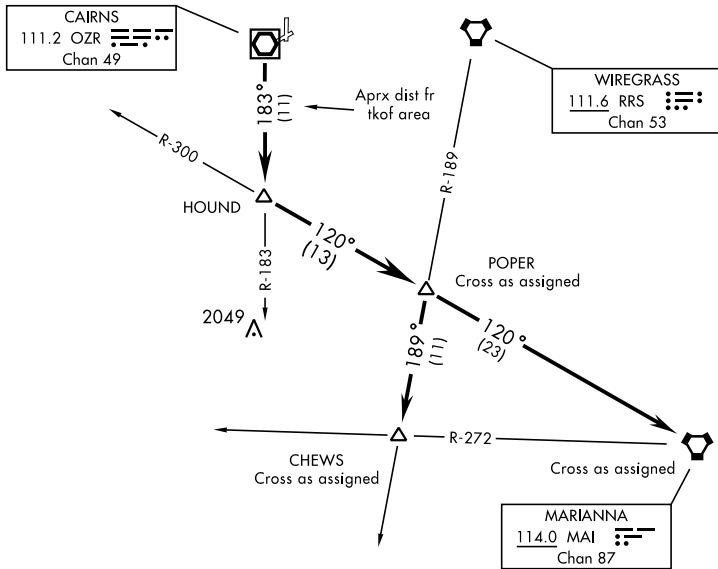


# POPER-ONE DEPARTURE (POPER1.POPER)

[USA]

610

ATIS 111.2 316.15  
 CLNC DEL ★  
 118.075 380.1  
 GND CON ★  
 121.9 288.25  
 TOWER ★  
 135.2 (CTAF) 248.55  
 DEP CON ★  
 133.75 270.35  
 JACKSONVILLE CENTER  
 134.3 322.55



SE-4, 28 NOV 2024 to 26 DEC 2024

SE-4, 28 NOV 2024 to 26 DEC 2024

## DEPARTURE ROUTE DESCRIPTION

TAKEOFF RWY 6, 18 or 36: Climbing right turn heading 205° ....

TAKEOFF RWY 24: Climbing left turn heading 120° ....

TAKEOFF PAD C OR G: Climb heading 178° to 1000, then right turn heading 205° ....

.... to intercept OZR VOR/DME R-183 to HOUND INT, and via MAI VORTAC R-300 to POPER INT. Thence via assigned Transition. Maintain 2000, expect clearance to requested altitude/flight level ten (10) minutes after departure.

CHEWS TRANSITION: (POPER 1.CHEWS) Proceed via RRS VORTAC R-189 to CHEWS INT.

MARIANNA TRANSITION: (POPER 1.MAI) Proceed via MAI R-300 to MAI VORTAC.

# POPER-ONE DEPARTURE (POPER1.POPER)