

RNAV (GPS) RWY 36

WAAS CH 63110 W36A	APCH CRS 004°	Rwy Idg TDZE Arprt Elev	5025 298 301
--	-------------------------	-------------------------------	---

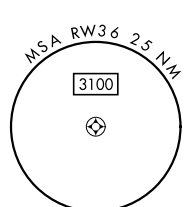
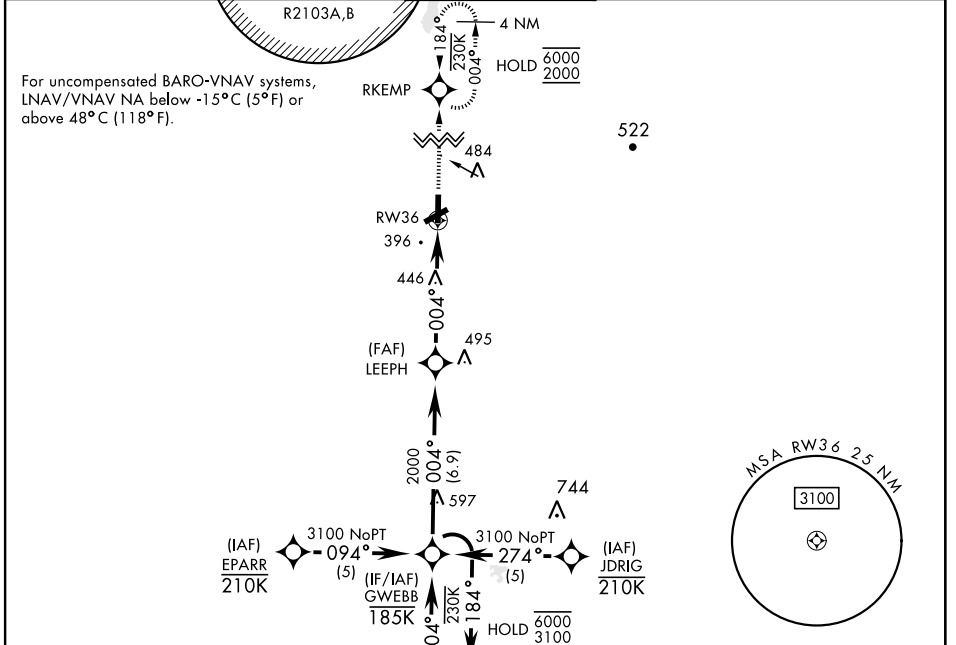
[USA]

CAIRNS AAF (KOZR)

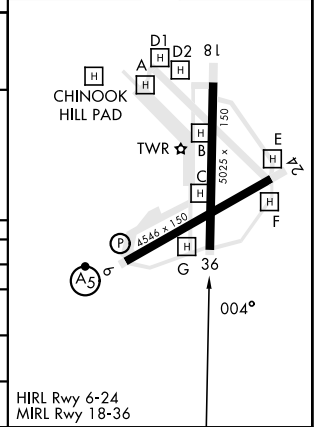
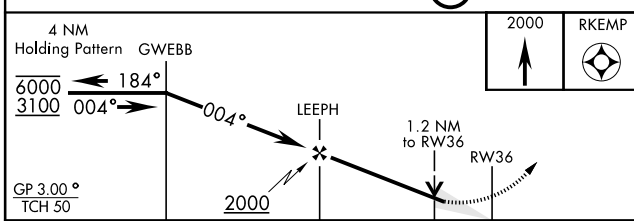
RNP APCH - GPS
 * Circling to rwy 24 NA at night.
 Visibility reduction by helicopters NA.

MISSED APPROACH: Climb to 2000 direct RKEMP and hold.

ATIS 111.2 316.15	APP CON ★ 021°-120° 125.4 327.125 121°-219° 133.75 270.35 220°-340° 133.45 239.275 341°-020° 121.1 319.25	TOWER ★ 135.2 (CTAF) 248.55	GND CON ★ 121.9 288.25	CLNC DEL ★ 118.075 380.1
---------------------------------------	---	---	--	--



ELEV	301	TDZE	298
------	-----	------	-----



CATEGORY	A	B	C	D
LPV DA	565-7 $\frac{1}{8}$		267	(300-7 $\frac{1}{8}$)
LNAV/VNAV DA	634-1		336	(400-1)
LNAV MDA	740-1	442 (500-1)	740-1 $\frac{1}{8}$	442 (500-1 $\frac{1}{8}$)
CIRCLING *	780-1 479 (500-1)	820-1 519 (600-1)	900-1 $\frac{1}{2}$ 599 (600-1 $\frac{1}{2}$)	900-2 599 (600-2)

HIRL Rwy 6-24
MIRL Rwy 18-36

RNAV (GPS) RWY 36

SE-4, 28 NOV 2024 to 26 DEC 2024

SE-4, 28 NOV 2024 to 26 DEC 2024