

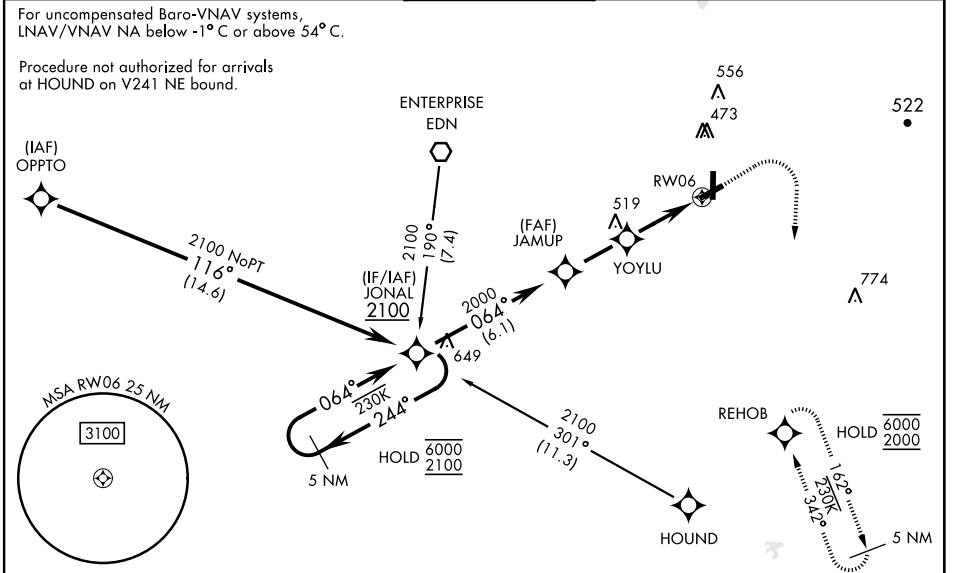
FORT NOVOSHEL, ALABAMA

RNAV (GPS) RWY 6

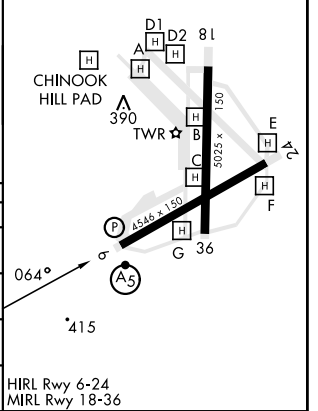
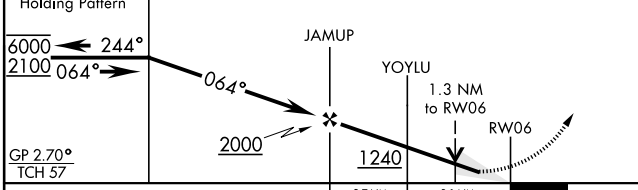
SBAS CH 50537 W06A	APCH CRS 064°	Rwy Idg TDZE Arprt Elev 4546 298 301	[USA]	CAIRNS AAF (KOZR)
--	-------------------------	--	-------	-------------------

RNP APCH - GPS	<p>▼ * When ALS inop, increase RVR to 40, vis to ¾ mile. ** When ALS inop, increase RVR to 45, vis to 7/8 mile. *** When ALS inop, increase CAT AB RVR to 55, vis to 1 mile; CAT CD vis to 1 ¼ miles. **** Circling not authorized to Rwy 24 at night. Circling visibility reduction by helicopters not authorized.</p>	MALS R (A5)	MISSED APPROACH: Climb to 900 then climbing right turn to 2000 direct REHOB and hold.
----------------	--	----------------	--

ATIS 111.2 316.15	APP CON ★ 021°-120° 125.4 327.125 121°-219° 133.75 270.35 220°-340° 133.45 239.275 341°-020° 121.1 319.25	TOWER ★ 135.2 (CTAF) 248.55	GND CON ★ 121.9 288.25	CLNC DEL★ 118.075 380.1
---------------------------------------	---	---	--	---



900	2000	REHOB	ELEV 301	TDZE 298
-----	------	-------	----------	----------



CATEGORY	A	B	C	D
LPV DA*	498/24	200	(200-½)	
LNAV/VNAV DA**	585/24	287	(300-½)	
LNAV MDA***	720/24 422 (500-½)	720/40 422 (500-¾)		
CIRCLING****	780-1 479 (500-1)	820-1 519 (600-1)	900-1½ 599 (600-1½)	900-2 599 (600-2)

FORT NOVOSHEL, ALABAMA 31° 17' N-85 °43' W CAIRNS AAF (KOZR)

Amdt 2 23MAR23

RNAV (GPS) RWY 6

SE-4, 28 NOV 2024 to 26 DEC 2024

SE-4, 28 NOV 2024 to 26 DEC 2024