

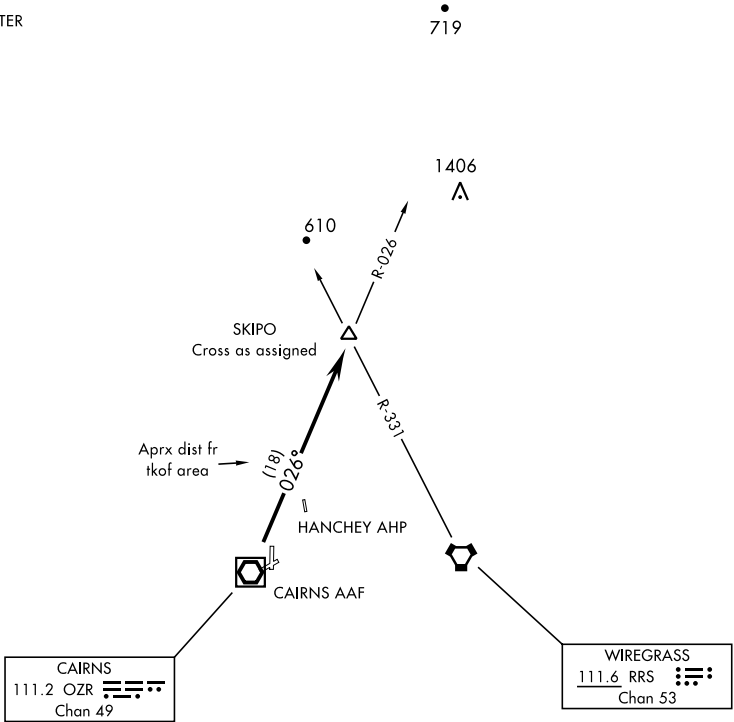
SKIPO-TWO DEPARTURE (SKIPO2.SKIPO)

CAIRNS AAF (KOZR)
FORT NOVOSEL, ALABAMA

RADAR required

ATIS 111.2 316.15
 CLNC DEL ★
 118.075 380.1
 GND CON ★
 121.9 288.25
 TOWER ★
 135.2 (CTAF) 248.55
 DEP CON ★
 125.4 327.125
 JACKSONVILLE CENTER
 134.3 322.55

[USA]



SE-4, 28 NOV 2024 to 26 DEC 2024

SE-4, 28 NOV 2024 to 26 DEC 2024

DEPARTURE ROUTE DESCRIPTION

- TAKEOFF RWY 6 or RWY 18: Climbing left turn heading 360°
- TAKEOFF RWY 24: Climbing right turn heading 050°
- TAKEOFF RWY 36: Climb heading 360°
- TAKEOFF FROM CENTER OF HELIPAD PAD D1: Climb heading 015°
- TAKEOFF FROM CENTER OF HELIPAD PAD D2: Climb heading 360°

Maintain 2000, expect clearance to requested altitude/flight level ten (10) minutes after departure.

.... Intercept OZR VOR/DME R-026 to SKIPO INT.

SKIPO-TWO DEPARTURE (SKIPO2.SKIPO)

FORT NOVOSEL, ALABAMA
CAIRNS AAF (KOZR)