

VOR RWY 24

CAIRNS AAF (KOZR)

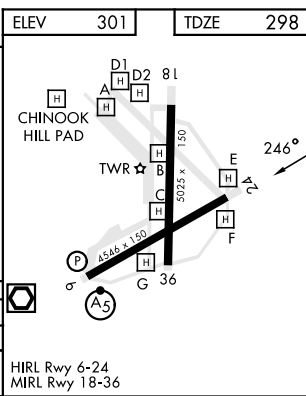
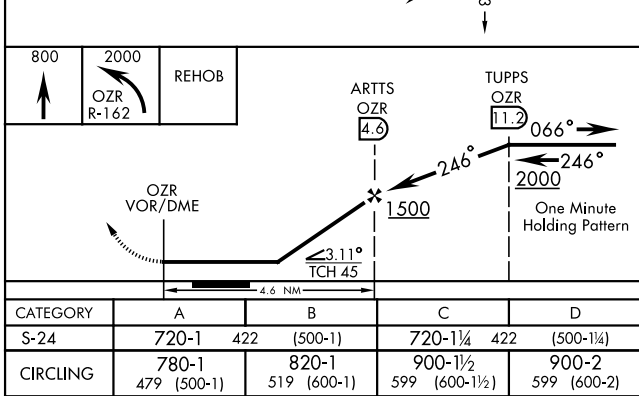
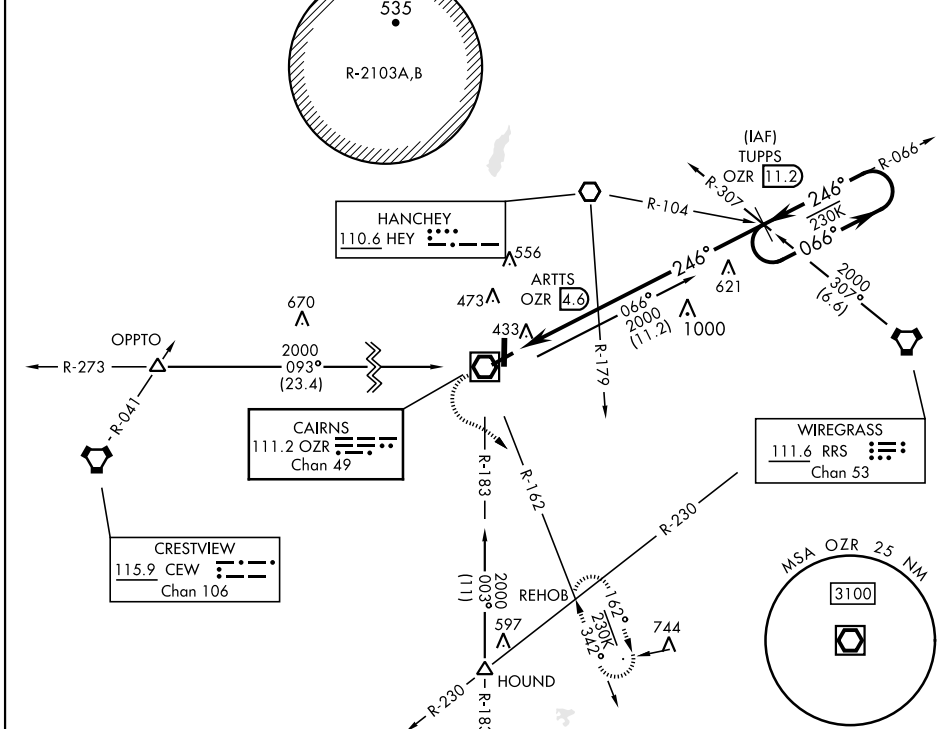
VOR/DME OZR 111.2 Chan 49	APCH CRS 246°	Rwy Idg TDZE Arprt Elev 4546 298 301
---	-------------------------	--

[USA]

Procedure NA at night.
Visibility reduction by helicopters NA.

MISSED APPROACH: Climb to 800 then climbing left turn to 2000 via OZR
VOR/DME R-162 to REHOB INT and hold; or when directed by ATC, climb to
800 then climbing right turn heading 290° to 2000 within 10 NM (RADAR required).

ATIS 111.2 316.15	APP CON ★ 021°-120° 125.4 327.125 121°-219° 133.75 270.35 220°-340° 133.45 239.275 341°-020° 121.1 319.25	TOWER ★ 135.2 (CTAF) 248.55	GND CON ★ 121.9 288.25	CLNC DEL ★ 118.075 380.1
---------------------------------------	---	---	--	--



ELEV	301	TDZE	298
------	-----	------	-----

FORT NOVOSHEL, ALABAMA 31° 17' N-85° 43' W CAIRNS AAF (KOZR)

VOR RWY 24

Amdt 13 13JUL23 SE-4, 28 NOV 2024 to 26 DEC 2024