

# VOR RWY 6

CAIRNS AAF (KOZR)

VOR/DME OZR <b>111.2</b> Chan <b>49</b>	APCH CRS <b>056°</b>	Rwy Idg TDZE Arprt Elev <b>4546</b> <b>298</b> <b>301</b>
---	-------------------------	--

[USA]

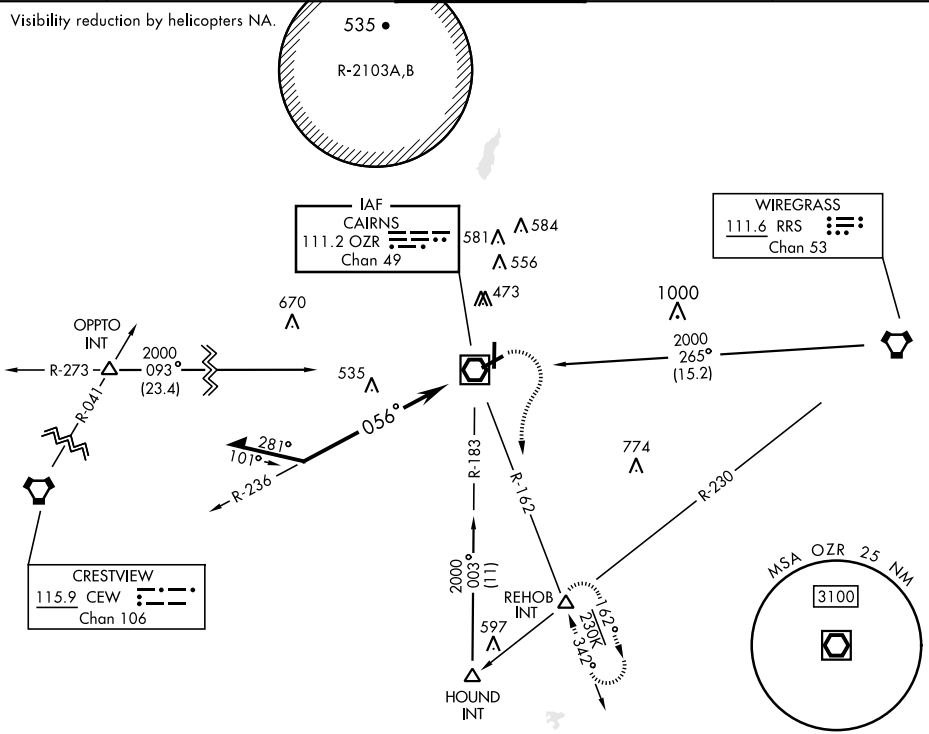
▼ \* When ALS inop, increase CAT AB RVR to 55, vis to 1 mile; CAT CD vis to 1½ miles.  
\*\* Circling to RWY 24 at night not authorized.



MISSED APPROACH: Climbing right turn to 2000 via OZR VOR/DME R-162 to REHOB INT and hold; or when directed by ATC, climbing left turn to 2000 heading 290° within 10 NM (RADAR required).

ATIS <b>111.2</b> <b>316.15</b>	APP CON ★ 021°-120° <b>125.4</b> <b>327.125</b> 121°-219° <b>133.75</b> <b>270.35</b> 220°-340° <b>133.45</b> <b>239.275</b> 341°-020° <b>121.1</b> <b>319.25</b>	TOWER ★ <b>135.2</b> (CTAF) <b>248.55</b>	GND CON ★ <b>121.9</b> <b>288.25</b>	CLNC DEL ★ <b>118.075</b> <b>380.1</b>
---------------------------------------	---	---	--	--

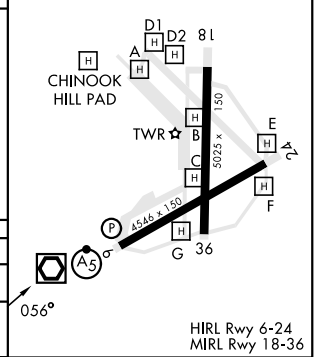
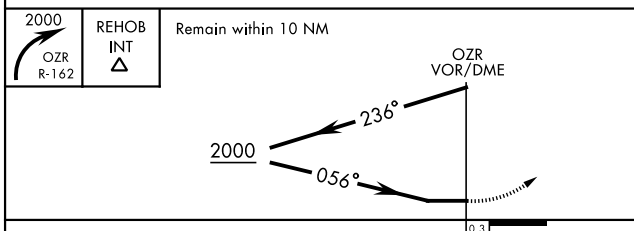
Visibility reduction by helicopters NA.



SE-4, 28 NOV 2024 to 26 DEC 2024

SE-4, 28 NOV 2024 to 26 DEC 2024

ELEV	301	TDZE	298
------	-----	------	-----



CATEGORY	A		B		C		D	
S-6 *	840/24	542	(600-½)		840/60	542	(600-1½)	
CIRCLING **	840-1	539	(600-1)		900-1½	599	(600-1½)	900-2
								599 (600-2)

# VOR RWY 6