

LOC I-CNW 110.7	APP CRS 174°	Rwy Idg TDZE Apt Elev	8600 470 470
---------------------------	------------------------	-----------------------------	---

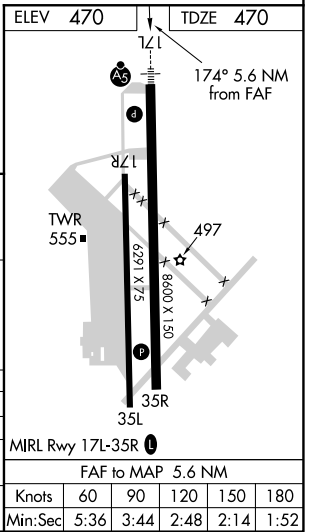
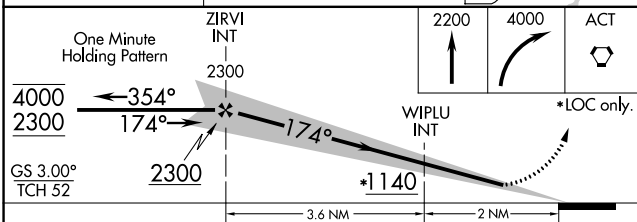
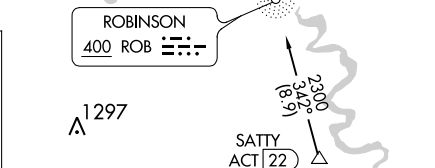
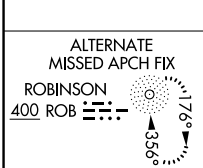
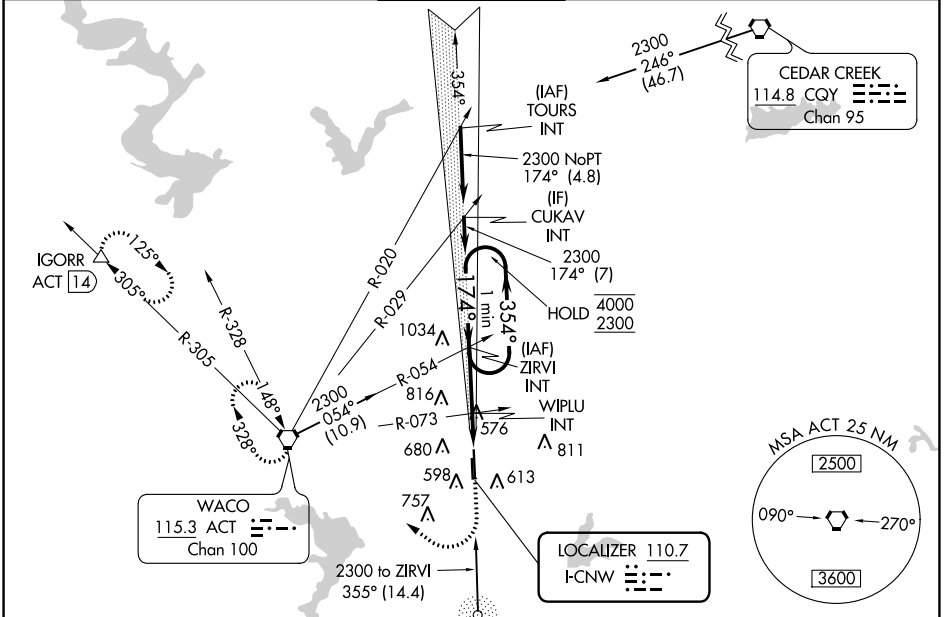
ILS or LOC RWY 17L

TSTC WACO (CNW)

NA For inop ALS, increase S-ILS 17L Cat E visibility to ¾ SM, and S-LOC 17L Cat E to 1½ SM.

MALSR
MISSED APPROACH: Climb to 2200 then climbing right turn to 4000 direct ACT VORTAC and hold.
(TACAN aircraft continue on ACT VORTAC R-305 to IGORR /ACT 14 DME and hold SE, RT, 305° inbound)

AWOS-3PT 134.225	WACO APP CON * 127.65 227.125	TSTC TOWER * 124.0 (CTAF) 255.7	GND CON 121.70	UNICOM 122.95
----------------------------	---	---	--------------------------	-------------------------



CATEGORY	A	B	C	D	E
S-ILS 17L	670-½ 200 (200-½)				
S-LOC 17L	860-½	390 (400-½)	860-⅝		390 (400-⅝)
CIRCLING	940-1 470 (500-1)	1040-1 570 (600-1)	1040-1½ 570 (600-1½)	1120-2 650 (700-2)	1180-2½ 710 (800-2½)

Knots	60	90	120	150	180
Min:Sec	5:36	3:44	2:48	2:14	1:52

SC-3, 28 NOV 2024 to 26 DEC 2024

SC-3, 28 NOV 2024 to 26 DEC 2024