

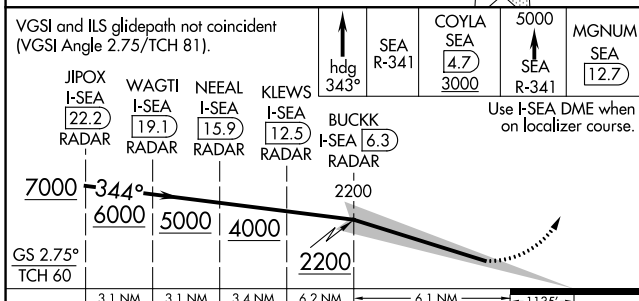
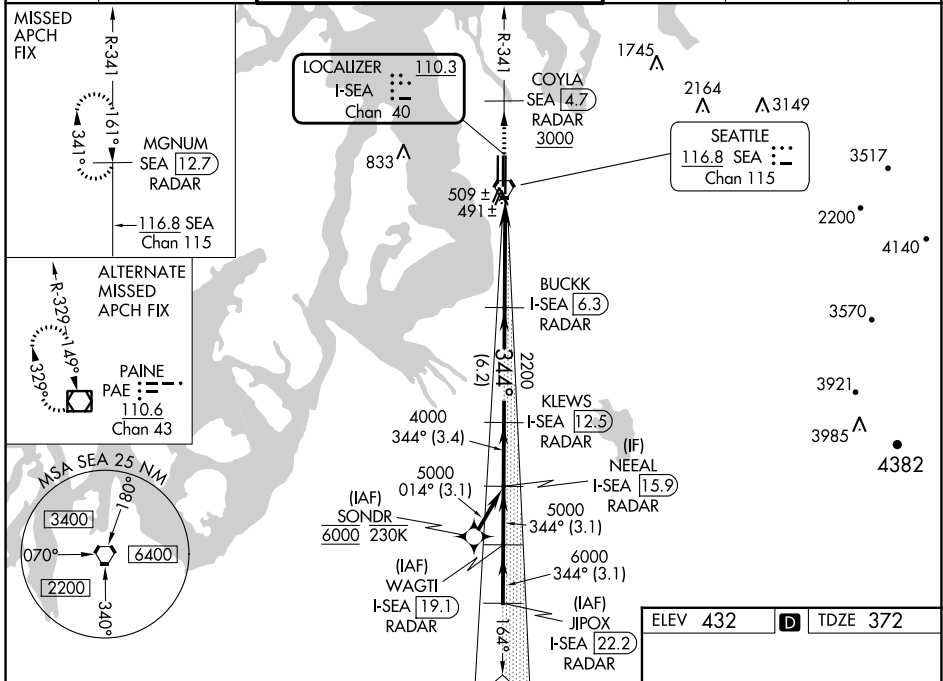
LOC/DME I-SEA 110.3 Chan 40	APP CRS 344°	Rwy Idg TDZE Apt Elev	11901 372 432
---	------------------------	-----------------------------	--

ILS RWY 34R (SA CAT I & II)

SEATTLE-TACOMA INTL (SEA)

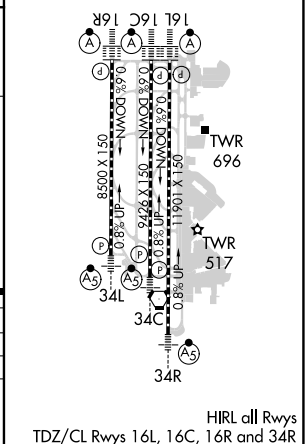
From SONDR: RNAV 1-GPS required. DME or RADAR required.		MALSR	MISSED APPROACH: Climb on heading 343° and outbound on SEA VORTAC R-341 to cross COYLA/SEA 4.7 DME/RADAR at or above 3000 then climb to 5000 on SEA VORTAC R-341 to MGNUM/SEA 12.7 DME/RADAR and hold, continue climb-in-hold to 5000.		
⚠ Simultaneous approach authorized with Rwy 34L. SA CAT I: Requires specific OPSPEC, MSPEC, or LOA approval and use of HUD to DH. SA CAT II: Reduced lighting: Requires specific OPSPEC, MSPEC, or LOA approval and use of autoland or HUD to touchdown.					

D-ATIS 118.0	SEATTLE APP CON 133.65 273.45	SEATTLE TOWER. 119.9 239.3 (Rwys 16L, 16C, 34C, 34R) 120.95 239.3 (Rwys 16R, 34L)	GND CON 121.7	CLNC DEL 128.0	CPDLC
------------------------	---	---	-------------------------	--------------------------	-------



CATEGORY	A	B	C	D
S-ILS 34R	SA CAT I	RA 250/14	150	DA 522
S-ILS 34R	SA CAT II	RA 200/12	100	DA 472

SA CATEGORY I & II ILS - SPECIAL AIRCREW & AIRCRAFT CERTIFICATION REQUIRED



NW-1, 28 NOV 2024 to 26 DEC 2024

NW-1, 28 NOV 2024 to 26 DEC 2024