

LOC/DME I-SEA 110.3 Chan 40	APP CRS 344°	Rwy Idg 34R 34C 11901 9426	TDZE 372 387	Apt Elev 432 432
---	------------------------	---	------------------------	----------------------------

ILS or LOC RWY 34R

SEATTLE-TACOMA INTL (SEA)

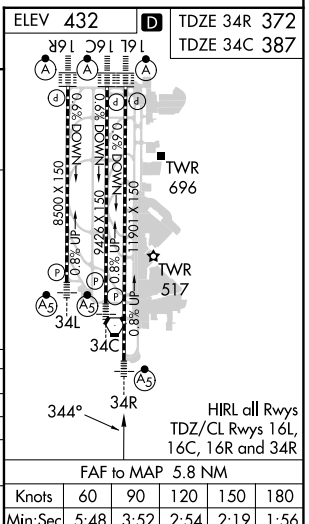
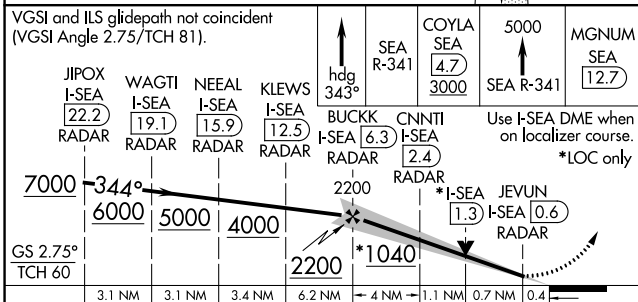
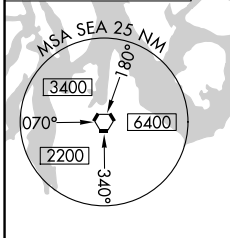
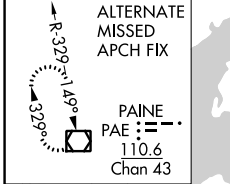
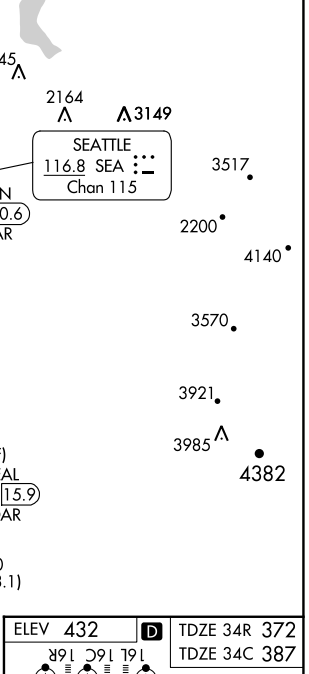
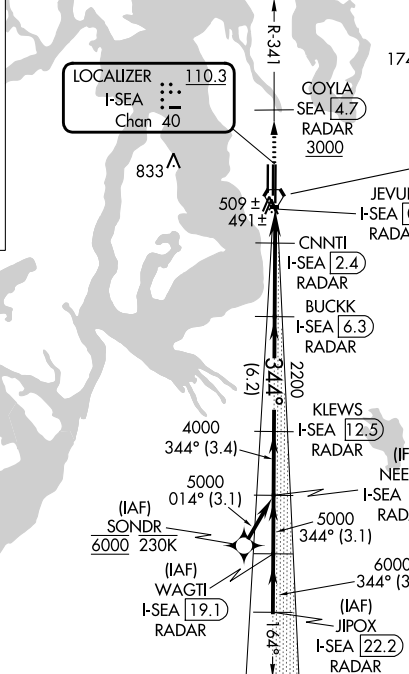
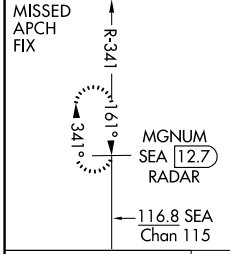
From SONDR: RNAV 1-GPS required.
DME or RADAR required.

⚠ Inop table does not apply to Sidestep 34C Cats A/B.
Simultaneous approach authorized with Rwy 34L.



MISSED APPROACH: Climb on heading 343° and outbound on SEA VORTAC R-341 to cross COYLA/SEA 4.7 DME/RADAR at or above 3000 then climb to 5000 on SEA VORTAC R-341 to MGNM/SEA 12.7 DME/RADAR and hold, continue climb-in-hold to 5000.

D-ATIS 118.0	SEATTLE APP CON 133.65 273.45	SEATTLE TOWER 119.9 239.3 (Rwys 16L, 16C, 34C, 34R) 120.95 239.3 (Rwys 16R, 34L)	GND CON 121.7	CLNC DEL 128.0	CPDLC
------------------------	---	--	-------------------------	--------------------------	-------



GS 2.75° TCH 60	3.1 NM	3.1 NM	3.4 NM	6.2 NM	4 NM	1.1 NM	0.7 NM	0.4
CATEGORY	A		B		C		D	
S-ILS 34R	572/18 200 (200-½)							
S-LOC 34R	740/24		368 (400-½)		740/35		368 (400-¾)	
SIDESTEP 34C	760/55 373 (400-1)				760-1½ 373 (400-1½)			
Ⓢ CIRCLING	1000-1 568 (600-1)		1000-1½ 568 (600-1½)		1000-2 568 (600-2)			

NW-1, 28 NOV 2024 to 26 DEC 2024

NW-1, 28 NOV 2024 to 26 DEC 2024