

WAAS CH 61010 W16B	APP CRS 164°	Rwy Idg 9426 TDZE 430 Apt Elev 433
--	------------------------	---

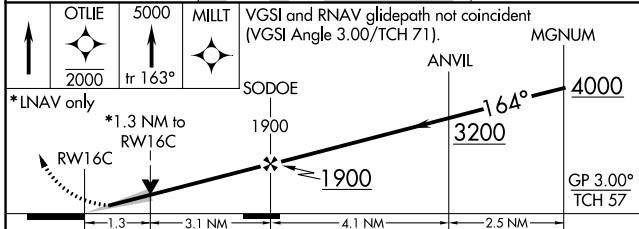
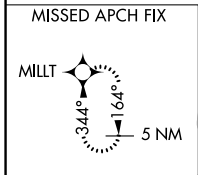
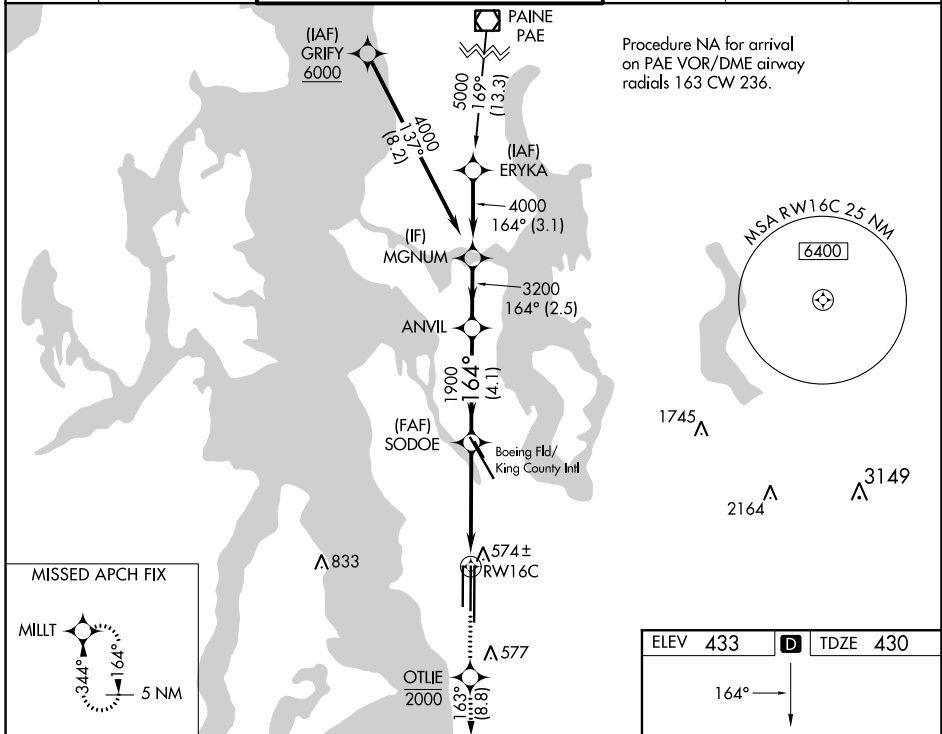
RNAV (GPS) Y RWY 16C

SEATTLE-TACOMA INTL (SEA)

▼ For uncompensated Baro-VNAV systems, LNAV/VNAV NA below -6°C (22°F) or above 54°C (130°F). DME/DME RNP-0.3 NA. For inop ALS, increase LNAV Cats C/D visibility to 1½. See additional requirements on adjacent information page.

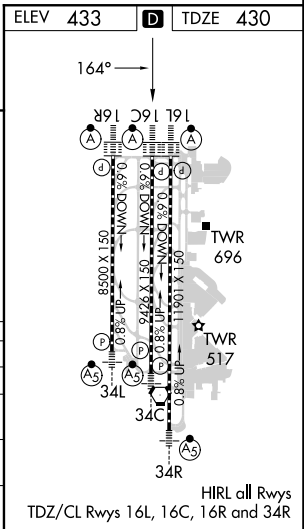
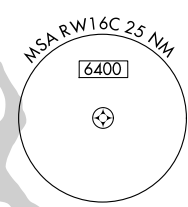
ALSF-2
MISSED APPROACH: Climb direct OTLIE to cross OTLIE at or below 2000, then climb to 5000 on track 163° to MILLT and hold, continue climb-in-hold to 5000.

D-ATIS 118.0	SEATTLE APP CON 133.65 273.45	SEATTLE TOWER 119.9 239.3 (Rwys 16L, 16C, 34C, 34R) 120.95 239.3 (Rwys 16R, 34L)	GND CON 121.7	CLNC DEL 128.0	CPDLC
------------------------	---	--	-------------------------	--------------------------	-------



CATEGORY	A	B	C	D
LPV DA		630/18	200 (200-½)	
LNAV/VNAV DA		840/44	410 (500-¾)	
LNAV MDA	920/24	490 (500-½)	920/50	490 (500-1)
C CIRCLING	1000-1	567 (600-1)	1000-1½ 567 (600-1½)	1000-2 567 (600-2)

Procedure NA for arrival on PAE VOR/DME airway radials 163 CW 236.



NW-1, 28 NOV 2024 to 26 DEC 2024

NW-1, 28 NOV 2024 to 26 DEC 2024

SEATTLE-TACOMA INTL AIRPORT

ALERT NOTICE

ATTENTION ALL AIRCRAFT LANDING TO THE SOUTH:

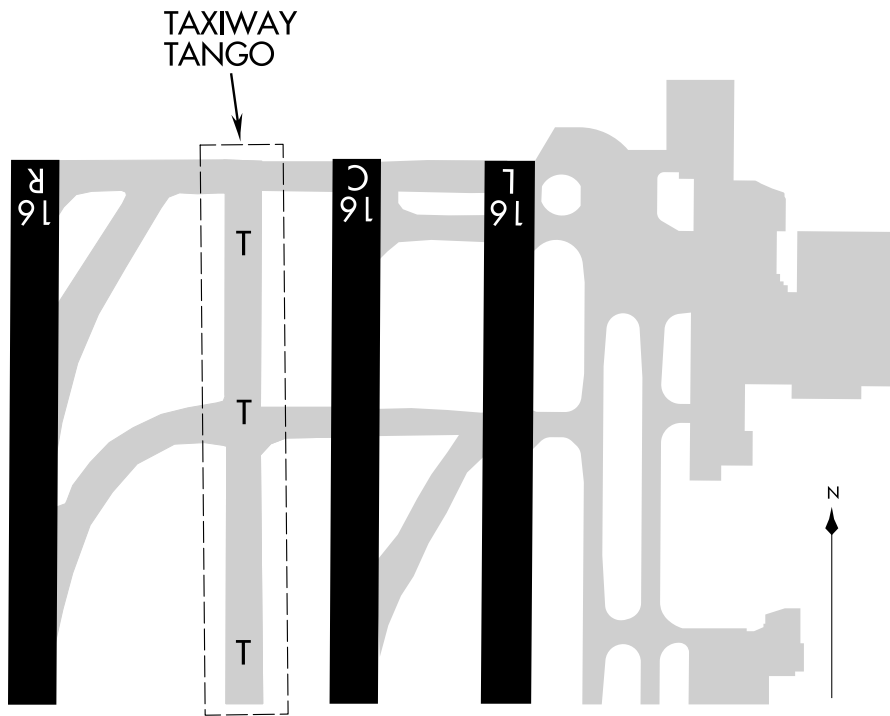
When transitioning from an instrument procedure to a visual approach to Runway 16C, verify you are aligned for the intended landing Runway, not Taxiway Tango. Taxiway Tango is west and parallel to Runway 16C.

TRANSITION TO VISUAL:

Taxiway Tango has been mistaken for Runway 16C from the air during certain visibility conditions, i.e., wet runway, low sun angle reflections. Aircrews are advised to be aware of the proximity of the taxiway to Runway 16C and its runway-like appearance while on approach.

RECOMMENDATION:

Aircrews should use visual cues, e.g., approach lighting systems, REILs, when available, to confirm alignment with Runway 16C not Taxiway Tango. Additionally, it is recommended when executing a segment of the ILS approach for a visual transition, track the localizer until the runway environment is visually verified.



NW-1, 28 NOV 2024 to 26 DEC 2024

NW-1, 28 NOV 2024 to 26 DEC 2024