

(SEA8.SEA) 23334

# SEATTLE EIGHT DEPARTURE

AL-582 (FAA)

SEATTLE-TACOMA INTL (SEA)

SEATTLE, WASHINGTON

D-ATIS  
118.0  
CLNC DEL  
128.0  
CPDLC  
SEATTLE DEP CON  
119.2 284.7

**TOP ALTITUDE:  
ASSIGNED BY ATC**

RADAR required.

VANCOUVER  
115.9 YVR

WHATCOM  
113.0 HUH

PRINCETON  
113.9 YDC

VICTORIA  
113.7 YYJ

PAINE  
110.6 PAE

EPHRATA  
112.6 EPH

TATOOSH  
112.2 TOU

SEATTLE  
116.8 SEA

ELLENSBURG  
117.9 ELN

HOQUIAM  
117.7 HQM

OLYMPIA  
113.4 OLM

BATTLE GROUND  
116.6 BTG

YAKIMA  
116.0 YKM

ASTORIA  
114.0 AST

NEWBERG  
117.4 UBG

EUGENE  
112.9 EUG

NOTE: Between the hours of 2200 and 0600 local, large turbine powered aircraft departing Rwy 34L/C/R will be vectored over Puget Sound for noise abatement before proceeding on course.

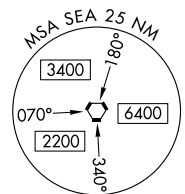
### TAKEOFF MINIMUMS

Rwys 16C, 34L, 34C, 34R: Standard.

Rwy 16L: 300-1 or standard with minimum climb of 425' per NM to 600.

Rwy 16R: 300-1¼ or standard with minimum climb of 215' per NM to 600.

NOTE: Chart not to scale.



### DEPARTURE ROUTE DESCRIPTION

TAKEOFF RUNWAY 16L: Climb heading 165° and on SEA R-161, thence. . .

TAKEOFF RUNWAY 16C: Climb heading 163° and on SEA R-161, thence. . .

TAKEOFF RUNWAY 16R: Climb heading 158° and on SEA R-161, thence. . .

TAKEOFF RUNWAY 34L: Climb heading 350° and on SEA R-341, thence. . .

TAKEOFF RUNWAY 34C: Climb heading 345° and on SEA R-341, thence. . .

TAKEOFF RUNWAY 34R: Climb heading 341° and on SEA R-341, thence. . .

. . . maintain assigned altitude, expect RADAR vectors to assigned route.

# SEATTLE EIGHT DEPARTURE

(SEA8.SEA) 19MAY22

SEATTLE, WASHINGTON

SEATTLE-TACOMA INTL (SEA)

NW-1, 28 NOV 2024 to 26 DEC 2024

NW-1, 28 NOV 2024 to 26 DEC 2024