

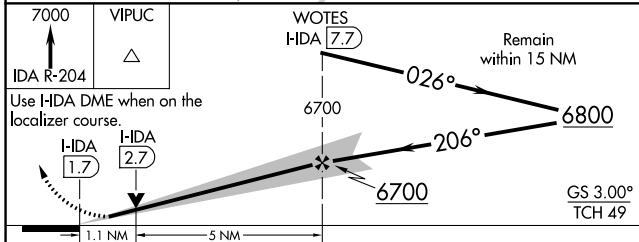
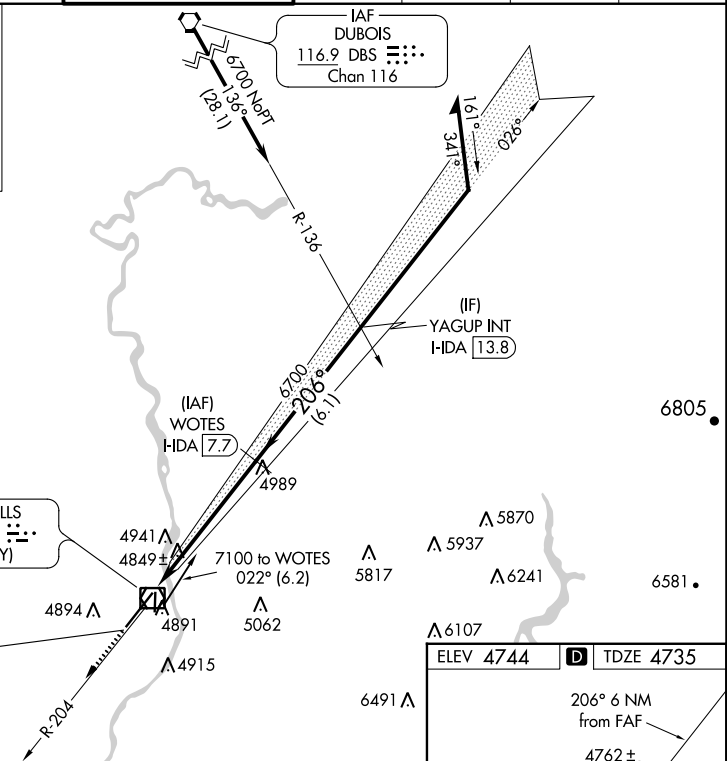
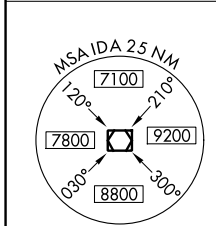
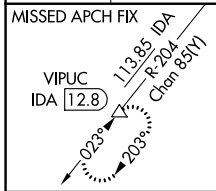
LOC/DME I-HDA 111.1 Chan 48	APP CRS 206°	Rwy Idg TDZE Apt Elev	9002 4735 4744
-------------------------------------------------	------------------------	-----------------------------	-------------------------------------------

ILS or LOC RWY 21

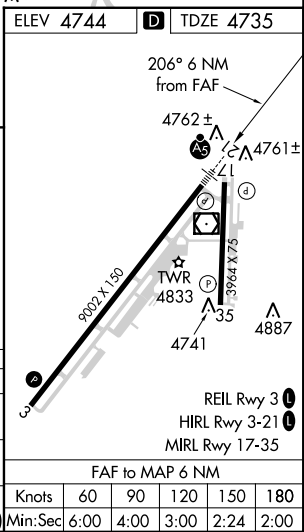
IDAHO FALLS RGNL (IDA)

DME required.	MALSR	MISSED APPROACH: Climb to 7000 on IDA VOR/DME R-204 to VIPUC/12.8 DME and hold.
<p>▼ Circling to Rwy 35 NA at night. For inop ALS, increase S-ILS 21 Cat E visibility to RVR 4000, and S-LOC 21 Cat E visibility to RVR 6000.</p> <p>▲</p>		

ATIS 135.325	SALT LAKE CENTER 128.35 239.25	IDAHO FALLS TOWER * 118.5 (CTAF) 0 257.8	GND CON 121.7	CLNC DEL 121.7	GCO 121.725	UNICOM 122.95
------------------------	------------------------------------------	----------------------------------------------------	-------------------------	--------------------------	-----------------------	-------------------------



CATEGORY	A	B	C	D	E
S-ILS 21	4985/24		250 (300-½)		
S-LOC 21	5120/24	385 (400-½)		5120/35 385 (400-¾)	
CIRCLING	5200-1 456 (500-1)	5300-1 556 (600-1)	5400-1¾ 656 (700-1¾)	5420-2¼ 676 (700-2¼)	5420-2½ 676 (700-2½)



NW-1, 28 NOV 2024 to 26 DEC 2024

NW-1, 28 NOV 2024 to 26 DEC 2024

	Knots	60	90	120	150	180
	Min:Sec	6:00	4:00	3:00	2:24	2:00