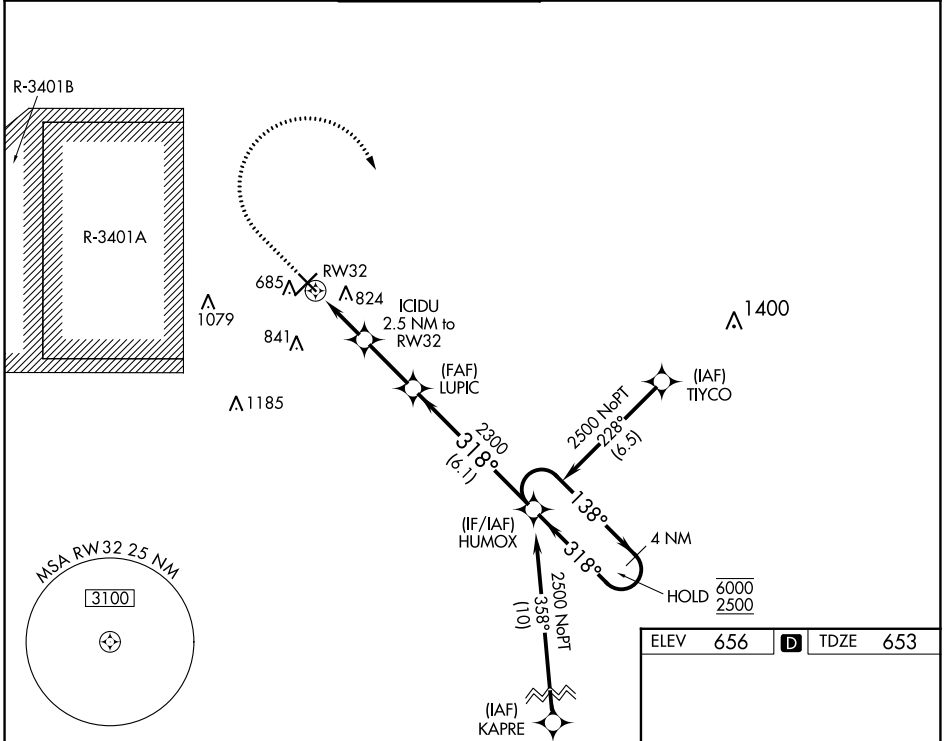


WAAS CH 50399 W32A	APP CRS 318°	Rwy Idg TDZE 653 Apt Elev 656	5000
----------------------------------------	------------------------	---------------------------------------------------	-------------

RNAV (GPS) RWY 32

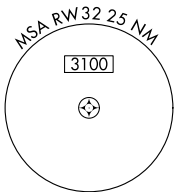
COLUMBUS MUNI (BAK)

RNP APCH - GPS.		MISSED APPROACH: Climb to 1300, then climbing right turn to 2500 direct HUMOX and hold.					
<p>▼ Rwy 32 helicopter visibility reduction below 3/4 SM NA. For uncompensated Baro-VNAV systems, LNAV/VNAV NA below -16°C or above 54°C.</p> <p>▲</p>		AWOS-3 119.75	INDIANAPOLIS APP CON 134.85 317.8	COLUMBUS TOWER ★ 118.6 (CTAF) 0	GND CON 121.6	CLNC DEL 134.85 (When twr closed)	UNICOM 122.95

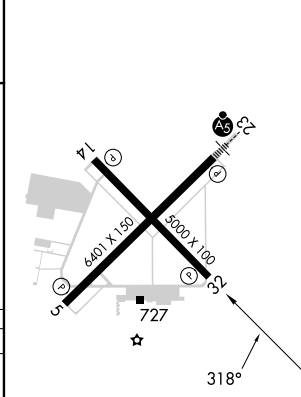
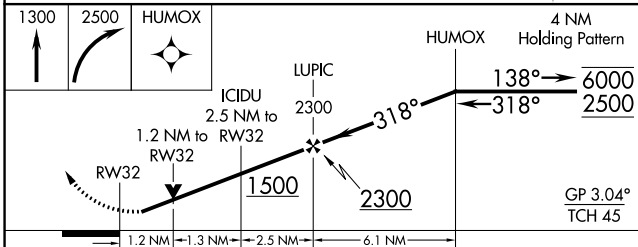


EC-2, 28 NOV 2024 to 26 DEC 2024

EC-2, 28 NOV 2024 to 26 DEC 2024



ELEV	656	D	TDZE	653
------	-----	----------	------	-----



CATEGORY	A	B	C	D
LPV DA		903-1	250 (300-1)	
LNAV/VNAV DA		1056-1 1/8	403 (400-1 1/8)	
LNAV MDA	1080-1	427 (500-1)	1080-1 1/4	427 (500-1 1/4)

MIRL Rwy 14-32 **1**
 HIRL Rwy 5-23 **1**
 REIL Rws 5, 14, and 32 **1**