

LOC I-PIA <b>109.9</b>	APP CRS <b>309°</b>	Rwy ldg <b>10104</b>
		TDZE <b>650</b>
		Apt Elev <b>661</b>

# ILS or LOC RWY 31

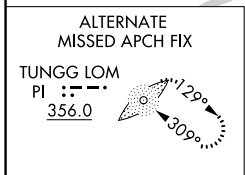
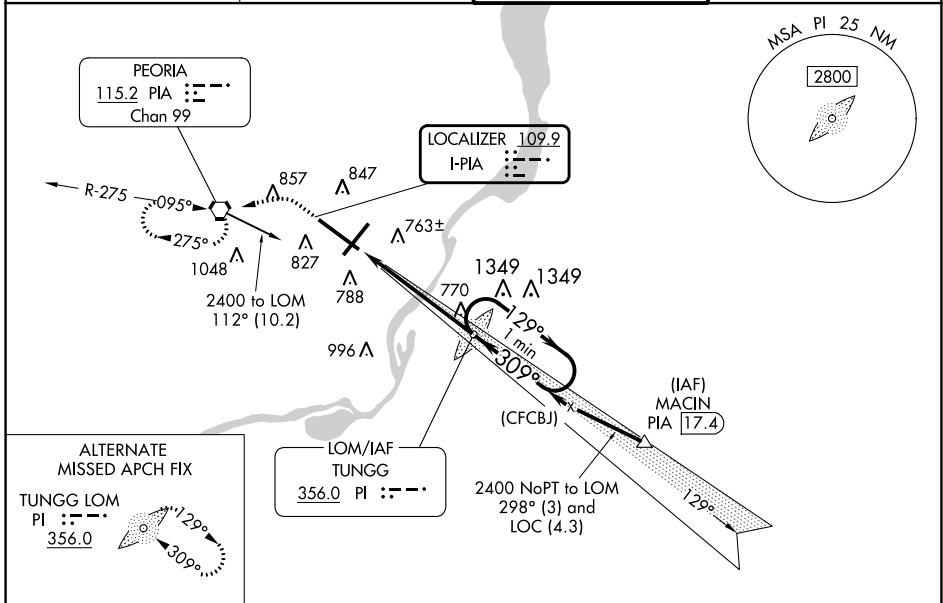
GENERAL DOWNING-PEORIA INTL (PIA)

**⚠** When local altimeter setting not received, use Lincoln altimeter setting and increase S-ILS 31 DA to 939 feet; increase all MDAs 100 feet; and Circling visibility Cat C/D ½ SM. For inop ALS, when using Lincoln altimeter setting increase ILS-31 all Cats visibility to RVR 4500.  
 \* RVR 1800 authorized with the use of FD or AP or HUD to DA.



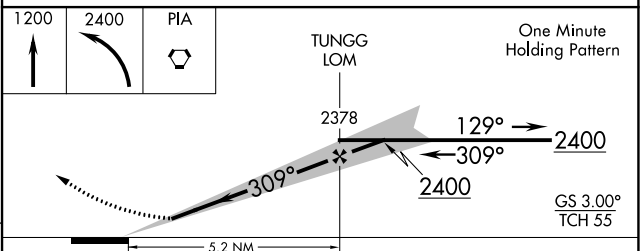
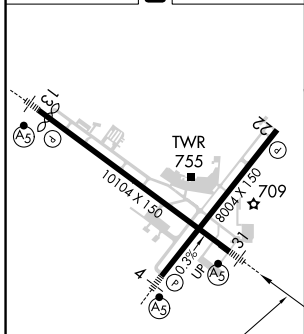
**MISSED APPROACH:** Climb to 1200 then climbing left turn to 2400 direct PIA VORTAC and hold, continue climb-in-hold to 2400.

ATIS <b>126.1 282.2</b>	SAINT LOUIS APP CON <b>125.8 269.2</b>	PEORIA TOWER <b>124.0 353.85</b>	GND CON <b>121.85 348.6</b>
----------------------------	---	-------------------------------------	--------------------------------



LOM/IAF  
TUNGG  
356.0 PIA ::-::

ELEV 661	<b>D</b>	TDZE 650
----------	----------	----------



CATEGORY	A	B	C	D
S-ILS 31 *	850/24 200 (200-½)			
S-LOC 31	1200/24	550 (600-½)	1200/60	550 (600-1¼)
<b>C</b> CIRCLING	1200-1	539 (600-1)	1200-1½ 539 (600-1½)	1400-2¼ 739 (800-2¼)

HIRL Rwy's 4-22 and 13-31

FAF to MAP 5.2 NM

Knots	60	90	120	150	180
Min:Sec	5:12	3:28	2:36	2:05	1:44

EC-3, 28 NOV 2024 to 26 DEC 2024

EC-3, 28 NOV 2024 to 26 DEC 2024