

MILTON, FLORIDA

# ILS Y or LOC Y RWY 14

LOC/DME I-NSE <b>111.75</b> Chan <b>54(Y)</b>	APCH CRS <b>139°</b>	Rwy Ildg TDZE Arprt Elev <b>6001</b> <b>199</b> <b>199</b>
---	-------------------------	---

[USN]

WHITING FLD NAS - NORTH (KNSE)

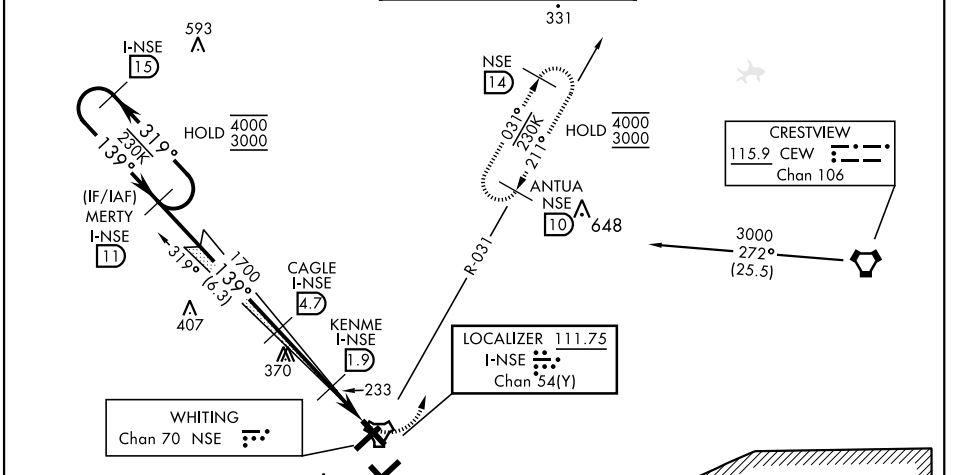
TACAN and DME required.

\* When ALS inop, increase vis to 3/4 mile.  
 \*\* When ALS inop, increase vis to 1 mile.  
 \*\*\* Circling not authorized S of Rwy 5 and 32.

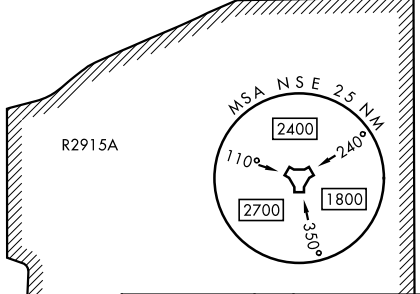


MISSED APPROACH: Climb to 700. Then climbing left turn to 3000. Intercept NSE TACAN R-031 to ANTUA and hold. Continue climb in hold. Contact Pensacola APP CON.

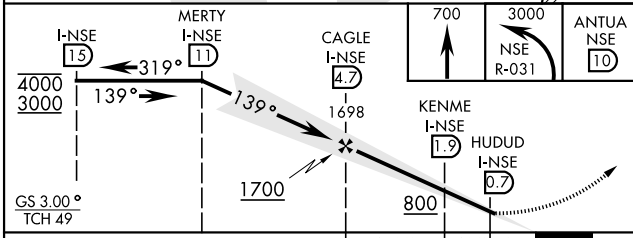
ATIS * <b>290.325</b>	PENSACOLA APP CON <b>127.35 278.8</b>	NORTH WHITING TOWER * <b>121.4 306.925</b>	GND CON <b>251.15</b>	CLNC DEL <b>257.775</b>	ASR
--------------------------	--	---	--------------------------	----------------------------	-----



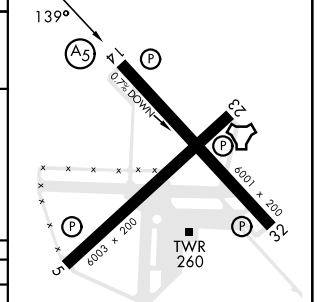
- CAUTION:
- Intensive VFR student training all quadrants.
  - Whiting Fld NAS - South located 1 NM S.



EMERG SAFE ALT 100 NM 3500



ELEV	199	TDZE	199
------	-----	------	-----



CATEGORY	A	B	C	D
S-ILS 14 *	399-1/2	200	(200-1/2)	
S-LOC 14 **	500-1/2	301	(400-1/2)	
*** CIRCLING	560-1 361 (400-1)	660-1 461 (500-1)	660-1 1/2 461 (500-1 1/2)	760-2 561 (600-2)

HIRL all rwys

MILTON, FLORIDA  
Amdt 6 18APR24

30° 43' N-87° 01' W

WHITING FLD NAS - NORTH (KNSE)

# ILS Y or LOC Y RWY 14

SE-3, 28 NOV 2024 to 26 DEC 2024

SE-3, 28 NOV 2024 to 26 DEC 2024