

# RNAV (GPS) RWY 23

APCH CRS <b>229°</b>	Rwy Idg <b>6003</b>
	TDZE <b>183</b>
	Arprt Elev <b>199</b>

[USN]

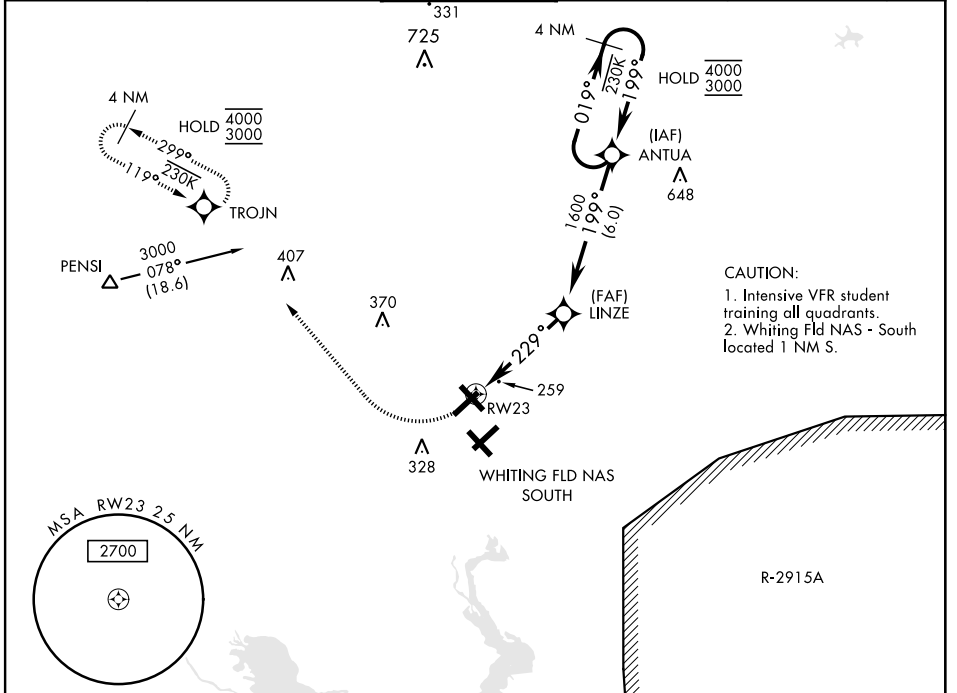
WHITING FLD NAS - NORTH (KNSE)

RNP APCH

\* Circling not authorized S of Rwy 5 and 32.

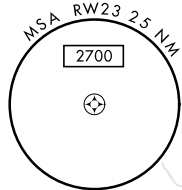
MISSED APPROACH: Climb to 700, then climbing right turn to 3000 direct TROJN and hold. Continue climb in hold. Contact Pensacola APP CON.

ATIS ★ <b>290.325</b>	PENSACOLA APP CON <b>127.35 278.8</b>	<b>NORTH WHITING TOWER ★</b> <b>121.4 306.925</b>	GND CON <b>251.15</b>	CLNC DEL <b>257.775</b>	ASR
--------------------------	--	--	--------------------------	----------------------------	-----



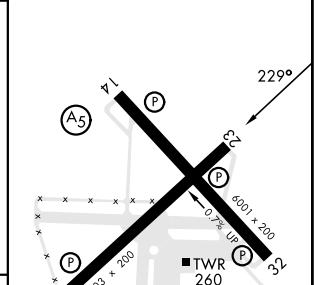
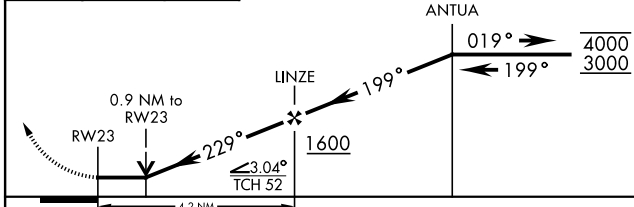
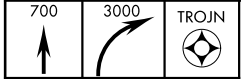
CAUTION:

- Intensive VFR student training all quadrants.
- Whiting Fld NAS - South located 1 NM S.



EMERG SAFE ALT 100 NM 3500

ELEV 199	TDZE 183
----------	----------



CATEGORY	A	B	C	D
LNVA MDA	520-1	337	(400-1)	
CIRCLING*	560-1 361 (400-1)	660-1 461 (500-1)	660-1½ 461 (500-1½)	760-2 561 (600-2)

HIRL all rwys

SE-3, 28 NOV 2024 to 26 DEC 2024

SE-3, 28 NOV 2024 to 26 DEC 2024