

# TACAN RWY 14

TACAN NSE Chan <b>70</b>	APCH CRS <b>127°</b>	Rwy Ldg TDZE Arprt Elev <b>6001</b> <b>199</b> <b>199</b>
-----------------------------	-------------------------	--

[USN]

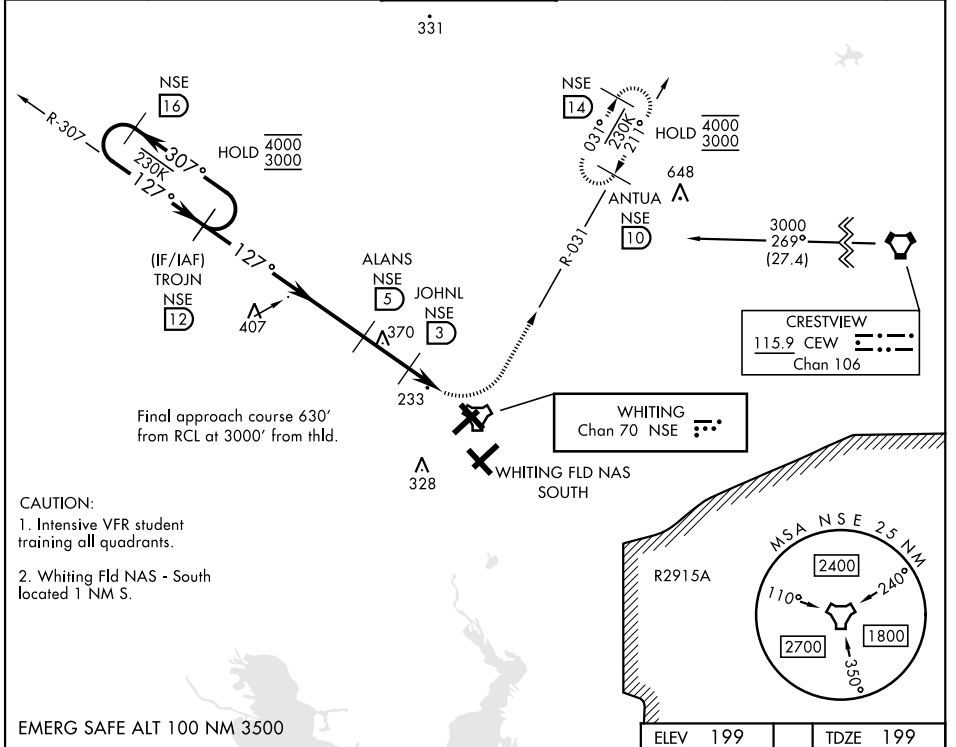
WHITING FLD NAS - NORTH (KNSE)

▼ \* Circling not authorized S of Rwy 5 and 32.

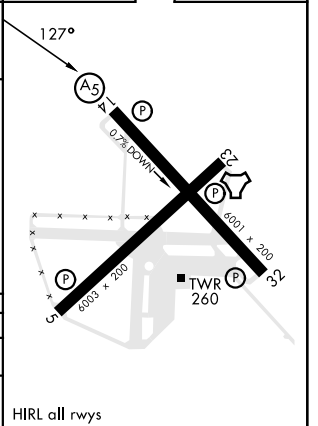
MALS R (A5)

MISSED APPROACH: Climb to 600, then climbing left turn to 3000, intercept NSE TACAN R-031 to ANTUA and hold. Continue climb in hold. Contact Pensacola APP CON.

ATIS ★ <b>290.325</b>	PENSACOLA APP CON <b>127.35 278.8</b>	NORTH WHITING TOWER ★ <b>121.4 306.925</b>	GND CON <b>251.15</b>	CLNC DEL <b>257.775</b>	ASR
--------------------------	--	--	--------------------------	----------------------------	-----



	600		3000		ANTUA NSE 10	
	TROJN R-307		ALANS 5		JOHN L 3	
	4000 3000		1700		LUZZE 1.2	
	307°		127°		1000	
	127°		3.14° TCH 51		2 NM	
	2 NM		1.8 NM		TACAN	
CATEGORY	A	B	C	D		
S-14		500 - 1	301	(400 - 1)		
CIRCLING*	560-1 361 (400-1)	660-1 461 (500-1)	660-1½ 461 (500-1½)	760-2 561 (600-2)	HIRL all rwy's	



SE-3, 28 NOV 2024 to 26 DEC 2024

SE-3, 28 NOV 2024 to 26 DEC 2024

# TACAN RWY 14