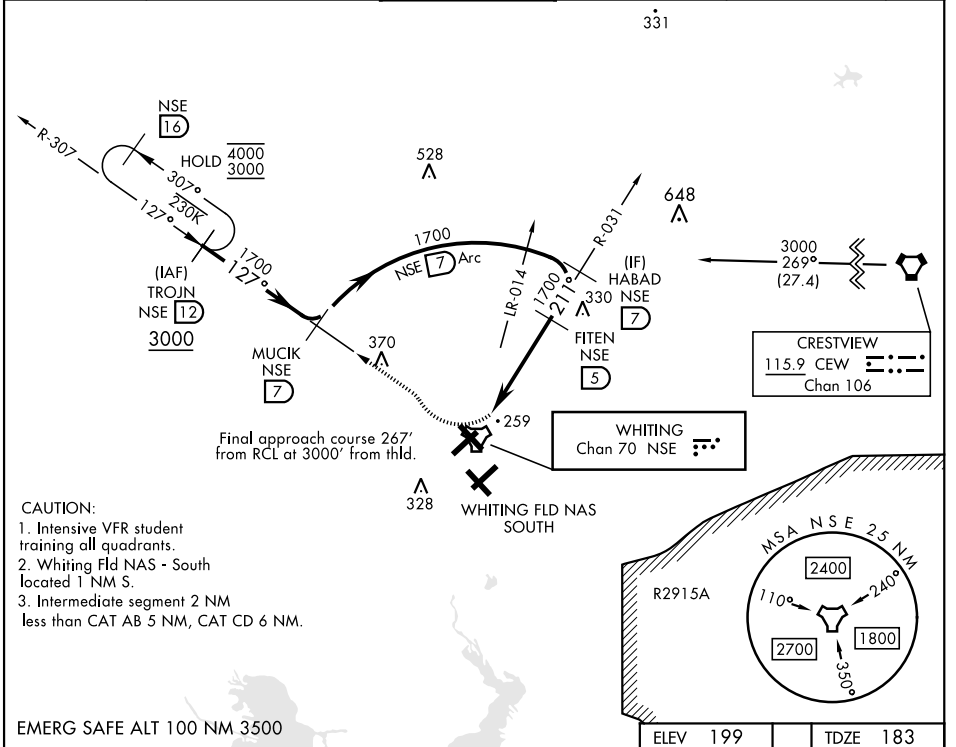


# TACAN RWY 23

TACAN NSE Chan <b>70</b>	APCH CRS <b>211°</b>	Rwy Ldg TDZE <b>6003</b> <b>183</b> Arprt Elev <b>199</b>	[USN]	WHITING FLD NAS - NORTH (KNSE)
-----------------------------	-------------------------	---	-------	--------------------------------

▽ \*Circling not authorized S of Rwy 5 and 32.  
 MISSED APPROACH: Climb to 600. Then climbing right turn to 3000. Intercept NSE TACAN R-307 to TROJN and hold. Continue climb in hold. Contact Pensacola APP CON.

ATIS ★ <b>290.325</b>	PENSACOLA APP CON <b>127.35 278.8</b>	NORTH WHITING TOWER ★ <b>121.4 306.925</b>	GND CON <b>251.15</b>	CLNC DEL <b>257.775</b>	ASR
--------------------------	--	---	--------------------------	----------------------------	-----

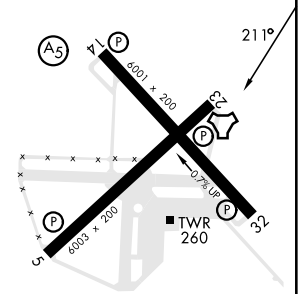
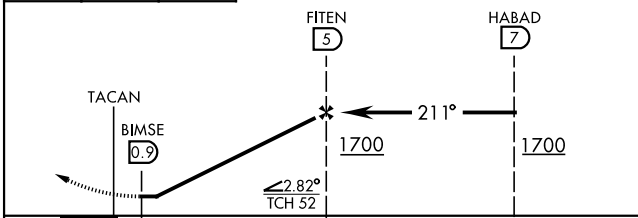
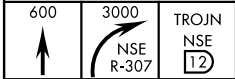


**CAUTION:**

- Intensive VFR student training all quadrants.
- Whiting Fld NAS - South located 1 NM S.
- Intermediate segment 2 NM less than CAT AB 5 NM, CAT CD 6 NM.

EMERG SAFE ALT 100 NM 3500

ELEV 199	TDZE 183
----------	----------



CATEGORY	A	B	C	D
S-23	520-1	337	(400-1)	
CIRCLING*	560-1 361 (400-1)	660-1 461 (500-1)	660-1½ 461 (500-1½)	760-2 561 (600-2)

HIRL all rwys

# TACAN RWY 23

SE-3, 28 NOV 2024 TO 26 DEC 2024

SE-3, 28 NOV 2024 TO 26 DEC 2024