

WAAS CH 93808 W35A	APP CRS 355°	Rwy Idg 7201 TDZE 1008 Apt Elev 1009
--	------------------------	---

RNAV (GPS) RWY 35

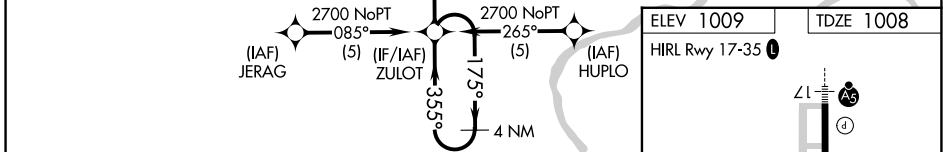
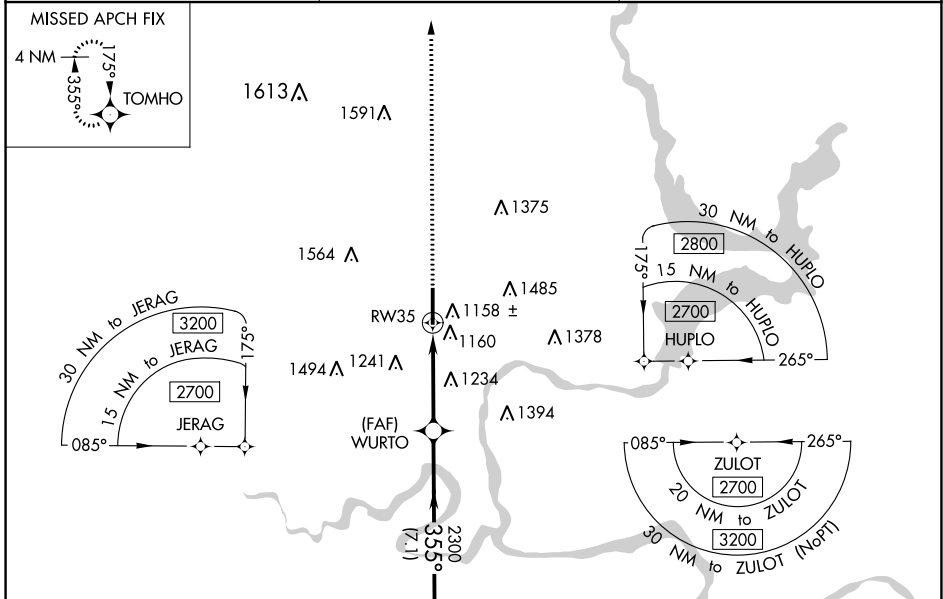
PONCA CITY RGNL (PNC)

⚠ For uncompensated Baro-VNAV systems, LNAV/VNAV NA below -17°C (2°F) or above 46°C (114°F). DME/DME RNP-0.3 NA. When local altimeter setting not received use Winfield-Arkansas City altimeter setting and increase LPV DA to 1377 feet, LNAV/VNAV DA to 1560 feet and all MDA 100 feet; increase LPV all Cats, LNAV/VNAV all Cats, LNAV Cats C and D and Circling Cats C and D visibility ¼ SM. Baro-VNAV NA when using Winfield-Arkansas City altimeter setting. Visibility reduction by helicopters NA.

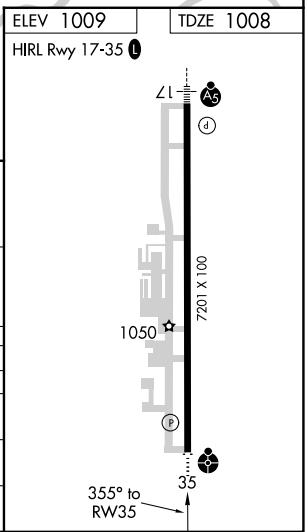
ODALS

MISSED APPROACH:
Climb to 2800 direct TOMHO and hold.

ASOS 134.075	KANSAS CITY CENTER 127.8 319.1	UNICOM 123.0 (CTAF) ①
-------------------------------	---	--



4 NM Holding Pattern	ZULOT	2700	← 175°	→ 355°	WURTO	2300	↘ 355°	RW35	2800	TOMHO
GP 3.00° TCH 45										
					7.1 NM	3.9 NM				
CATEGORY	A	B	C	D						
LPV DA	1295-1		287 (300-1)							
LNAV/VNAV DA	1478-1¾		470 (500-1¾)							
LNAV MDA	1540-1	532 (600-1)	1540-1½	532 (600-1½)	1540-1¾	532 (600-1¾)				
CIRCLING	1540-1	531 (600-1)	1580-1	571 (600-1)	1800-2¼	791 (800-2¼)	1880-2¾	871 (900-2¾)		



SC-1, 28 NOV 2024 to 26 DEC 2024

SC-1, 28 NOV 2024 to 26 DEC 2024