

WAAS CH 86214 W02A	APP CRS 019°	Rwy Idg TDZE Apt Elev	7003 1265 1268
----------------------------------------	------------------------	-----------------------------	-------------------------------------------

RNAV (GPS) RWY 2

SPRINGFIELD-BRANSON NTL (SGF)

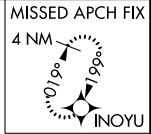
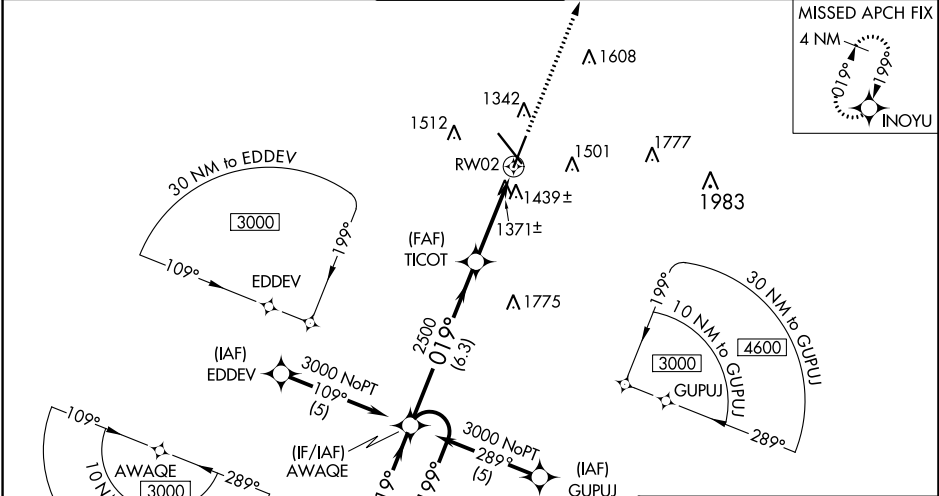
⚠ DME/DME RNP -0.3 NA. For uncompensated Baro-VNAV systems, LNAV/VNAV NA below -17°C (2°F) or above 45°C (113°F). Baro-VNAV and VDP NA when using Monett altimeter setting. For inoperative MALS, increase LNAV Cat A and B visibility to RVR 5000. When local altimeter setting not received, use Monett altimeter setting and increase all DAs 90 feet and all MDAs 100 feet, increase LPV visibility all Cats to RVR 5000, LNAV/VNAV visibility all Cats to 1½ miles, LNAV visibility Cat C to RVR 5000 and Cat D to RVR 6000, and increase visibility Circling Cat C to 1¾ miles, and Cat D to 2 miles. For inoperative MALS, when using Monett altimeter setting, increase LPV visibility all Cats to 1½, LNAV Cat A and B visibility to RVR 5000.

MALS



MISSED APPROACH: Climb to 3000 direct INOYU and hold.

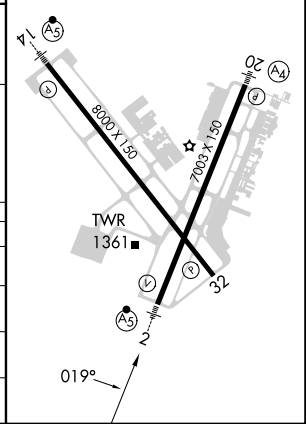
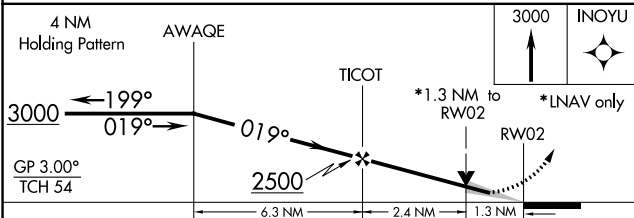
ATIS 135.125	SPRINGFIELD APP CON 124.95 290.5	SPRINGFIELD TOWER 119.9 257.8	GND CON 121.9 251.15	CLNC DEL 123.675
------------------------	--------------------------------------------	-----------------------------------------	--------------------------------	----------------------------



NC-3, 28 NOV 2024 to 26 DEC 2024

NC-3, 28 NOV 2024 to 26 DEC 2024

ELEV 1268	D TDZE 1265
REIL Rwy 32	HIRL Rwys 2-20 and 14-32



CATEGORY	A	B	C	D
LPV DA		1590/40	325 (400-¾)	
LNAV/VNAV DA		1754/60	489 (500-1¼)	
LNAV MDA	1720/40	455 (500-¾)		1720/50 455 (500-1)
C CIRCLING	1760-1 492 (500-1)	1820-1 552 (600-1)	1820-1½ 552 (600-1½)	1920-2 652 (700-2)