

VORTAC SGF 116.9 Chan 116	APP CRS 196°	Rwy Idg TDZE Apt Elev	7003 1262 1268
---	------------------------	-----------------------------	---

VOR or TACAN RWY 20

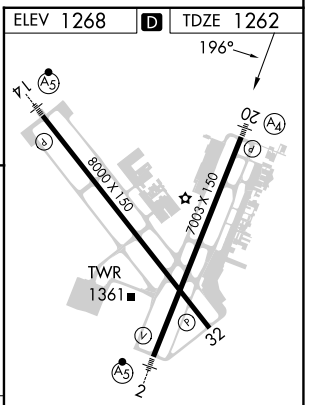
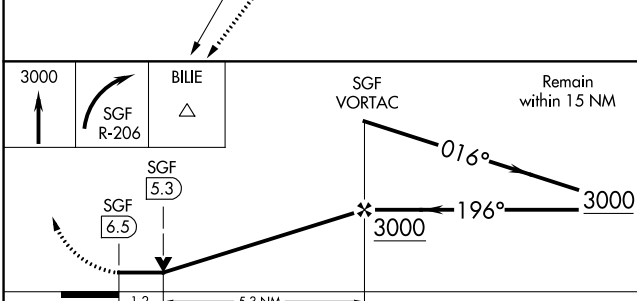
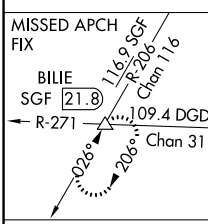
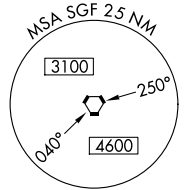
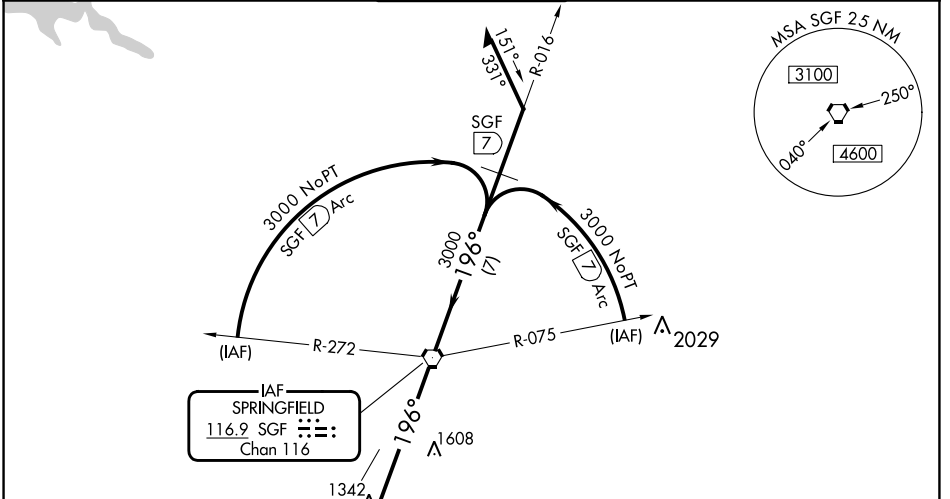
SPRINGFIELD-BRANSON NTL (SGF)

⚠ Inoperative table does not apply to Cat C. Helicopter visibility reduction below 3/4 SM not authorized. When local altimeter setting not received, use Monett altimeter setting and increase all MDA 100 feet, increase S-20 Cat C/D/E visibility 1/4 mile, increase Circling Cat C/E visibility 1/4 mile. VDP NA when using Monett altimeter setting.

MALS $\text{A}_4 = \text{E}$

MISSED APPROACH: Climb to 3000 then right turn to intercept SGF R-206 to BILIE INT/SGF 21.8 DME and hold.

ATIS 135.125	SPRINGFIELD APP CON 124.95 290.5	SPRINGFIELD TOWER 119.9 257.8	GND CON 121.9 251.15	CLNC DEL 123.675
------------------------	--	---	--------------------------------	----------------------------



CATEGORY	A	B	C	D	E
S-20	1700-3/4 438 (500-3/4)		1700-1 1/4 438 (500-1 1/4)	1700-1 1/2 438 (500-1 1/2)	
C CIRCLING	1760-1 492 (500-1)	1820-1 552 (600-1)	1820-1 1/2 552 (600-1 1/2)	1920-2 652 (700-2)	2080-3 812 (900-3)

REIL Rwy 32	HRL Rlys 2-20 and 14-32				
FAF to MAP 6.5 NM					
Knots	60	90	120	150	180
Min:Sec	6:30	4:20	3:15	2:36	2:10

NC-3, 28 NOV 2024 to 26 DEC 2024

NC-3, 28 NOV 2024 to 26 DEC 2024