

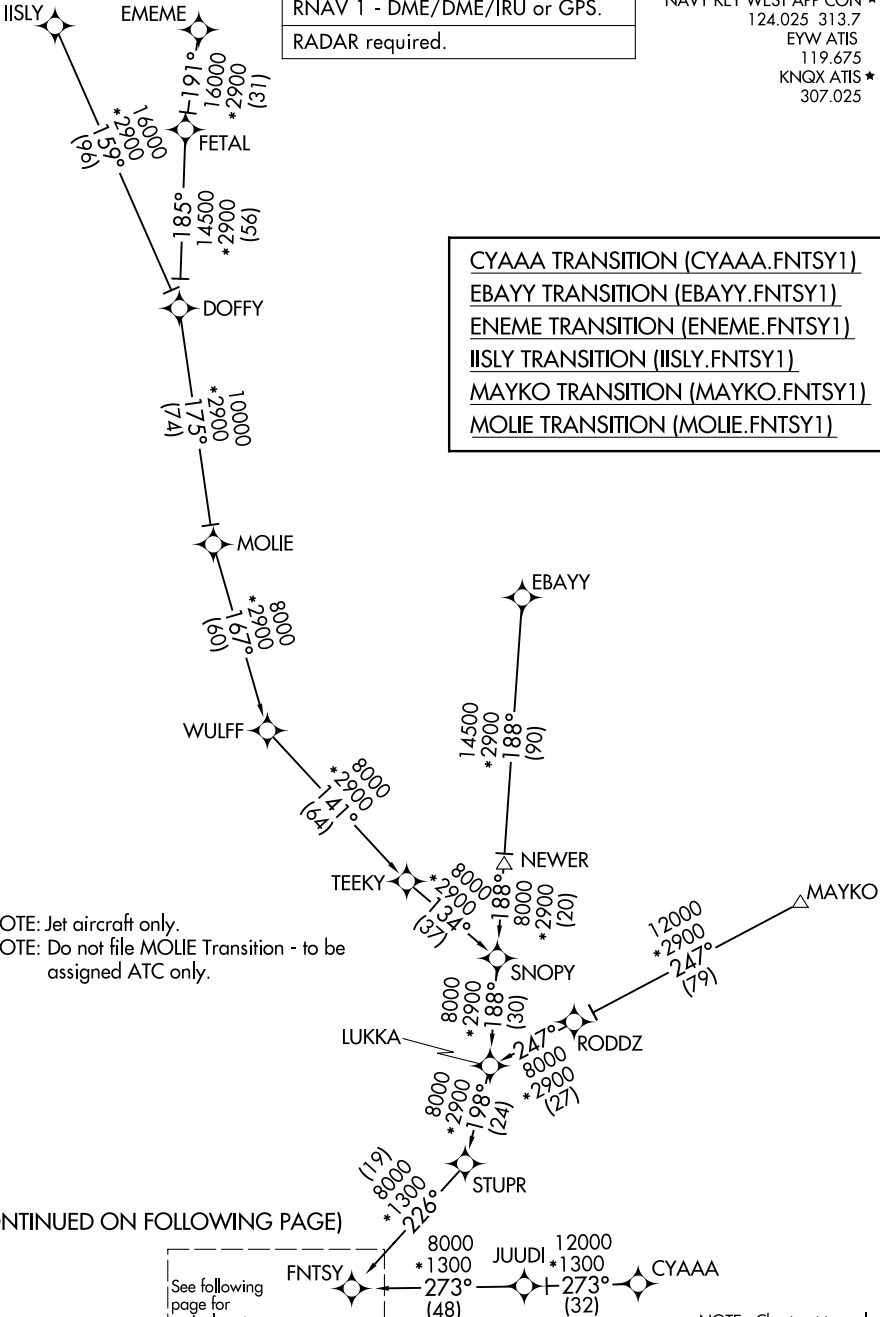
FNTSY ONE ARRIVAL (RNAV) Transition Routes

KEY WEST, FLORIDA

| |
|------------------------------|
| RNAV 1 - DME/DME/IRU or GPS. |
| RADAR required. |

NAVY KEY WEST APP CON *
 124.025 313.7
 EYW ATIS
 119.675
 KNQX ATIS *
 307.025

- CYAAA TRANSITION (CYAAA.FNTSY1)
- EBAYY TRANSITION (EBAYY.FNTSY1)
- ENEME TRANSITION (ENEME.FNTSY1)
- IISLY TRANSITION (IISLY.FNTSY1)
- MAYKO TRANSITION (MAYKO.FNTSY1)
- MOLIE TRANSITION (MOLIE.FNTSY1)



NOTE: Jet aircraft only.
 NOTE: Do not file MOLIE Transition - to be assigned ATC only.

(CONTINUED ON FOLLOWING PAGE)

See following page for arrival routes

NOTE: Chart not to scale.

SE-3, 28 NOV 2024 to 26 DEC 2024

SE-3, 28 NOV 2024 to 26 DEC 2024

FNTSY ONE ARRIVAL (RNAV) Transition Routes

KEY WEST, FLORIDA

FNTSY ONE ARRIVAL (RNAV) (FNTSY.FNTSY1) 31OCT24

Arrival Routes

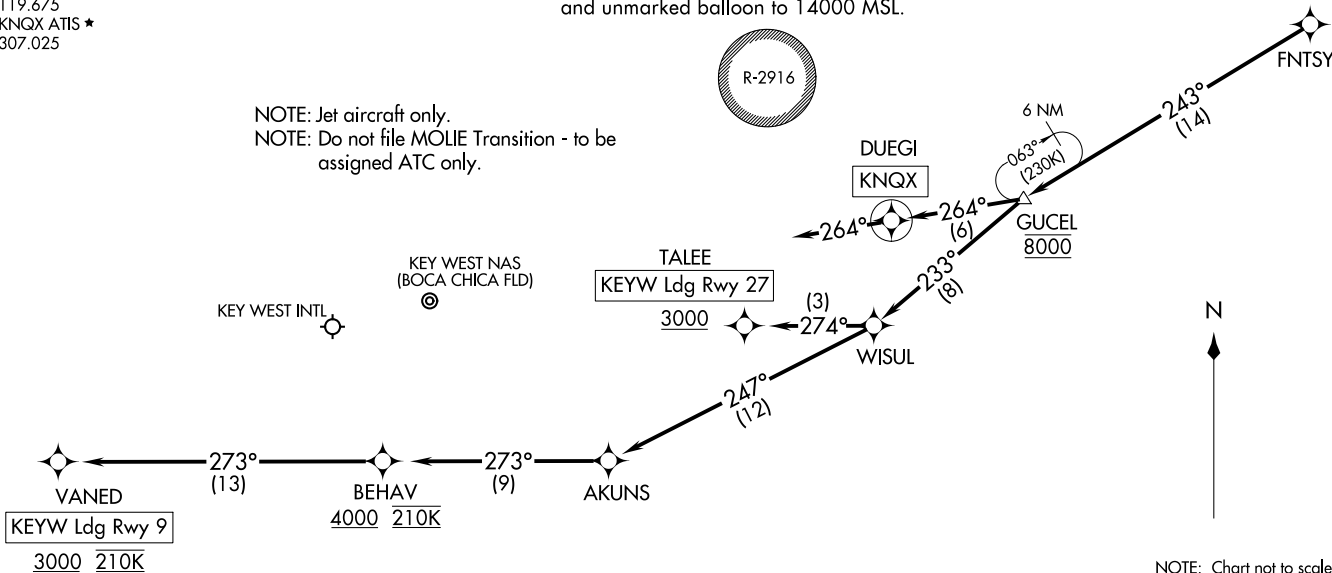
KEY WEST, FLORIDA

NAVY KEY WEST APP CON★
 124.025 313.7
 EYW ATIS
 119.675
 KNQX ATIS★
 307.025

RESTRICTED AREA R-2916 - Caution cable and unmarked balloon to 14000 MSL.

RNAV 1 - DME/DME/IRU or GPS.
 RADAR required.

NOTE: Jet aircraft only.
 NOTE: Do not file MOLIE Transition - to be assigned ATC only.



ARRIVAL ROUTE DESCRIPTION

KEYW: From FNTSY on track 243° to cross GUCEL at 8000, then on track 233° to WISUL.
LANDING KEYW RUNWAY 9: From WISUL on track 247° to AKUNS, then on track 273° to cross BEHAV at or above 4000 and at 210K, then on track 273° to cross VANED at or above 3000 and at 210K. Expect RNAV (GPS) RWY 9 approach.
LANDING KEYW RUNWAY 27: From WISUL on track 274° to cross TALEE at or above 3000. Expect RNAV (GPS) RWY 27 approach.
LANDING KNQX: From FNTSY on track 243° to cross GUCEL at 8000, then on track 264° to DUEGI, then on track 264°. Expect RADAR vectors to final approach course.

NOTE: Chart not to scale.

(FNTSY.FNTSY1) 24305

AL-606 (FAA)
 Arrival Routes

KEY WEST, FLORIDA