

WAAS CH <b>82100</b> <b>W27A</b>	APP CRS <b>273°</b>	Rwy Idg TDZE Apt Elev	<b>4801</b> <b>3</b> <b>3</b>
--	------------------------	-----------------------------	-------------------------------------

# RNAV (GPS) RWY 27

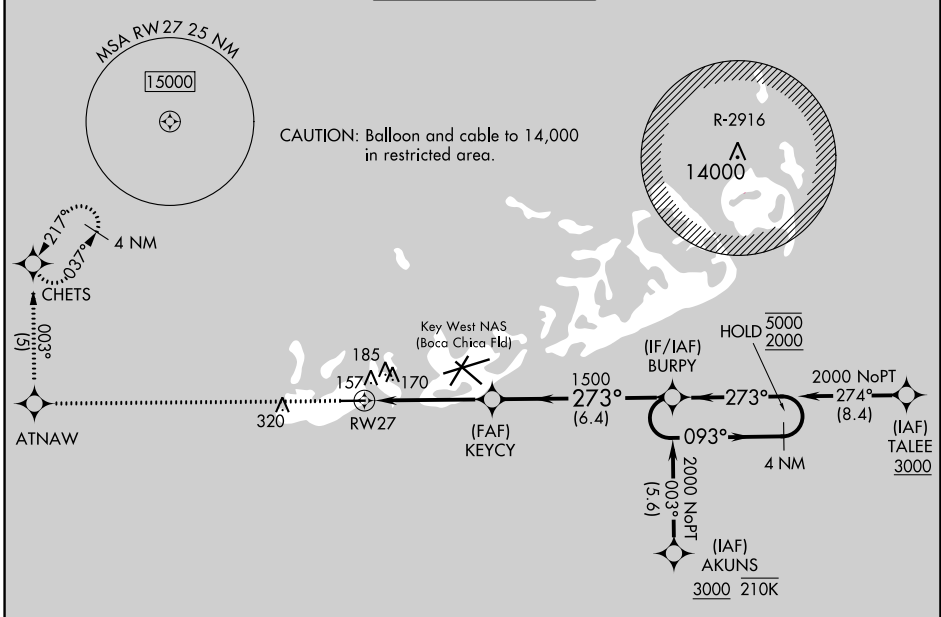
KEY WEST INTL (EYW)

RNP APCH - GPS.

**⚠** Rwy 27 helicopter visibility reduction below 3/4 SM NA.  
**⚠** VDP NA when using NQX altimeter setting. When local altimeter setting not received, use NQX altimeter setting.

MISSED APPROACH: Climb to 3000 direct ATNAW and on track 003° to CHETS and hold, continue to climb in hold to 3000.

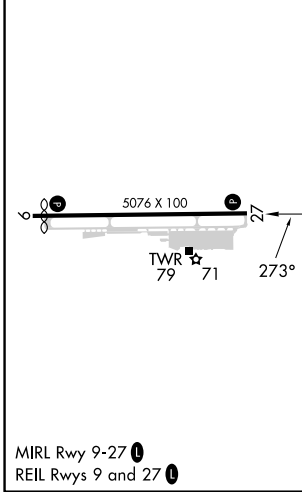
ATIS <b>119.675</b>	NAVY KEY WEST APP CON * <b>124.025 313.7</b>	KEY WEST TOWER * <b>118.2 (CTAF) 257.8</b>	GND CON <b>121.9</b>	CLNC DEL <b>121.9</b>	UNICOM <b>122.95</b>
------------------------	---	---	-------------------------	--------------------------	-------------------------



SE-3, 28 NOV 2024 to 26 DEC 2024

SE-3, 28 NOV 2024 to 26 DEC 2024

ELEV 3	<b>D</b>	TDZE 3
--------	----------	--------



3000	ATNAW	CHETS	VGSi and RNAV glidepath not coincident (VGSi Angle 3.00/TCH 34).			
↑	003° tr		BURPY			
	RW27	KEYCY	GP 3.00° TCH 45			
	1.3 NM	3.2 NM	6.4 NM			
CATEGORY	A	B	C	D		
LPV DA	253-1		250 (300-1)			
LNAV MDA	460-1	457 (500-1)	460-1 3/8		457 (500-1 3/8)	
CIRCLING	500-1	497 (500-1)	620-1 3/4		620-2	
			617 (700-1 3/4)		617 (700-2)	