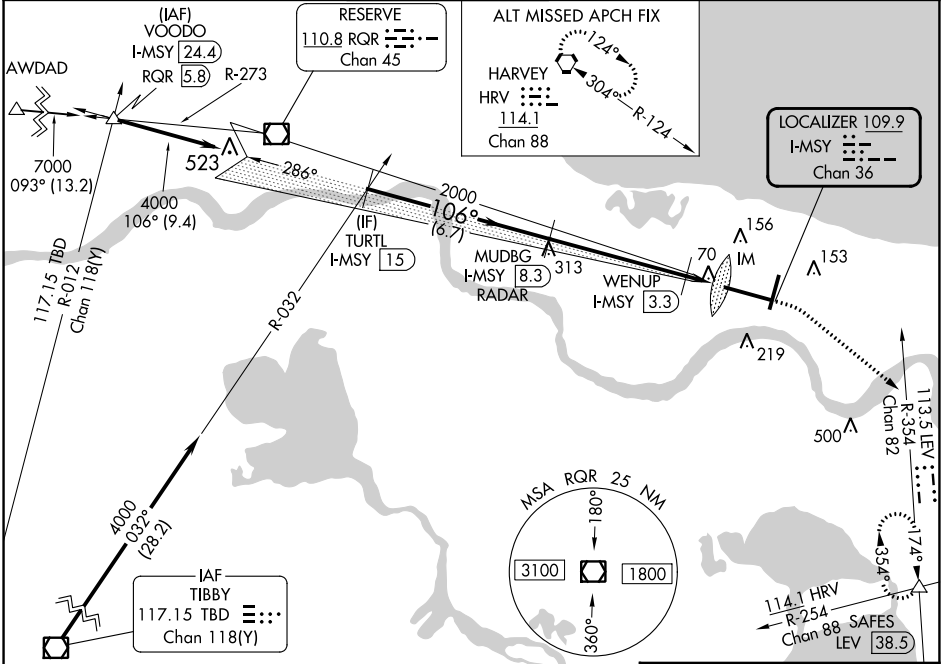


LOC/DME I-MSY 109.9 Chan 36	APP CRS 106°	Rwy Idg 9800 TDZE 4 Apt Elev 4
---	------------------------	---

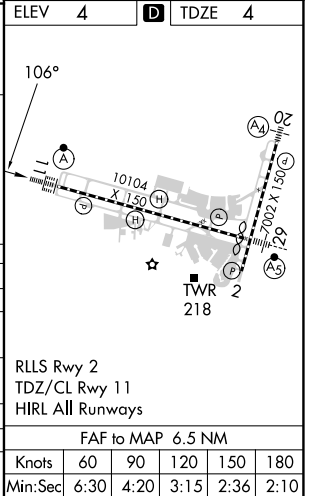
ILS or LOC RWY 11

LOUIS ARMSTRONG NEW ORLEANS INTL (MSY)

RADAR or DME required.		ALSF-2 	MISSED APPROACH: Climb to 800 then climbing right turn to 2000 on heading 130° and on LEV VORTAC R-354 to SAFES INT/LEV 38.5 DME and hold.		
For inop ALS, increase S-LOC 11 Cat C/D visibility to 1 1/2 SM and increase WENUP fix minimums S-LOC 11 Cat C/D visibility to RVR 4500.					
D-ATIS 127.55	NEW ORLEANS APP CON WEST 125.5 350.35 EAST 133.15 290.3	NEW ORLEANS TOWER 119.5 254.3	GND CON 121.9 273.525	CLNC DEL 120.925	CPDLC



TURTLE I-MSY (15)	VGS and ILS glidepath not coincident (VGS Angle 2.80/TCH 73).		800	2000	SAFES	ELEV 4	TDZE 4
MUDBG I-MSY (8.3) RADAR	2000	WENUP I-MSY (3.3)	↑	hdg 130°	LEV R-354		
GS 2.80° TCH 56	106°	2000	500	IM			
	6.7 NM	5 NM	0.6	0.8	0.1		
CATEGORY	A	B	C	D			
S-ILS 11	204/18		200 (200-1/2)				
S-LOC 11	500/24	496 (500-1/2)	500/50	496 (500-1)			
CIRCLING	520-1	516 (600-1)	580-1 1/2 576 (600-1 1/2)	600-2 596 (600-2)			
WENUP FIX MINIMUMS							
S-LOC 11	320/24		316 (400-1/2)				
CIRCLING	520-1	516 (600-1)	580-1 1/2 576 (600-1 1/2)	600-2 596 (600-2)			



SC-4, 28 NOV 2024 to 26 DEC 2024

SC-4, 28 NOV 2024 to 26 DEC 2024