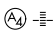


LOC/DME I-ONW <b>111.7</b> Chan <b>54</b>	APP CRS <b>196°</b>	Rwy Idg <b>6948</b> TDZE <b>-1</b> Apt Elev <b>4</b>
---	------------------------	--

# LOC RWY 20

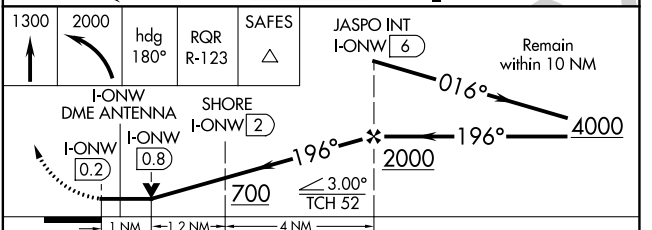
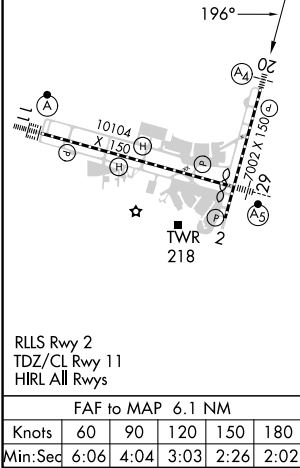
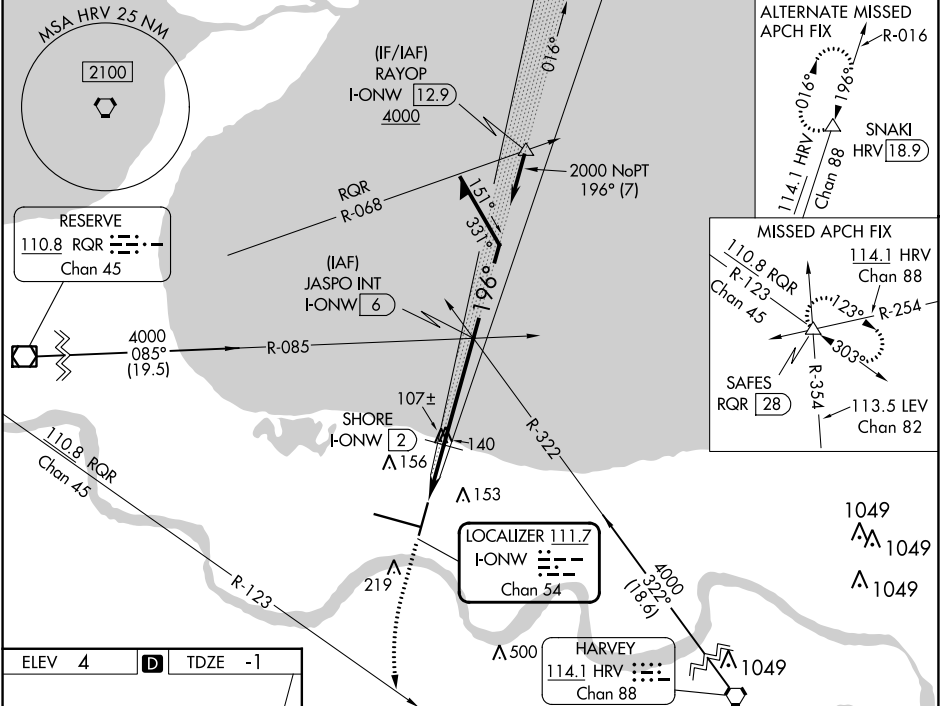
LOUIS ARMSTRONG NEW ORLEANS INTL (MSY)

**⚠** Rwy 20 helicopter visibility reduction below RVR 4000 NA.  
**⚠** For inop ALS when using SHORE fix minimums, increase S-20 Cat D visibility to RVR 5500. For inop ALS, increase S-20 Cat D visibility to 2 SM.

**MALS** 

**MISSED APPROACH:** Climb to 1300 then climbing left turn to 2000 on heading 180° and RQR VOR/DME R-123 to SAFES INT/RQR 28 DME and hold.

D-ATIS <b>127.55</b>	NEW ORLEANS APP CON WEST <b>125.5 350.35</b> EAST <b>133.15 290.3</b>	NEW ORLEANS TOWER <b>119.5 254.3</b>	GND CON <b>121.9 273.525</b>	CLNC DEL <b>120.925</b>	CPDLC
-------------------------	---	---	---------------------------------	----------------------------	-------



CATEGORY	A		B	C	D
	S-20	700/40	701 (700-¾)	700-1¾	701 (700-1¾)
<b>C</b> CIRCLING	700-1	696 (700-1)	700-2 696 (700-2)	700-2¼ 696 (700-2¼)	
SHORE FIX MINIMUMS					
S-20	360/40		361 (400-¾)		
<b>C</b> CIRCLING	520-1	516 (600-1)	580-1½ 576 (600-1½)	600-2 596 (600-2)	

SC-4, 28 NOV 2024 to 26 DEC 2024

SC-4, 28 NOV 2024 to 26 DEC 2024