

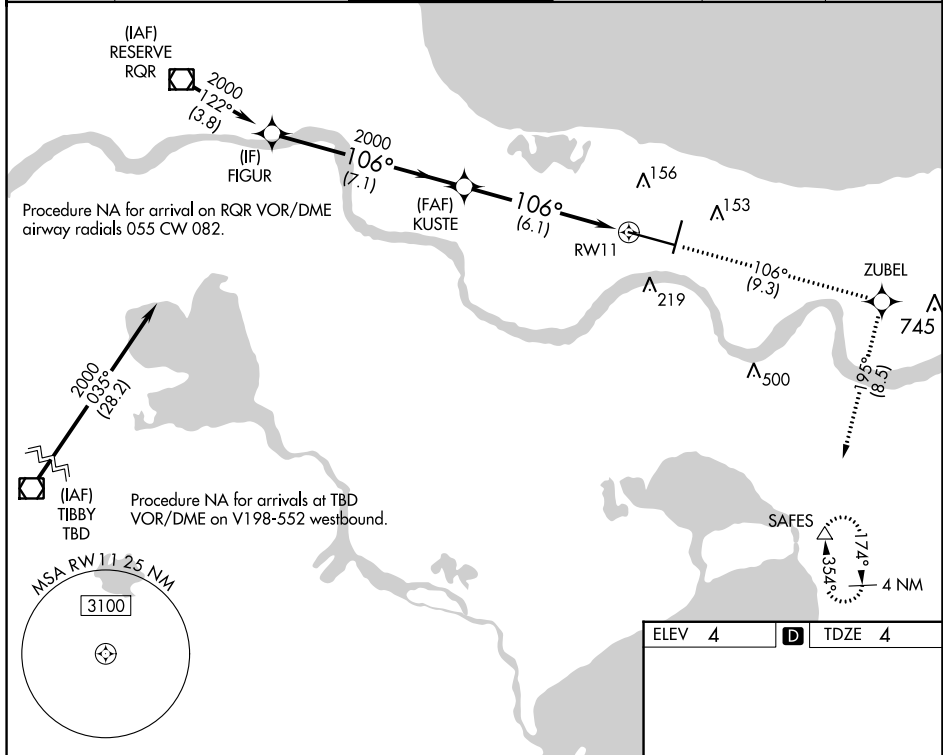
# RNAV (RNP) Z RWY 11

LOUIS ARMSTRONG NEW ORLEANS INTL (MSY)

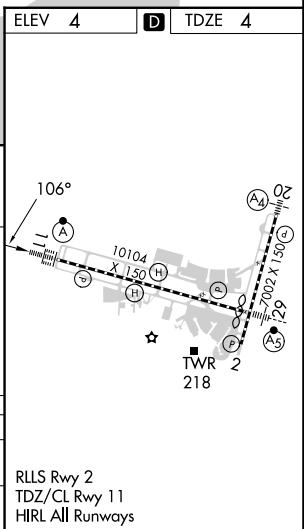
APP CRS	Rwy Idg	<b>9800</b>
<b>106°</b>	TDZE	<b>4</b>
	Apt Elev	<b>4</b>

RNP AR APCH - GPS.		ALSF-2	MISSED APPROACH: Climb to 2000 on track 106° to ZUBEL and on track 195° to SAFES and hold.
<p>▼ For uncompensated Baro-VNAV systems, procedure NA below -1°C or above 54°C. For inop ALS, increase RNP 0.30 all Cats visibility to RVR 5500.</p>			

D-ATIS	NEW ORLEANS APP CON	NEW ORLEANS TOWER	GND CON	CLNC DEL	CPDLC
<b>127.55</b>	WEST <b>125.5 350.35</b> EAST <b>133.15 290.3</b>	<b>119.5 254.3</b>	<b>121.9 273.525</b>	<b>120.925</b>	



VGSI and RNAV glidepath not coincident (VGSI Angle 2.80/TCH 73).	2000	ZUBEL	SAFES
	↑	tr 106°	tr 195°
FIGUR	KUSTE		
2000	2000		RW11
GP 3.00°			
TCH 55			
	7.1 NM	6.1 NM	
CATEGORY	A	B	C
RNP 0.30 DA	367/35 363 (400-5/8)		
<b>AUTHORIZATION REQUIRED</b>			



SC-4, 28 NOV 2024 to 26 DEC 2024

SC-4, 28 NOV 2024 to 26 DEC 2024