

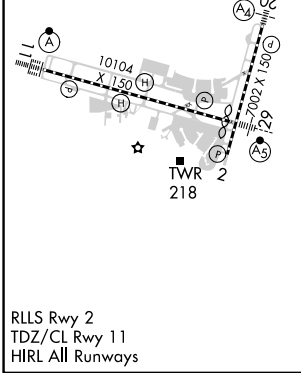
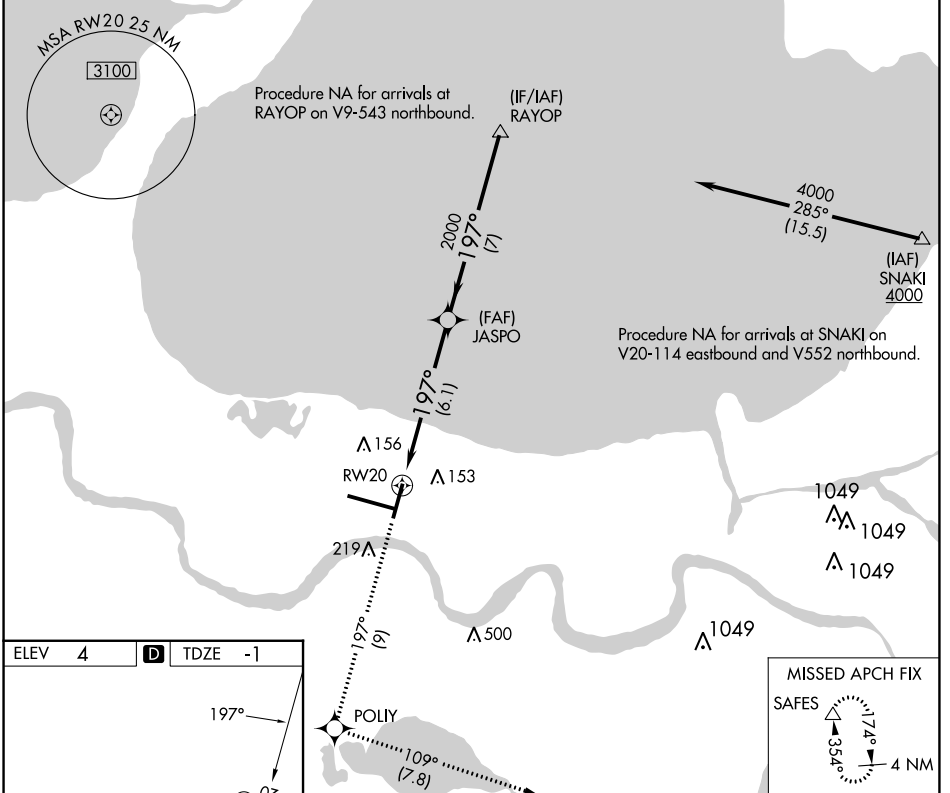
APP CRS 197°	Rwy Idg 6948
	TDZE -1
	Apt Elev 4

RNAV (RNP) Z RWY 20

LOUIS ARMSTRONG NEW ORLEANS INTL (MSY)

RNP AR APCH - GPS.	MALS 	MISSED APPROACH: Climb to 2000 on track 197° to POLIY and track 109° to SAFES and hold.
▼ For uncompensated Baro-VNAV systems, procedure NA below -1°C or above 54°C. For inop ALS, increase RNP 0.30 all Cats visibility to RVR 6000.		

D-ATIS 127.55	NEW ORLEANS APP CON WEST 125.5 350.35 EAST 133.15 290.3	NEW ORLEANS TOWER 119.5 254.3	GND CON 121.9 273.525	CLNC DEL 120.925	CPDLC
-------------------------	---	---	---------------------------------	----------------------------	-------



2000	↑ tr 197°	◆ POLIY	tr 109°	△ SAFES	RAYOP	4000
		JASPO	2000	197°	2000	GP 3.00° TCH 52
		RW20			6.1 NM	7 NM
CATEGORY	A	B	C	D		
RNP 0.11 DA	363/40		364 (400-¾)			
RNP 0.30 DA	414/50		415 (500-1)			

SC-4, 28 NOV 2024 to 26 DEC 2024

SC-4, 28 NOV 2024 to 26 DEC 2024

AUTHORIZATION REQUIRED