

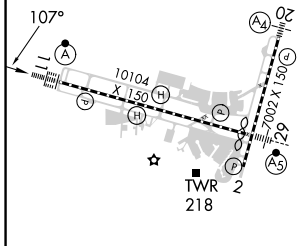
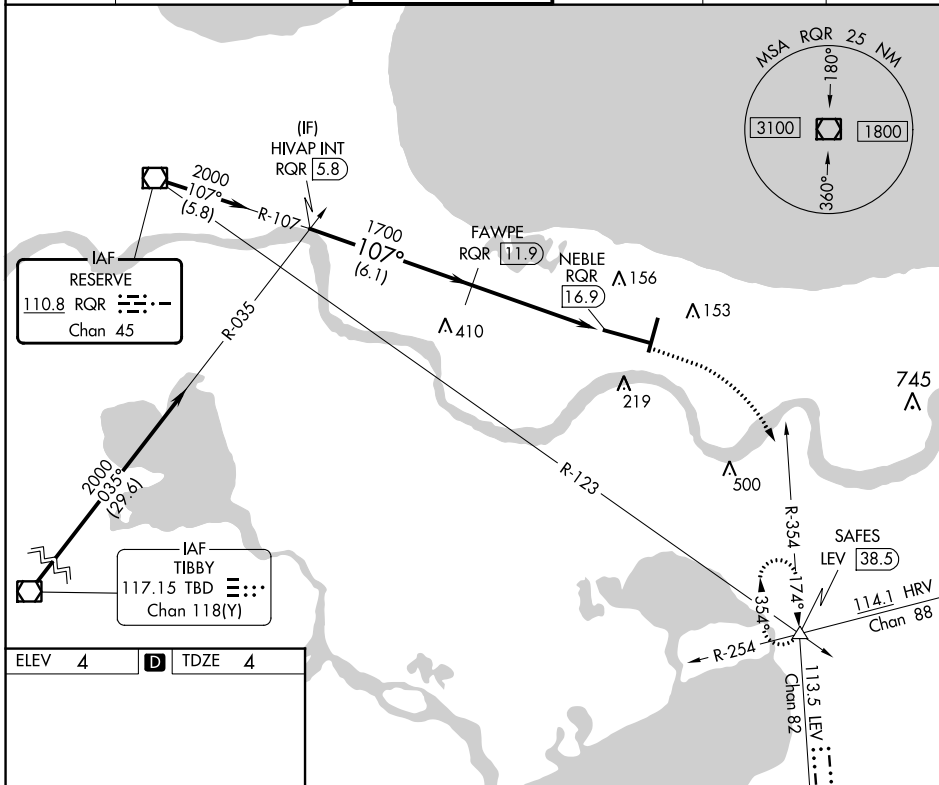
VOR/DME RQR	APP CRS	Rwy Idg	<b>9800</b>
<b>110.8</b>	<b>107°</b>	TDZE	<b>4</b>
Chan <b>45</b>		Apt Elev	<b>4</b>

# VOR/DME RWY 11

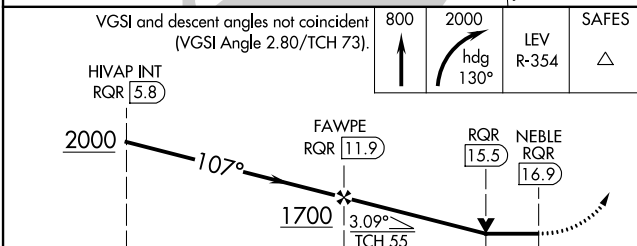
LOUIS ARMSTRONG NEW ORLEANS INTL (MSY)

		MISSED APPROACH: Climb to 800 then climbing right turn to 2000 on heading 130° and LEV VORTAC R-354 to SAFES INT/LEV 38.5 DME and hold.	
--	--	---	--

D-ATIS	NEW ORLEANS APP CON	NEW ORLEANS TOWER	GND CON	CLNC DEL	CPDLC
<b>127.55</b>	WEST <b>125.5 350.35</b> EAST <b>133.15 290.3</b>	<b>119.5 254.3</b>	<b>121.9 273.525</b>	<b>120.925</b>	



ELEV	<b>4</b>	TDZE	<b>4</b>
RLLS Rwy 2 TDZ/CL Rwy 11 HIRL All Runways			



CATEGORY	A	B	C	D
S-11	460/24 456 (500-1/2)			
<input checked="" type="checkbox"/> CIRCLING	520-1	516 (600-1)	580-1 1/2 576 (600-1 1/2)	600-2 596 (600-2)

SC-4, 28 NOV 2024 to 26 DEC 2024

SC-4, 28 NOV 2024 to 26 DEC 2024