

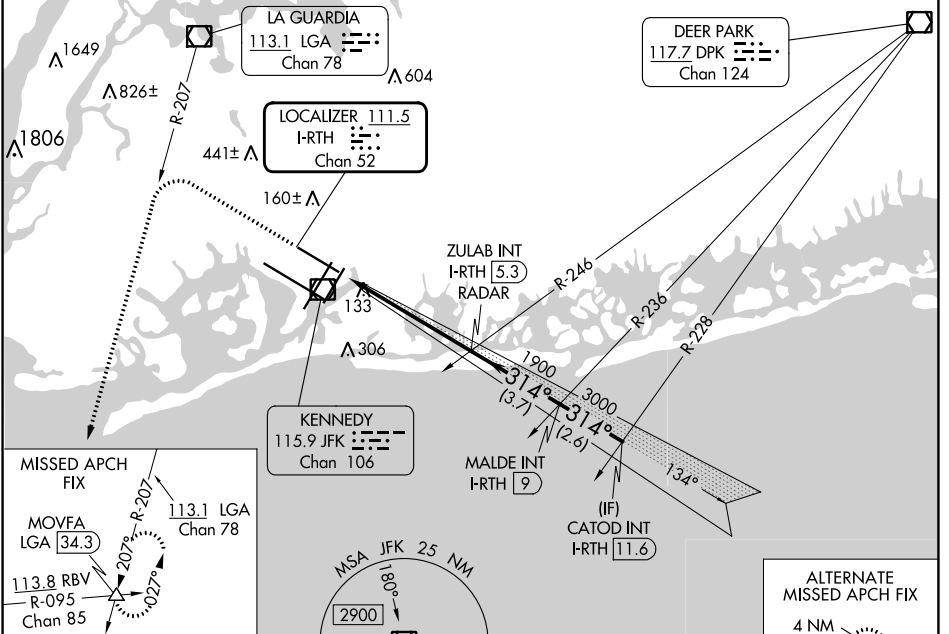
LOC/DME I-RTH 111.5 Chan 52	APP CRS 314°	Rwy Idg TDZE 13 Apt Elev 13
--	------------------------	---

ILS or LOC RWY 31R

JOHN F KENNEDY INTL (JFK)

RADAR required for procedure entry.		MALSR	MISSED APPROACH: Climb to 1800 then climbing left turn to 4000 on LGA VOR/DME R-207 to MOVFA INT/LGA 34.3 DME and hold.
Simultaneous approach authorized.			

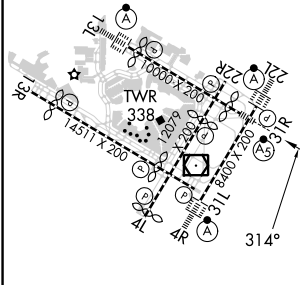
D-ATIS (ARR/DEP) (ARR-NE) (ARR-SW) 128.725 117.7 115.4	NEW YORK APP CON 128.125 269.0	KENNEDY TOWER Rwys 4R/22L and 13L/31R 119.1 281.55 Rwys 4L/22R and 13R/31L 123.9 281.55	GND CON 121.9 135.05 348.6	CLNC DEL 135.05 348.6	CPDLC
---	--	---	--------------------------------------	---------------------------------	-------



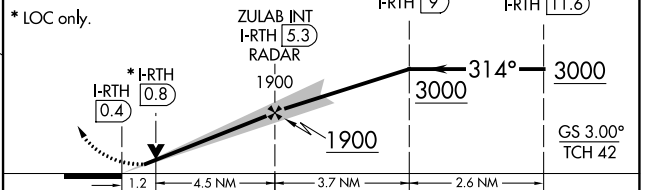
NE-2, 28 NOV 2024 to 26 DEC 2024

NE-2, 28 NOV 2024 to 26 DEC 2024

ELEV 13	D	TDZE 13
---------	----------	---------



1800	4000	LGA R-207	MOVFA △	VGSI and ILS glidepath not coincident (VGSI Angle 3.00°/TCH 54).
------	------	-----------	---------	--



RLS Rwys 13L and 13R					
HIRL all Rwys					
TDZ/CL Rwys 4L, 4R, 13L, 22L and 31R					
FAF to MAP 5.7 NM					
Knots	60	90	120	150	180
Min:Sec	5:42	3:48	2:51	2:17	1:54

CATEGORY	A	B	C	D
S-ILS 31R	212/18 200 (200-½)			
S-LOC 31R	440/24	428 (500-½)	440/40	428 (500-¾)
<input checked="" type="checkbox"/> CIRCLING	640-1	627 (700-1)	680-1¾ 667 (700-1¾)	680-2 667 (700-2)