

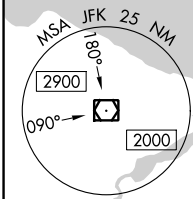
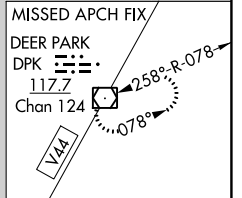
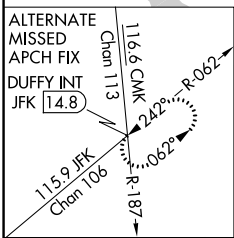
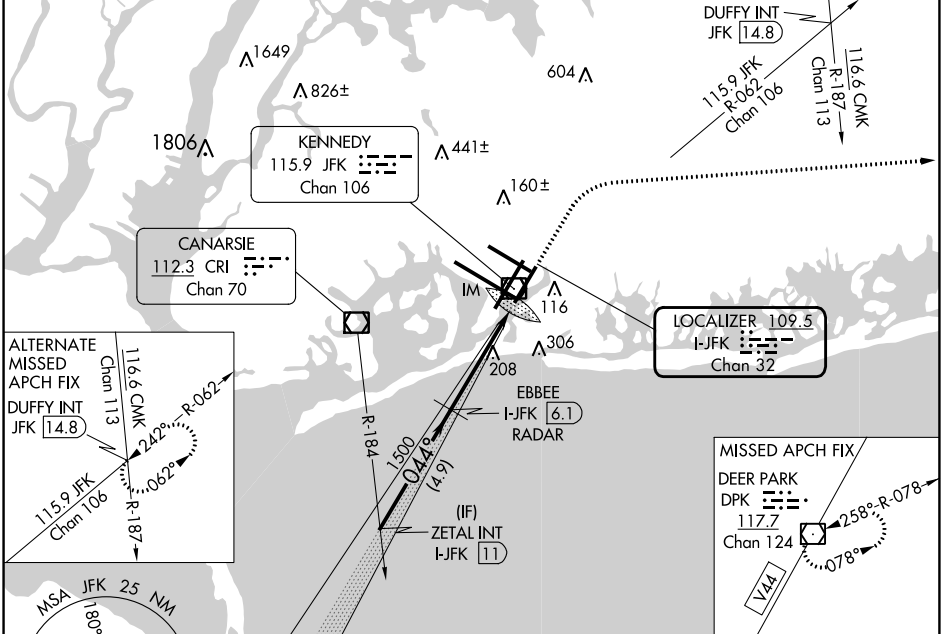
LOC/DME I-JFK 109.5 Chan 32	APP CRS 044°	Rwy ldg 8400 TDZE 12 Apt Elev 13
--	------------------------	---

ILS or LOC RWY 4R

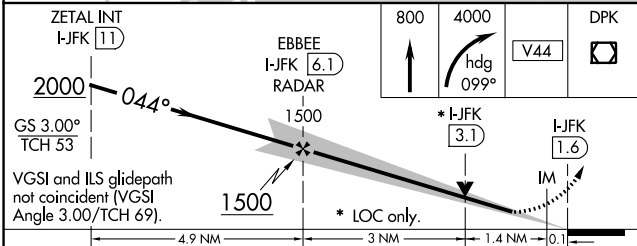
JOHN F KENNEDY INTL (JFK)

RADAR required for procedure entry.		ALSF-2	MISSED APPROACH: Climb to 800 then climbing right turn to 4000 heading 099° and V44 to DPK VOR/DME and hold.		
Simultaneous approach authorized.					

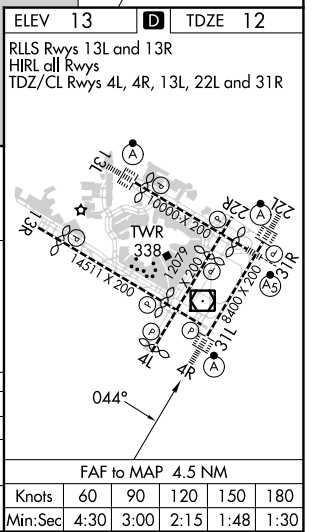
D-ATIS (ARR/DEP)(ARR-NE) (ARR-SW) 128.725 117.7 115.4	NEW YORK APP CON 128.125 269.0	KENNEDY TOWER Rwys 4R/22L and 13L/31R 119.1 281.55 Rwys 4L/22R and 13R/31L 123.9 281.55	GND CON 121.9 348.6	CLNC DEL 135.05 348.6	CPDLC
--	--	---	-------------------------------	---------------------------------	-------



ELEV 13	TDZE 12
RLS Rwys 13L and 13R HIRL all Rwys TDZ/CL Rwys 4L, 4R, 13L, 22L and 31R	



CATEGORY	A	B	C	D
S-ILS 4R	212/18		200 (200-½)	
S-LOC 4R	540/24	528 (600-½)	540/55	528 (600-1)
CIRCLING	640-1 627 (700-1)		680-1¾ 667 (700-1¾)	680-2 667 (700-2)



NE-2, 28 NOV 2024 to 26 DEC 2024

NE-2, 28 NOV 2024 to 26 DEC 2024

FAF to MAP 4.5 NM					
Knots	60	90	120	150	180
Min:Sec	4:30	3:00	2:15	1:48	1:30