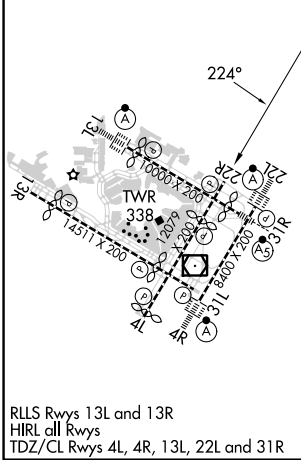
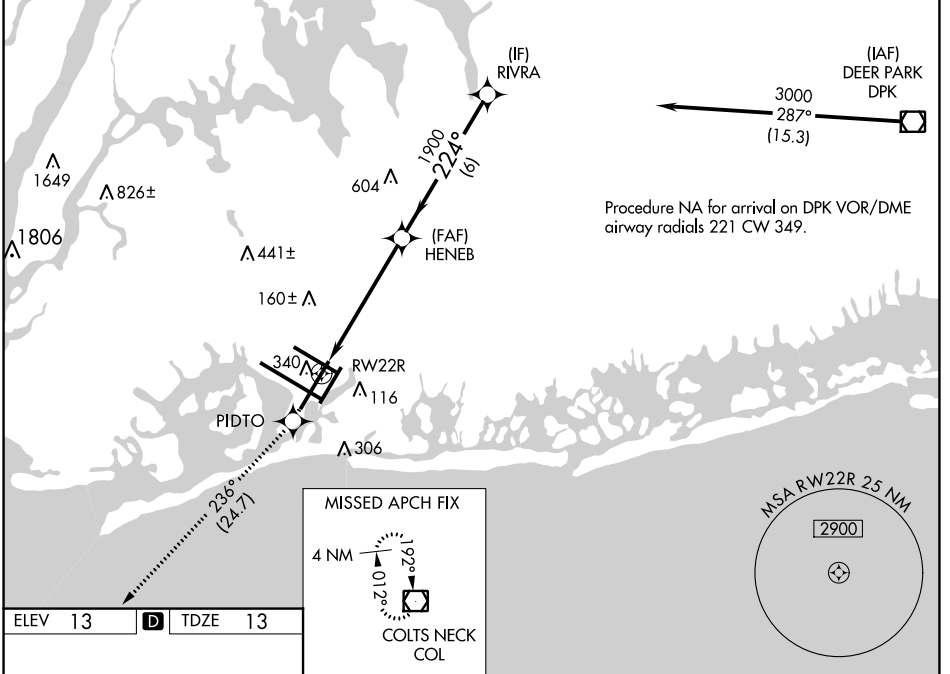


WAAS CH 40019 W22B	APP CRS 224°	Rwy Idg 7795 TDZE 13 Apt Elev 13
--	------------------------	---

RNAV (GPS) RWY 22R

JOHN F KENNEDY INTL (JFK)

RNP APCH.		MISSED APPROACH: Climb to 4000 direct PIDTO and on track 236° to COL VOR/DME and hold.	
Simultaneous approach authorized. Use of FD or AP providing RNAV track guidance required during simultaneous operations. LNAV procedure NA during simultaneous operations. For uncompensated Baro-VNAV systems, LNAV/VNAV NA below -12°C or above 54°C.			
D-ATIS (ARR/DEP) (ARR-NE) (ARR-SW) 128.725 117.7 115.4	NEW YORK APP CON 128.125 269.0	KENNEDY TOWER Rwys 4R/22L and 13L/31R 119.1 281.55 Rwys 4L/22R and 13R/31L 123.9 281.55	GND CON 121.9 348.6 CLNC DEL 135.05 348.6 CPDLC



ELEV 13	D	TDZE 13	
MISSED APCH FIX 4 NM 192° 012° COLTS NECK COL			
4000	PIDTO	COL	VGSI and RNAV glidepath not coincident (VGSI Angle 3.00/TCH 77).
↑	✧ tr 236°	◻	
*LNAV only.			
RWY 22R *1.6 NM to RWY 22R		HENEB 1900	RIVRA 3000
1.6 NM 4.1 NM 6 NM		1900 224°	GP 3.00° TCH 59
CATEGORY	A	B	C
LPV DA	269/40	256 (300-¾)	
LNAV/VNAV DA	501-1½	488 (500-1½)	
LNAV MDA	600/55	587 (600-1)	600-1¾ 587 (600-1¾)
C CIRCLING	640-1	627 (700-1)	680-1¾ 667 (700-1¾) 680-2 667 (700-2)

NEW YORK, NEW YORK
 Amdt 1G 21MAY20

40°38'N-73°47'W

RNAV (GPS) RWY 22R

NE-2, 28 NOV 2024 to 26 DEC 2024

NE-2, 28 NOV 2024 to 26 DEC 2024