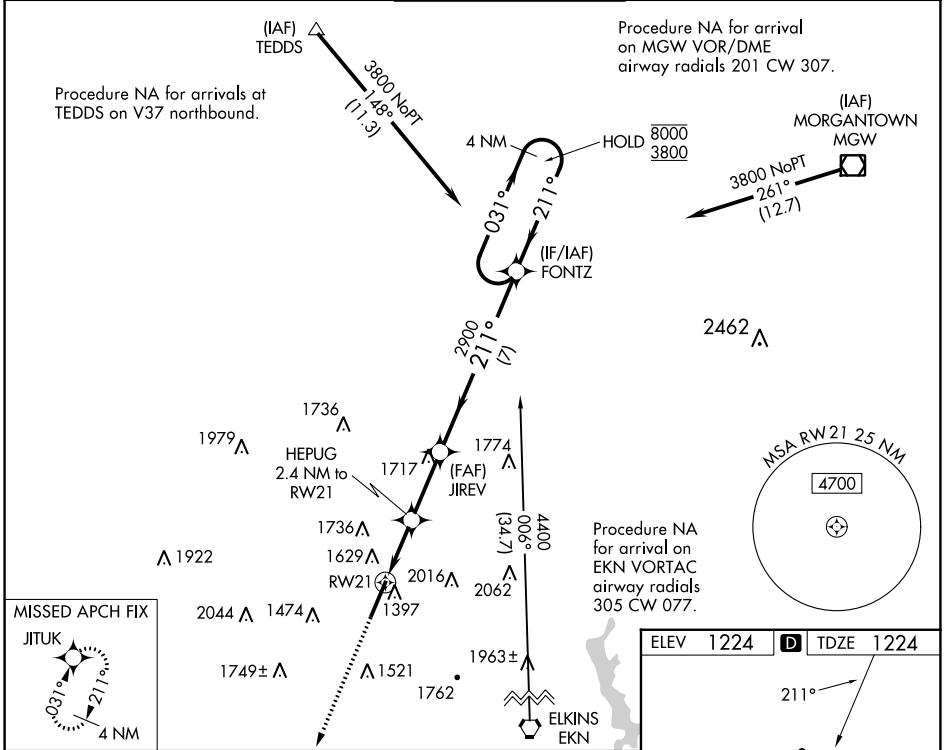


WAAS CH 82504 W21A	APP CRS 211°	Rwy Idg TDZE Apt Elev	7130 1224 1224
--	------------------------	-----------------------------	---

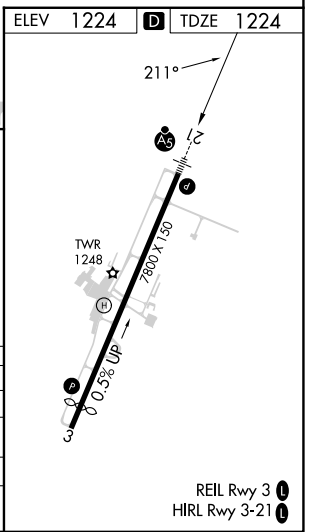
RNAV (GPS) RWY 21

NORTH CENTRAL WEST VIRGINIA (CKB)

RNP APCH.		MALSR		MISSED APPROACH: Climb to 3900 direct JITUK and hold.	
<p>▼ For uncompensated Baro-VNAV systems, LNAV/VNAV NA below -16°C or above 54°C. For inop ALS, increase LNAV Cats C and D visibility to 1½ SM.</p>					
ATIS 127.825	CLARKSBURG APP CON ★ 121.15 284.65	CLARKSBURG TOWER ★ 126.7 (CTAF) 257.925	GND CON 121.9	UNICOM 123.0	



3900	JITUK	JIREV	FONTZ	4 NM Holding Pattern
↑		HEPUG 2.4 NM to RW21	2900	031° → 8000 ← 211° 3800
*LNAV only.				
<p>RW21: *1.6 NM to RW21, *2020, 2900, GP 3.00° TCH 60</p>				
CATEGORY	A	B	C	D
LPV DA		1424/24	200 (200-½)	
LNAV/VNAV DA		1786-1⅜	562 (600-1⅜)	
LNAV MDA	1800/24	576 (600-½)	1800-1¼	576 (600-1¼)
CIRCLING	1940-1 716 (800-1)	2040-1¼ 816 (900-1¼)	2320-3	1096 (1100-3)



NE-4, 28 NOV 2024 to 26 DEC 2024

NE-4, 28 NOV 2024 to 26 DEC 2024