

|   |                        |   |
|---|------------------------|---|
| VOR/DME ECG<br><b>115.75</b><br>Chan <b>104 (Y)</b> | APP CRS<br><b>184°</b> | Rwy Idg <b>4518</b><br>TDZE <b>11</b><br>Apt Elev <b>11</b> |
|---|------------------------|---|

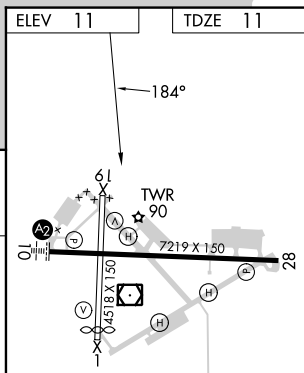
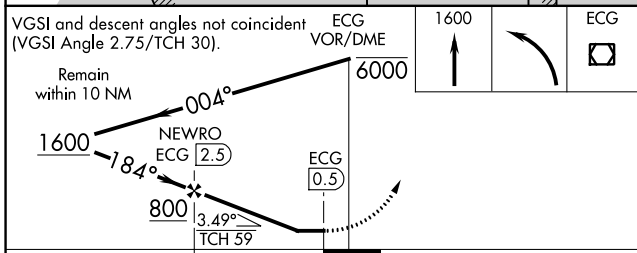
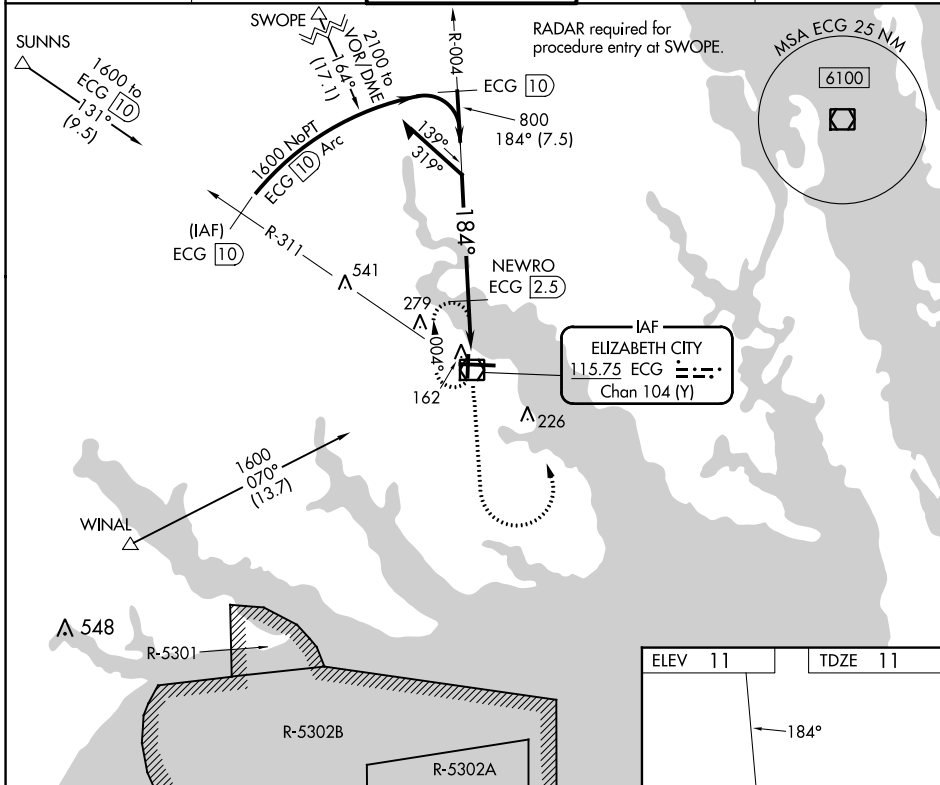
# VOR/DME RWY 19

ELIZABETH CITY CG AIR STATION/RGNL (ECG)

**Procedure NA** when tethered balloon located approximately 2 miles southeast of airport is flying. When local altimeter setting not received, use Currituck altimeter setting and increase all MDAs 40 feet.

**MISSED APPROACH:** Climb to 1600 then left turn direct ECG VOR/DME and hold.

|                        |  |  |                         |                         |
|------------------------|--|--|-------------------------|-------------------------|
| ASOS<br><b>124.375</b> | NORFOLK APP CON<br><b>119.55 269.425</b> | ELIZABETH CITY TOWER★<br><b>120.5 (CTAF) 355.6</b> | GND CON<br><b>121.9</b> | UNICOM<br><b>122.95</b> |
|------------------------|--|--|-------------------------|-------------------------|



| CATEGORY | A                 | B | C  | D  |
|----------|-------------------|---|--|--|
| S-19     | 480-1 469 (500-1) |   | 480-1 <sup>3</sup> / <sub>8</sub> 469 (500-1 <sup>3</sup> / <sub>8</sub> ) | 480-1 <sup>1</sup> / <sub>2</sub> 469 (500-1 <sup>1</sup> / <sub>2</sub> ) |
| CIRCLING | 480-1 469 (500-1) |   | 640-1 <sup>3</sup> / <sub>4</sub> 629 (700-1 <sup>3</sup> / <sub>4</sub> ) | 640-2 629 (700-2)  |

SE-2, 28 NOV 2024 to 26 DEC 2024

SE-2, 28 NOV 2024 to 26 DEC 2024