

WAAS CH <b>65914</b> <b>W36A</b>	APP CRS <b>005°</b>	Rwy Idg <b>7652</b> TDZE <b>782</b> Apt Elev <b>782</b>
--	------------------------	---

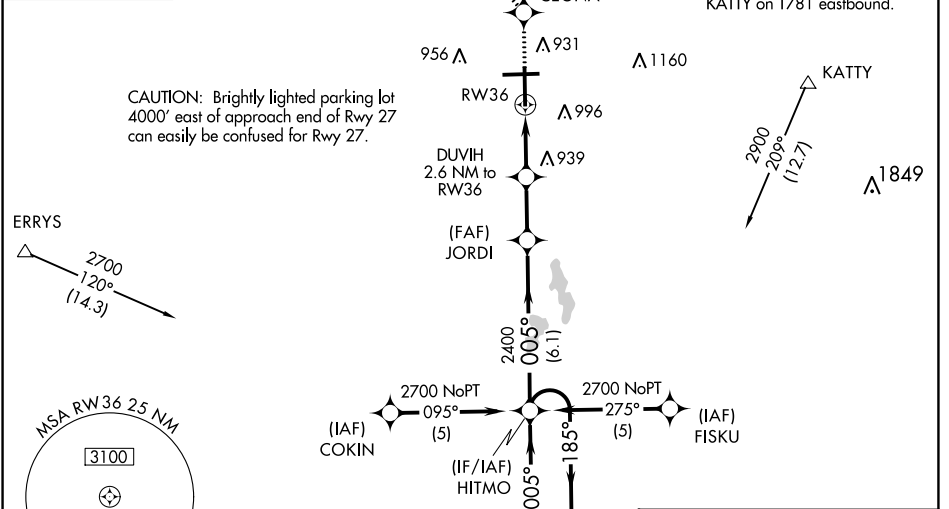
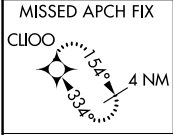
# RNAV (GPS) RWY 36

BISHOP INTL (F'NT)

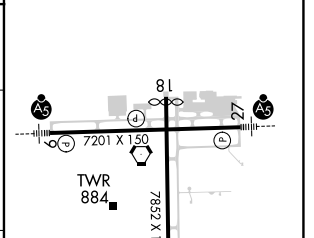
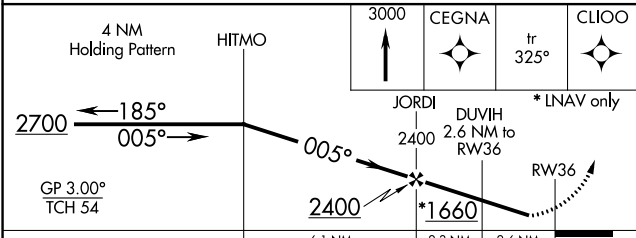
**⚠** For uncompensated Baro-VNAV systems, LNAV/VNAV NA below -16°C (4°F) or above 54°C (130°F). Rwy 36 helicopter visibility reduction below ¾ SM NA. DME/DME RNP -0.3 NA.

**MISSED APPROACH:** Climb to 3000 direct CEGNA and on track 325° to CLIOO and hold.

ATIS <b>133.15</b>	GREAT LAKES APP CON * <b>118.8 257.9</b>	FLINT TOWER * <b>126.3 (CTAF) 257.9</b>	GND CON <b>121.9</b>	CLNC DEL <b>121.75</b>	UNICOM <b>122.95</b>
-----------------------	---	--	-------------------------	---------------------------	-------------------------



ELEV 782	<b>D</b>	TDZE 782
HIRL Rwy 9-27 and 18-36 <b>Ⓛ</b> REIL Rwy 18 and 36 <b>Ⓛ</b>		



CATEGORY	A		B		C		D	
LPV DA	1123-1¼		341 (400-1¼)					
LNAV/VNAV DA	1254-1¾		472 (500-1¾)					
LNAV MDA	1260-1	478 (500-1)	1260-1¾	478 (500-1¾)	1260-1½	478 (500-1½)	1260-1½	478 (500-1½)
<b>C</b> CIRCLING	1260-1	1300-1	1300-1½	1520-2¼	478 (500-1)	518 (600-1)	518 (600-1½)	738 (800-2¼)

EC-1, 28 NOV 2024 to 26 DEC 2024

EC-1, 28 NOV 2024 to 26 DEC 2024