

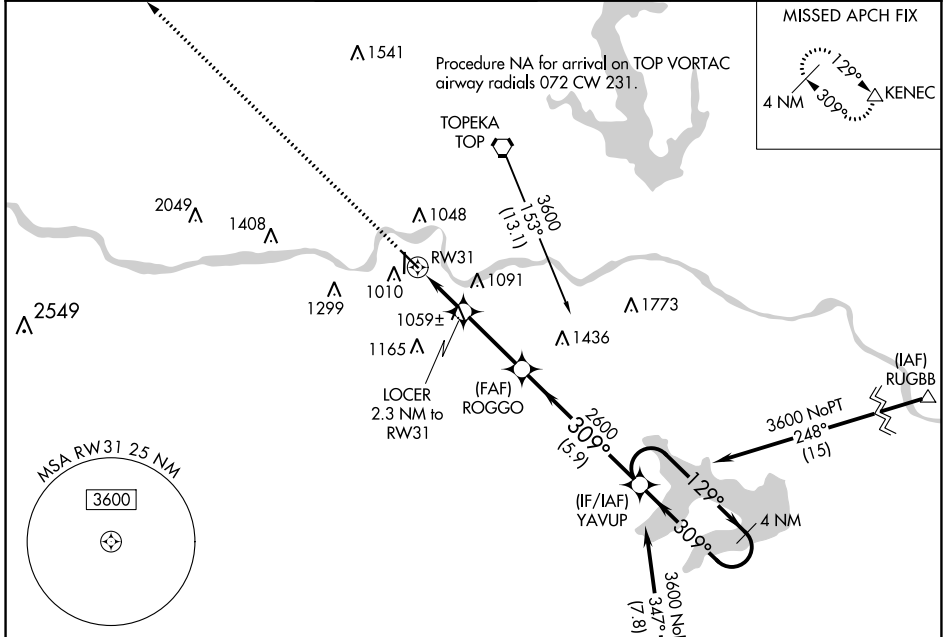
WAAS CH <b>69627</b> <b>W31A</b>	APP CRS <b>309°</b>	Rwy Idg TDZE Apt Elev	<b>5099</b> <b>880</b> <b>881</b>
--	------------------------	-----------------------------	---

# RNAV (GPS) RWY 31

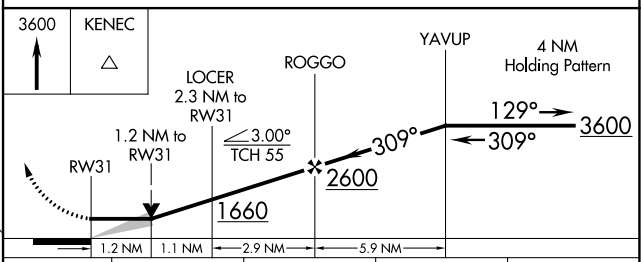
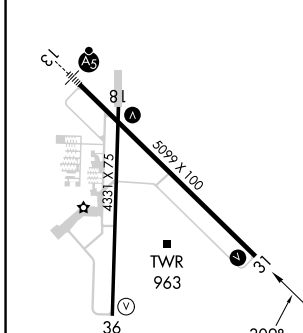
PHILIP BILLARD MUNI (TOP)

DME/DME RNP-0.3 NA.		MISSED APPROACH: Climb to 3600 direct KENEC and hold.			
---------------------	--	---	--	--	--

ASOS <b>121.275</b>	KANSAS CITY CENTER <b>123.8 343.7</b>	TOPEKA TOWER ★ <b>118.7 (CTAF) 0 257.8</b>	GND CON <b>121.9</b>	CLNC DEL <b>121.9</b>	UNICOM <b>122.95</b>
------------------------	--	---	-------------------------	--------------------------	-------------------------



ELEV 881	TDZE 880
----------	----------



CATEGORY	A	B	C	D
LP MDA	1320-1	440 (500-1)	1320-1 <sup>3</sup> / <sub>8</sub> 440 (500-1 <sup>3</sup> / <sub>8</sub> )	NA
LNAV MDA	1340-1	460 (500-1)	1340-1 <sup>3</sup> / <sub>8</sub> 460 (500-1 <sup>3</sup> / <sub>8</sub> )	NA
<input checked="" type="checkbox"/> CIRCLING	1360-1 479 (500-1)	1440-1 559 (600-1)	1600-2 719 (800-2)	NA

TOPEKA, KANSAS  
Amdt 1B 29MAR18

39°04'N-95°37'W

# PHILIP BILLARD MUNI (TOP) RNAV (GPS) RWY 31

NC-2, 28 NOV 2024 to 26 DEC 2024

NC-2, 28 NOV 2024 to 26 DEC 2024