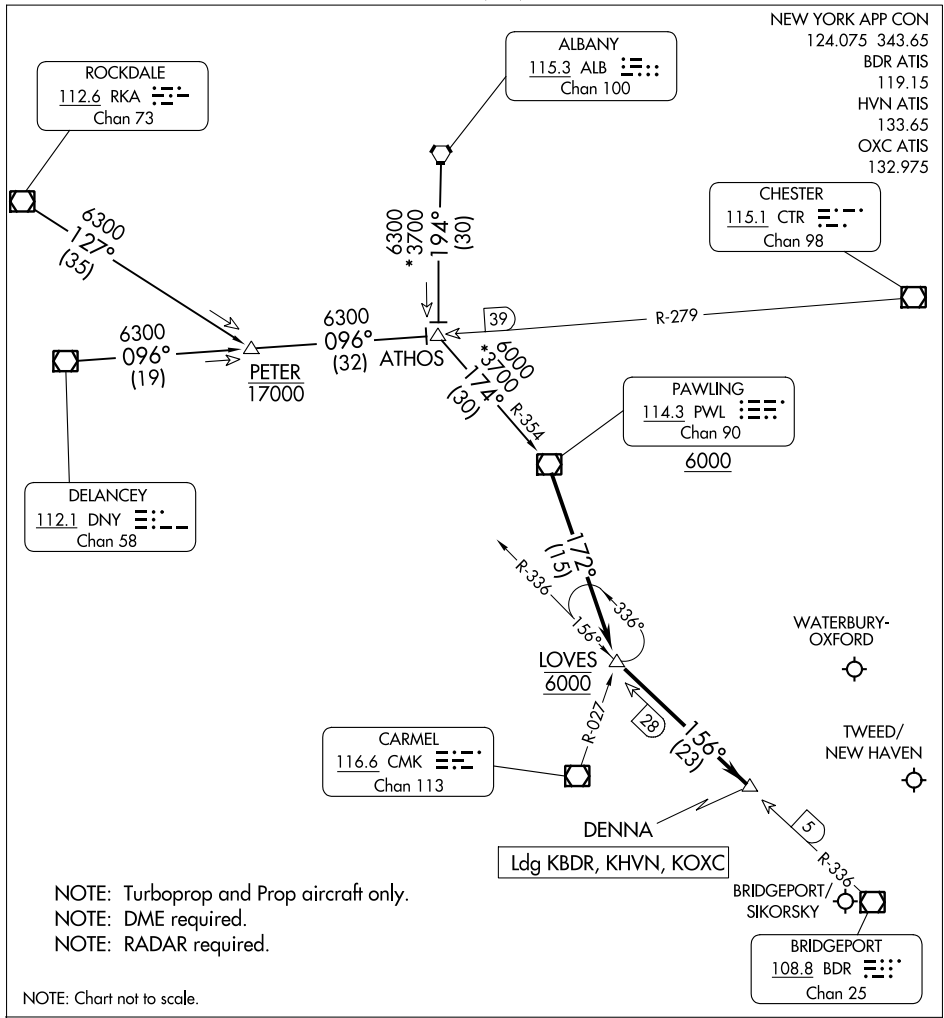


# DENNA THREE ARRIVAL

AL-621 (FAA)

BRIDGEPORT, CONNECTICUT



NEW YORK APP CON  
124.075 343.65  
BDR ATIS  
119.15  
HVN ATIS  
133.65  
OXC ATIS  
132.975

CHESTER  
115.1 CTR  
Chan 98

ROCKDALE  
112.6 RKA  
Chan 73

ALBANY  
115.3 ALB  
Chan 100

PAWLING  
114.3 PWL  
Chan 90  
6000

DELANCEY  
112.1 DNY  
Chan 58

CARMEL  
116.6 CMK  
Chan 113

BRIDGEPORT  
108.8 BDR  
Chan 25

Ldg KBDR, KHVN, KOXC

- NOTE: Turboprop and Prop aircraft only.
- NOTE: DME required.
- NOTE: RADAR required.

NOTE: Chart not to scale.

## ARRIVAL ROUTE DESCRIPTION

ALBANY TRANSITION (ALB.DENNA3): From over ALB VORTAC on ALB R-194 to ATHOS, then on PWL R-354 to PWL VOR/DME, thence....

DELANCEY TRANSITION (DNY.DENNA3): From over DNY VOR/DME on DNY R-096 to ATHOS, then on PWL R-354 to PWL VOR/DME, thence....

ROCKDALE TRANSITION (RKA.DENNA3): From over RKA VOR/DME on RKA R-127 to PETER, then on DNY R-096 to ATHOS, then on PWL R-354 to PWL VOR/DME, thence....

....from PWL VOR/DME on PWL R-172 to cross LOVES at 6000, then on BRIDGEPORT (BDR) R-336 to DENNA. Expect RADAR vectors.