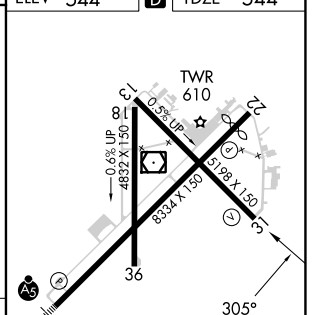
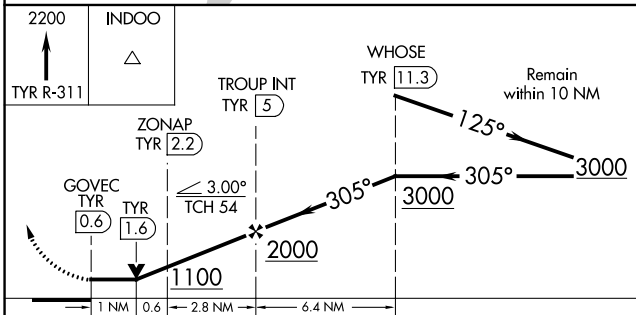
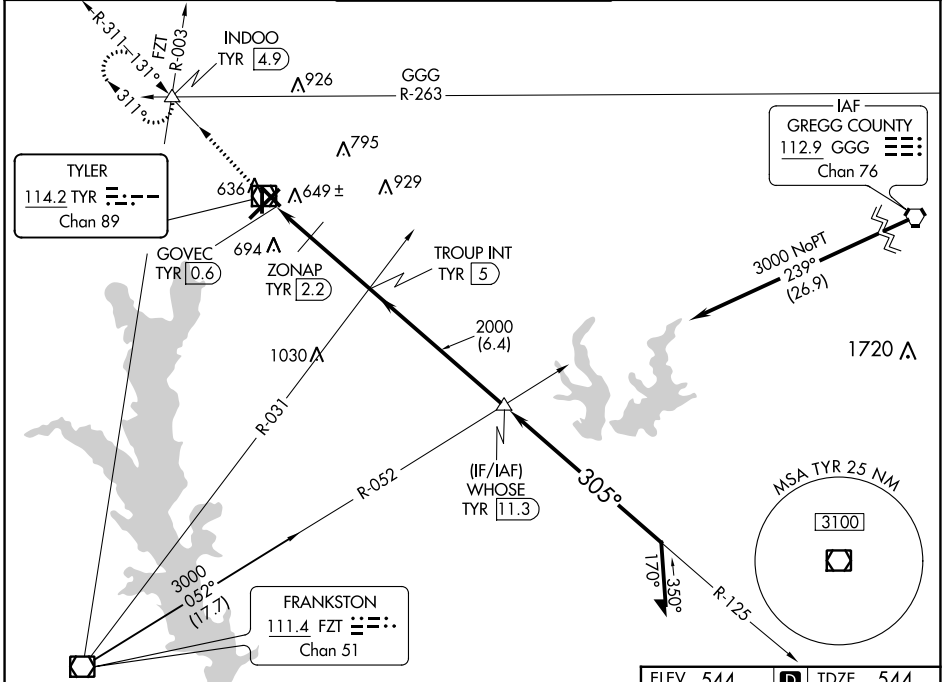


VOR/DME TYR 114.2 Chan 89	APP CRS 305°	Rwy Idg TDZE Apt Elev 5198 544 544
---	------------------------	--

VOR RWY 31

TYLER POUNDS RGNL (TYR)

<p>▼ Rwy 31 helicopter visibility reduction below 3/4 SM NA.</p> <p>▲ MISSED APPROACH: Climb to 2200 on TYR VOR/DME R-311 to INDOO INT/4.9 DME and hold.</p>	<table border="1"> <tr> <td>ATIS 126.25</td> <td>LONGVIEW APP CON* 128.75 379.15</td> <td>POUNDS TOWER* 120.1 (CTAF) 257.8</td> <td>GND CON 121.9</td> <td>UNICOM 122.95</td> </tr> </table>	ATIS 126.25	LONGVIEW APP CON* 128.75 379.15	POUNDS TOWER* 120.1 (CTAF) 257.8	GND CON 121.9	UNICOM 122.95
ATIS 126.25	LONGVIEW APP CON* 128.75 379.15	POUNDS TOWER* 120.1 (CTAF) 257.8	GND CON 121.9	UNICOM 122.95		



CATEGORY	A	B	C	D
S-31	1100-1	556 (600-1)	1100-1 1/2	556 (600-1 1/2)
C CIRCLING	1100-1	556 (600-1)	1160-1 1/4 616 (700-1 1/4)	1280-2 1/4 736 (800-2 1/4)
ZONAP FIX MINIMUMS (DME REQUIRED)				
S-31	920-1 376 (400-1)			
C CIRCLING	980-1 436 (500-1)	1020-1 476 (500-1)	1160-1 1/4 616 (700-1 1/4)	1280-2 1/4 736 (800-2 1/4)

ELEV 544	D TDZE 544
REIL Rwy 22 1	FAF to MAP 4.4 NM
MIRL Rwy 18-36 1	Knots: 60 90 120 150 180
HIRL Rwy 4-22 and 13-31 1	Min:Sec: 4:24 2:56 2:12 1:46 1:28

SC-2, 28 NOV 2024 to 26 DEC 2024

SC-2, 28 NOV 2024 to 26 DEC 2024