

APP CRS **219°**  
 Rwy Idg **4498**  
 TDZE **607**  
 Apt Elev **612**

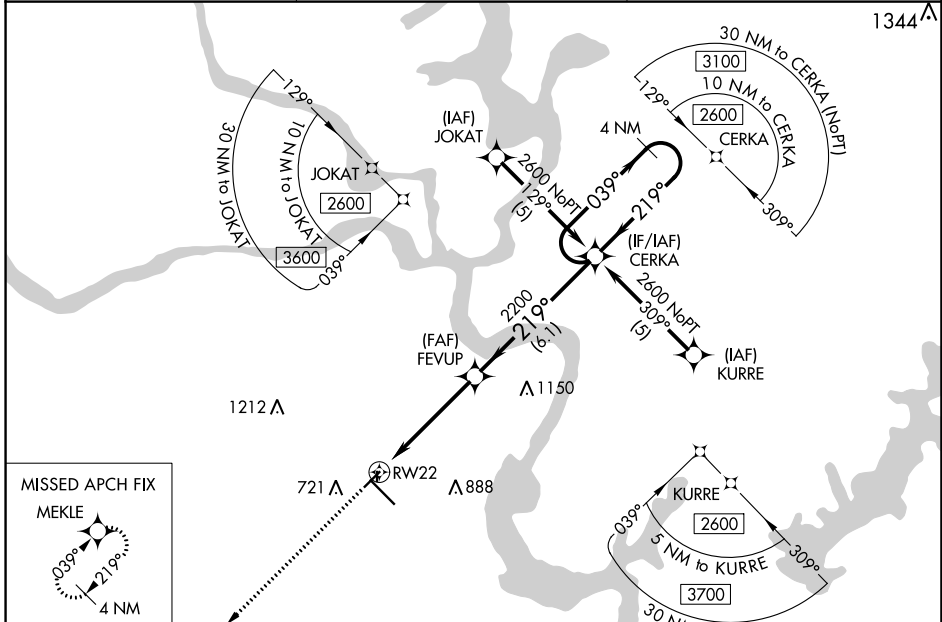
# RNAV (GPS) RWY 22

MUSKOGEE-DAVIS RGNL (MKO)

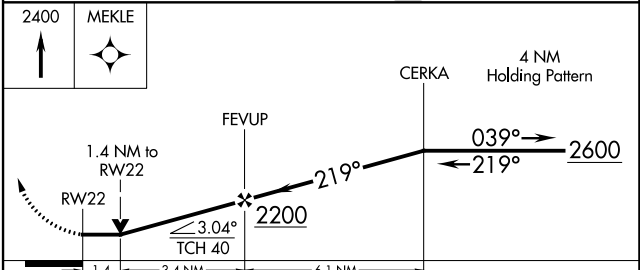
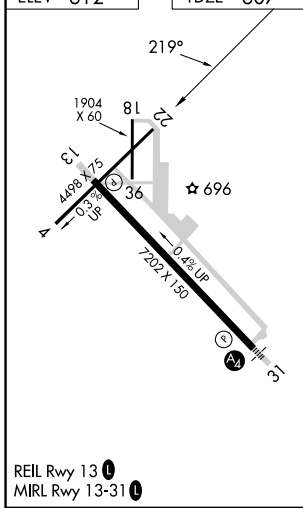
**⚠** DME/DME RNP-0.3 NA. When local altimeter setting not received, use Tahlequah altimeter setting: increase all MDA 100 feet and visibility LNAV and Circling Cat C  $\frac{1}{4}$  SM and LNAV and Circling Cat D  $\frac{1}{2}$  SM. VDP NA when using Tahlequah Muni altimeter setting. Straight-in Rwy 22 NA at night, Circling Rwy 4, 18, 22, 36 NA at night. Rwy 4, 18, 22, 36 helicopter visibility reduction below 1 SM NA.

**MISSED APPROACH:**  
 Climb to 2400 direct MEKLE and hold.

ASOS **135.025**      FORT WORTH CENTER **132.2 338.35**      UNICOM **122.8 (CTAF) 0**



ELEV **612**      TDZE **607**



CATEGORY	A	B	C	D
LNAV MDA	1100-1	493 (500-1)	1100-1½	493 (500-1½)
CIRCLING	1140-1 528 (600-1)	1180-1 568 (600-1)	1320-2 708 (800-2)	1400-2½ 788 (800-2½)

SC-1, 28 NOV 2024 to 26 DEC 2024

SC-1, 28 NOV 2024 to 26 DEC 2024