

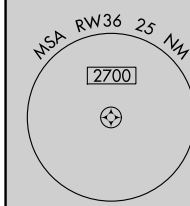
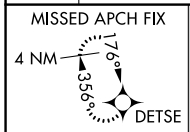
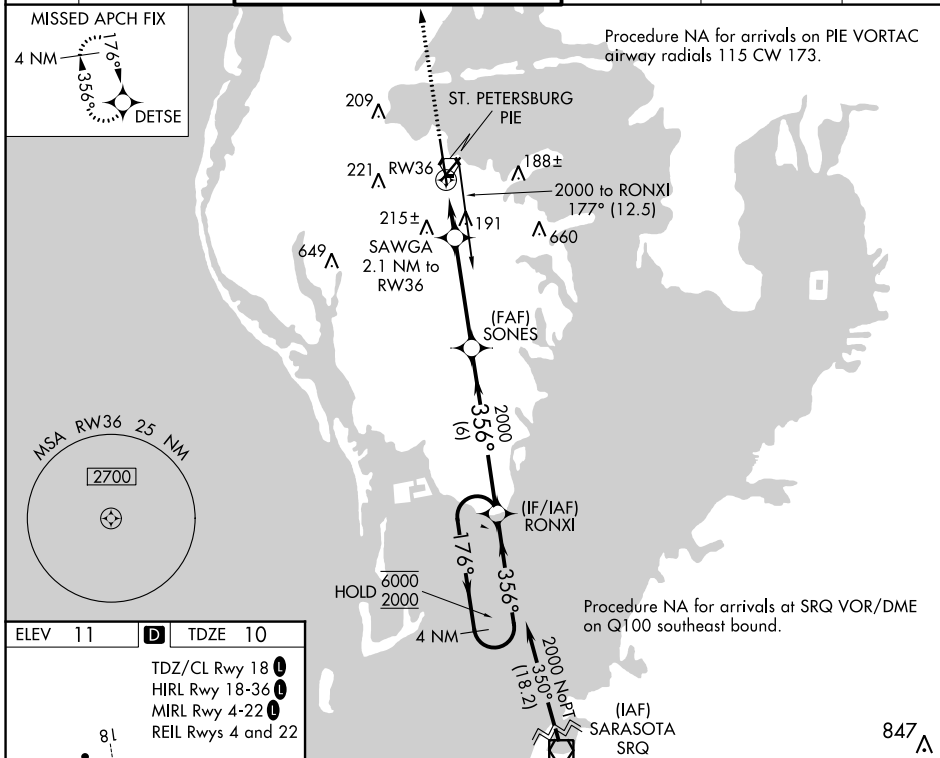
WAAS CH 65739 W36A	APP CRS 356°	Rwy Idg 8720 TDZE 10 Apt Elev 11
--	------------------------	---

RNAV (GPS) RWY 36

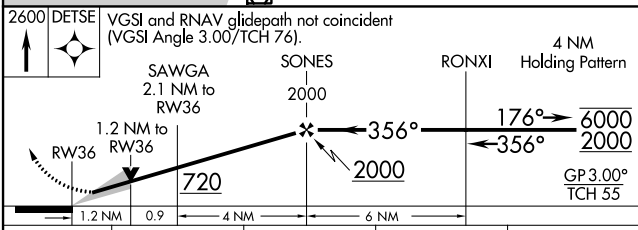
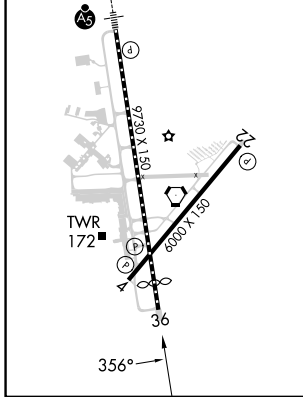
ST PETE-CLEARWATER INTL (PIE)

RNP APCH - GPS		<p>⚠ Circling to Rwy 22 NA at night. For uncompensated Baro-VNAV systems, LNAV/VNAV NA below 3°C or above 54°C.</p>				<p>MISSED APPROACH: Climb to 2600 direct DETSE and hold.</p>	
----------------	--	--	--	--	--	--	--

ATIS 134.5	TAMPA APP CON 125.3 316.05	ST PETERSBURG-CLEARWATER TOWER ★ 118.3 (CTAF) 0 257.8	GND CON 121.9 348.6	CLNC DEL 120.6 350.2	UNICOM 122.95
----------------------	--------------------------------------	---	-------------------------------	--------------------------------	-------------------------



ELEV 11	D TDZE 10
TDZ/CL Rwy 18 Ⓛ HIRL Rwy 18-36 Ⓛ MIRL Rwy 4-22 Ⓛ REIL Rwys 4 and 22	



CATEGORY	A	B	C	D
LPV DA	210/40 200 (200-¾)			
LNAV/VNAV DA	315/45 305 (400-⅔)			
LNAV MDA	460/55	450 (500-1)	460-1⅓	450 (500-1⅓)
C CIRCLING	520-1	509 (600-1)	600-1½ 589 (600-1½)	620-2 609 (700-2)

SE-3, 28 NOV 2024 to 26 DEC 2024

SE-3, 28 NOV 2024 to 26 DEC 2024