

VORTAC PIE 116.4 Chan 111	APP CRS 008°	Rwy Idg TDZE 10 Apt Elev 11	8720
---	------------------------	---	-------------

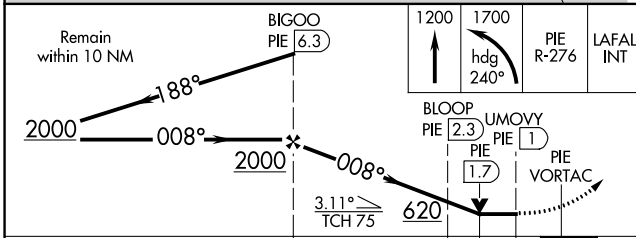
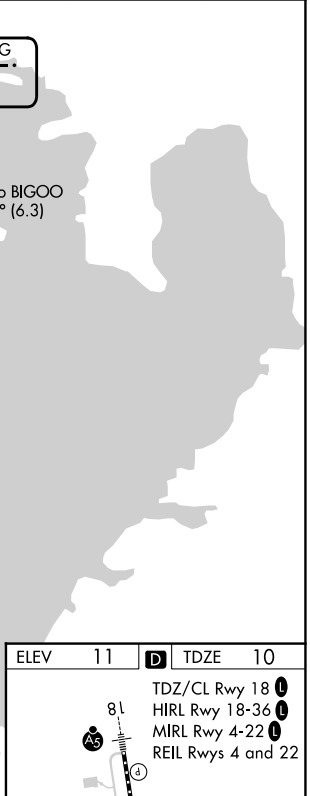
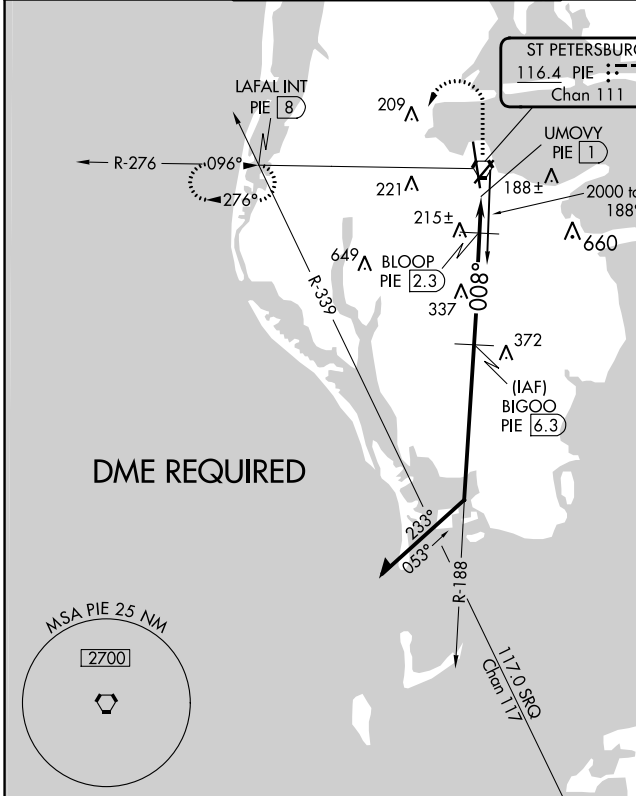
VOR RWY 36

ST PETE-CLEARWATER INTL (PIE)

▼ DME required. Helicopter visibility reduction below ¾ SM NA.

MISSED APPROACH: Climb to 1200 then climbing left turn to 1700 on heading 240° and PIE VORTAC R-276 to LAFAL INT/ PIE 8 DME and hold.

ATIS 134.5	TAMPA APP CON 125.3 316.05	ST PETERSBURG-CLEARWATER TOWER ★ 118.3 (CTAF) 0 257.8	GND CON 121.9 348.6	CLNC DEL 120.6 350.2	UNICOM 122.95
----------------------	--------------------------------------	---	-------------------------------	--------------------------------	-------------------------



ELEV 11	D	TDZE 10
TDZ/CL Rwy 18 1 HIRL Rwy 18-36 1 MIRL Rwy 4-22 1 REIL Rws 4 and 22		

CATEGORY	A	B	C	D
S-36	460-1 450 (500-1)		460-1¾ 450 (500-1½)	
CIRCLING	620-1 609 (700-1)		640-1¾ 629 (700-1¾)	680-2 669 (700-2)

SE-3, 28 NOV 2024 to 26 DEC 2024

SE-3, 28 NOV 2024 to 26 DEC 2024