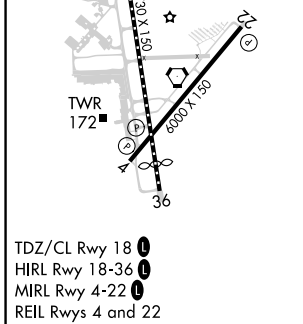
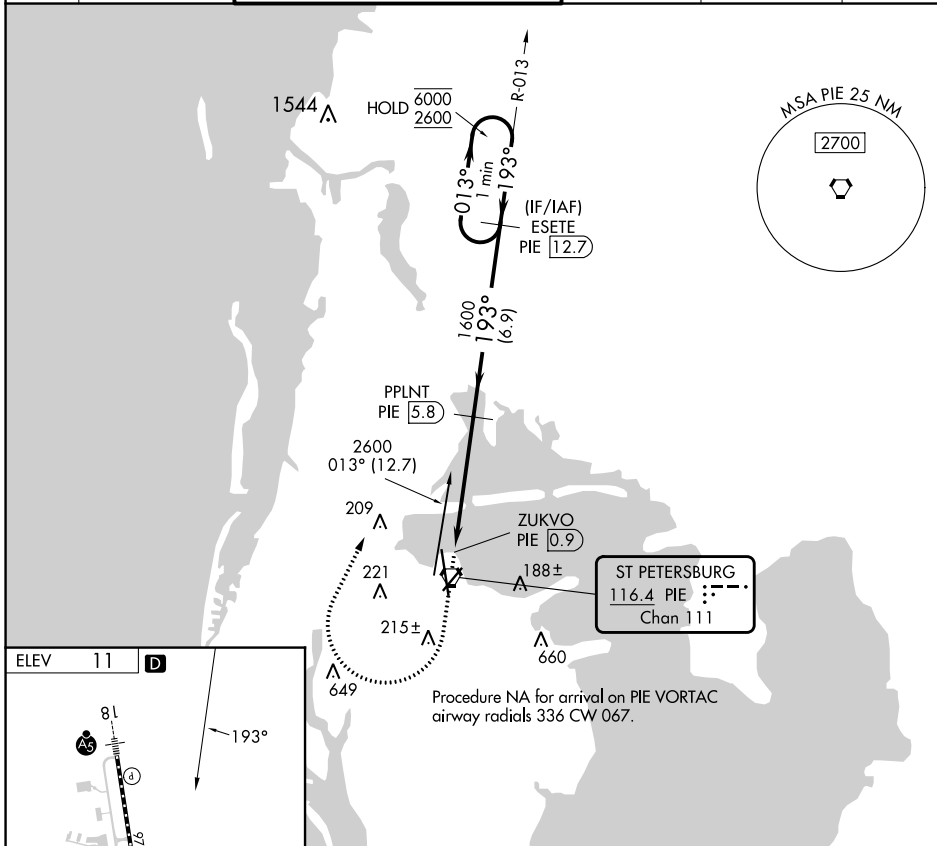


VORTAC PIE <b>116.4</b> Chan <b>111</b>	APP CRS <b>193°</b>	Rwy Idg TDZE Apt Elev	N/A N/A <b>11</b>
---	------------------------	-----------------------------	-------------------------

**VOR-B**

ST PETE-CLEARWATER INTL (PIE)

DME required.		MISSED APPROACH: Climb to 700 then climbing right turn to 2600 on heading 030° and PIE VORTAC R-013 to ESETE/PIE 12.7 DME and hold.			
ATIS <b>134.5</b>	TAMPA APP CON <b>125.3 316.05</b>	ST PETERSBURG-CLEARWATER TOWER ★ <b>118.3 (CTAF) 0 257.8</b>	GND CON <b>121.9 348.6</b>	CLNC DEL <b>120.6 350.2</b>	UNICOM <b>122.95</b>



ST PETERSBURG-CLEARWATER, FLORIDA  
Orig 28FEB19

700 ↑ hdg 030° R-013 PIE ESETE PIE 12.7 PPLNT PIE 5.8 ZUKVO PIE 0.9 PIE VORTAC 6000 2600 193° 013° 4.9 NM 6.9 NM	ESETE PIE 12.7 One Minute Holding Pattern			
	013° → 6000 ← 193° 2600			
CATEGORY CIRCLING	A	B	C	D
	520-1	509 (600-1)	600-1½ 589 (600-1½)	620-2 609 (700-2)

27°55'N-82°41'W

ST PETE-CLEARWATER INTL (PIE)  
**VOR-B**

SE-3, 28 NOV 2024 to 26 DEC 2024

SE-3, 28 NOV 2024 to 26 DEC 2024