

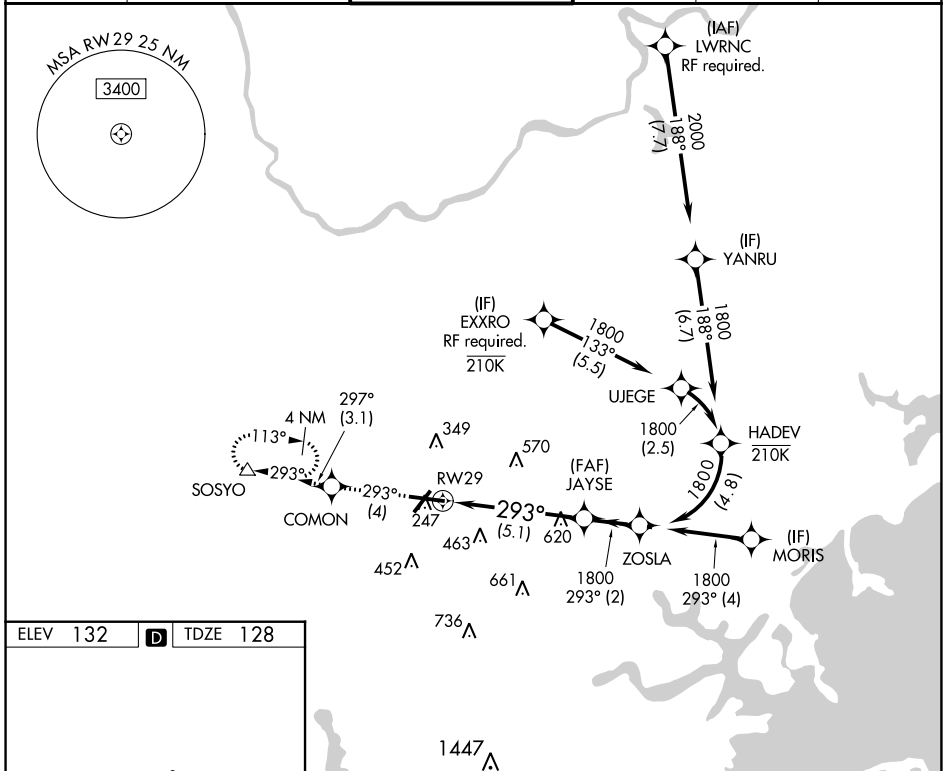
APP CRS <b>293°</b>	Rwy Idg <b>7011</b>
	TDZE <b>128</b>
	Apt Elev <b>132</b>

# RNAV (RNP) Y RWY 29

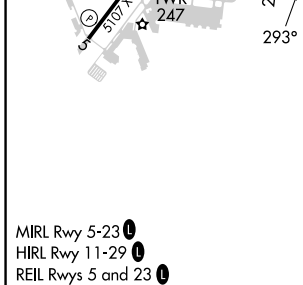
LAURENCE G HANSCOM FLD (BED)

RNP AR APCH.		MALSR	MISSED APPROACH: Climb to 2000 on track 293° to COMON then on track 297° to SOSYO and hold.		
For uncompensated Baro-VNAV systems, procedure NA below -19°C or above 54°C.					

ATIS <b>124.6</b>	BOSTON APP CON <b>124.4 279.6</b>	HANSCOM TOWER* <b>118.5 (CTAF) 0 257.2</b>	GND CON <b>121.7</b>	CLNC DEL <b>121.85</b>	UNICOM <b>122.95</b>
----------------------	--------------------------------------	---	-------------------------	---------------------------	-------------------------



ELEV 132	<b>D</b>	TDZE 128
----------	----------	----------



2000	↑	fr 293°	COMON	↑	fr 297°	SOSYO	See planview for multiple IF locations.
							JAYSE ZOSLA
							1800
							293°
							1800
							GP 3.00° TCH 55
							5.1 NM 2 NM
CATEGORY		A	B	C	D		
RNP 0.30 DA		651-1		523 (600-1)			
<b>AUTHORIZATION REQUIRED</b>							

NE-1, 28 NOV 2024 to 26 DEC 2024

NE-1, 28 NOV 2024 to 26 DEC 2024