


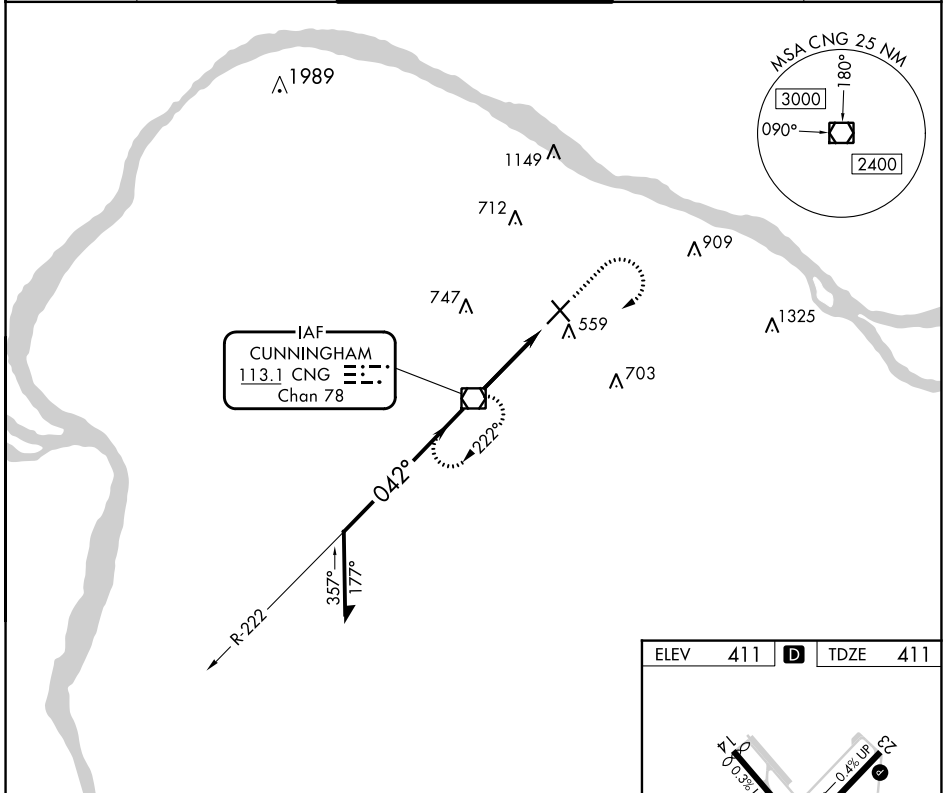
VOR/DME CNG 113.1 Chan 78	APP CRS 042°	Rwy Idg 6500 TDZE 411 Apt Elev 411
---	------------------------	---

VOR RWY 5

BARKLEY RGNL (PAH)

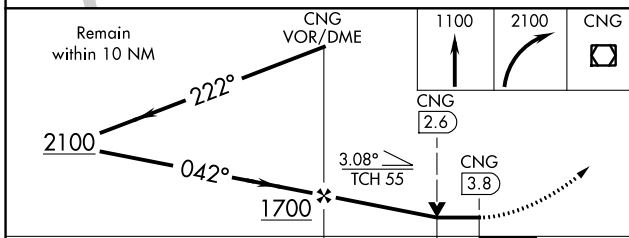
<p>⚠ When local altimeter setting not received, use Mayfield altimeter setting and increase all MDAs 80 feet, and increase S-5 Cat C and D visibility ¼ SM and increase Circling Cat D visibility ¼ SM. VDP NA when using Mayfield altimeter setting.</p>	<p>MALSR </p>	<p>MISSED APPROACH: Climb to 1100 then climbing right turn to 2100 direct CNG VOR/DME and hold.</p>
--	--	---

ASOS 118.375	MEMPHIS CENTER 133.65 292.15	PADUCAH TOWER ★ 119.6 (CTAF) 306.9	GND CON 121.7 306.9	UNICOM 122.95
------------------------	--	--	-------------------------------	-------------------------



SE-1, 28 NOV 2024 to 26 DEC 2024

SE-1, 28 NOV 2024 to 26 DEC 2024



ELEV 411	D	TDZE 411
----------	----------	----------

HIRL Rwy 5-23 **Ⓛ**
MIRL Rwy 14-32 **Ⓛ**
REIL Rwy 23 and 32 **Ⓛ**

FAF to MAP 3.8 NM

Knots	60	90	120	150	180
Min:Sec	3:48	2:32	1:54	1:31	1:16

CATEGORY	A	B	C	D
S-5	860-½ 449 (500-½)		860-¾ 449 (500-¾)	860-1 449 (500-1)
C CIRCLING	900-1 489 (500-1)		920-1½ 509 (600-1½)	1100-2¼ 689 (700-2¼)