

HI-TACAN Y RWY 22

VORTAC HRV 114.1 Chan 88	APCH CRS 237°	Rwy ldg TDZE Arprt Elev 10,000 -1 2
----------------------------------------------	-------------------------	-------------------------------------------------------------------------

AL-630 [USN]

NEW ORLEANS NAS JRB (ALVIN CALLENDER FLD) (KNBG)

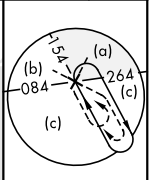
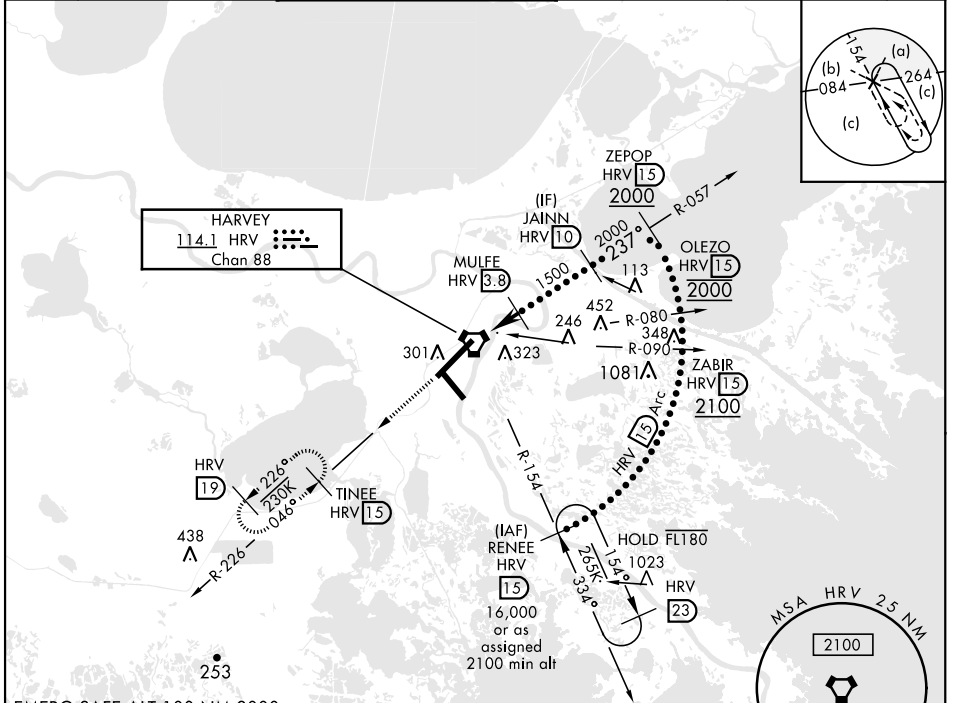
RNAV or ATC RADAR monitoring required.

ALSF-1

MISSED APPROACH: Climb to 2000 via R-226 to TINEE and hold.

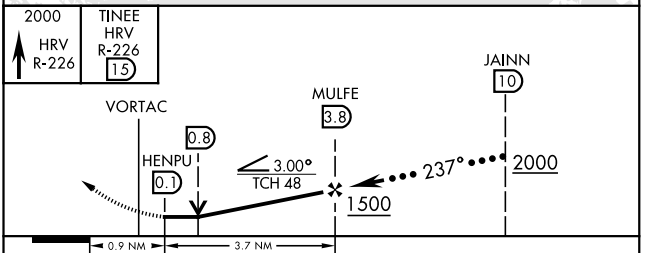
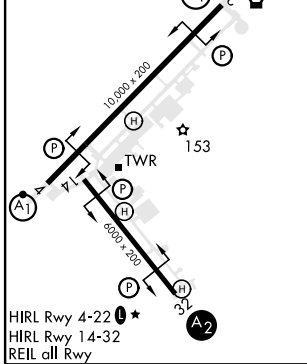
* When ALS inop, increase vis CAT CDE vis to 1½ miles.
** Circling NA for CAT E NW of Rwy 4-22.

ATIS ★ 279.55	APP CON 123.85 256.9	NAVY NEW ORLEANS TOWER ★ 123.8 340.2 (CTAF)	GND CON 121.6 270.35	CLNC DEL 128.35 263.0	ASR/ PAR
-------------------------	--------------------------------	-------------------------------------------------------	--------------------------------	---------------------------------	----------



EMERG SAFE ALT 100 NM 3000

ELEV 2	TDZE -1
--------	---------



CATEGORY	C	D	E
S-22 *	540-1	540 (600-1)	
CIRCLING **	640-1¼ 638 (700-1¾)	640-2 638 (700-2)	640-2¼ 638 (700-2¼)

HI-TACAN Y RWY 22

SC-4, 28 NOV 2024 to 26 DEC 2024

SC-4, 28 NOV 2024 to 26 DEC 2024