

NEW ORLEANS, LOUISIANA

RNAV (GPS) RWY 14

AL-630 (USN)

NEW ORLEANS NAS JRB (ALVIN CALLENDER FLD) (KNBG)

APCH CRS	Rwy Idg	6000
140°	TDZE	2
	Arprt Elev	2

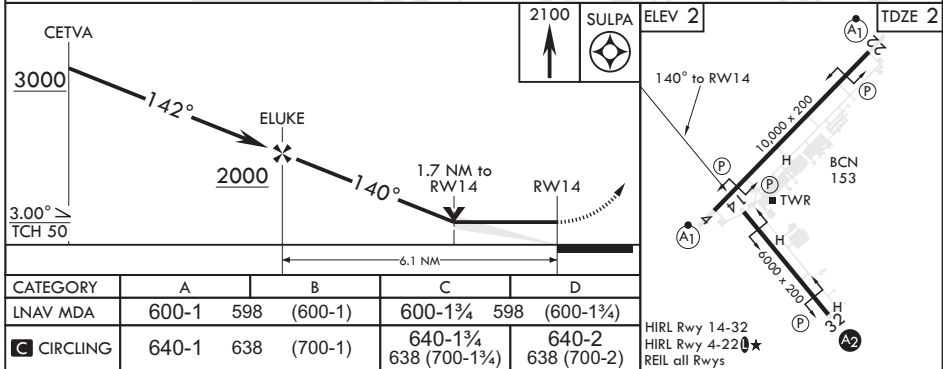
MISSED APPROACH: Climbing right turn to 2100 direct SULPA and hold.

ATIS★	APP CON/DEP CON	NAVY NEW ORLEANS TOWER★	GND CON	CLNC DEL	ASR/PAR
279.55	123.85 256.9	123.8 0★ 340.2 (CTAF)	121.6 270.35	128.35 263.0	



SC-4, 28 NOV 2024 to 26 DEC 2024

SC-4, 28 NOV 2024 to 26 DEC 2024



NEW ORLEANS, LOUISIANA

29°50'N - 90°02'W NEW ORLEANS NAS JRB (ALVIN CALLENDER FLD) (KNBG)

Amdt 2 04NOV21

RNAV (GPS) RWY 14