

NEW ORLEANS, LOUISIANA

# RNAV (GPS) RWY 32

AL-630 (USN)

NEW ORLEANS NAS JRB (ALVIN CALLENDER FLD) (KNBG)

|          |            |      |
|----------|------------|------|
| APCH CRS | Rwy Idg    | 6000 |
| 321°     | TDZE       | 2    |
|          | Arprt Elev | 2    |

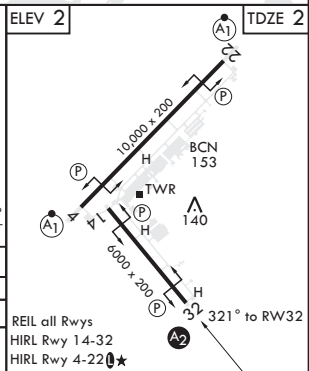
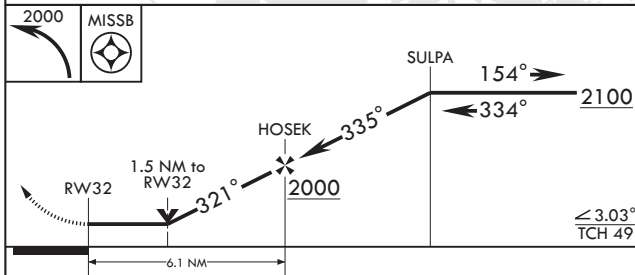
|  |      |   |
|--|------|---|
| RNP APCH.  | SALS | MISSED APPROACH: Climbing left turn to 2000 direct MIS SB and hold. |
| RADAR required.  | A2   |   |
| * When ALS inop, increase CAT AB vis to 1 mile; CAT CD vis to 1 3/8 miles. |      |   |

|        |                 |                         |              |              |         |
|--------|-----------------|-------------------------|--------------|--------------|---------|
| ATIS*  | APP CON/DEP CON | NAVY NEW ORLEANS TOWER* | GND CON      | CLNC DEL     | ASR/PAR |
| 279.55 | 123.85 256.9    | 123.8 (0) 340.2 (CTAF)  | 121.6 270.35 | 128.35 263.0 |         |

LNAV visibility reduction by helicopters NA.



EMERG SAFE ALT 100 NM 3000



| CATEGORY   | A       | B             | C             | D             |
|------------|---------|---------------|---------------|---------------|
| LNAV MDA*  | 520-3/4 | 518 (600-3/4) | 520-1 1/4     | 518 (600-1/4) |
| ☐ CIRCLING | 640-1   | 638 (700-1)   | 640-1 1/4     | 640-2         |
|            |         |               | 638 (700-1/4) | 638 (700-2)   |

REIL all Rwys  
HIRL Rwy 14-32  
HIRL Rwy 4-22 (0)

NEW ORLEANS, LOUISIANA

29°50'N - 90°02'W NEW ORLEANS NAS JRB (ALVIN CALLENDER FLD) (KNBG)

Amdt 4 19MAY22

# RNAV (GPS) RWY 32

SC-4, 28 NOV 2024 to 26 DEC 2024

SC-4, 28 NOV 2024 to 26 DEC 2024