

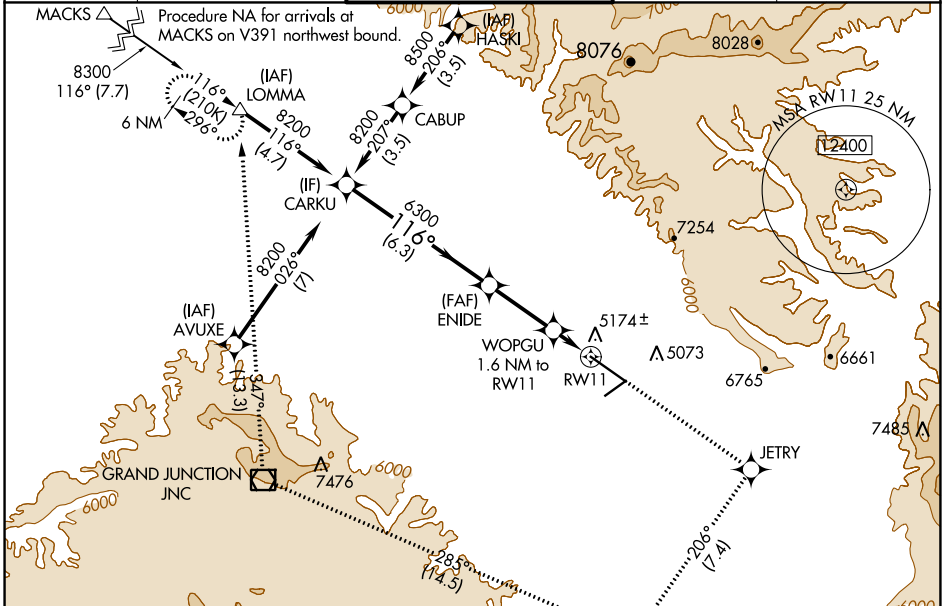
WAAS CH <b>97514</b> <b>W11A</b>	APP CRS <b>116°</b>	Rwy Idg TDZE Apt Elev	<b>9339</b> <b>4840</b> <b>4861</b>
--	------------------------	-----------------------------	---

# RNAV (GPS) Y RWY 11

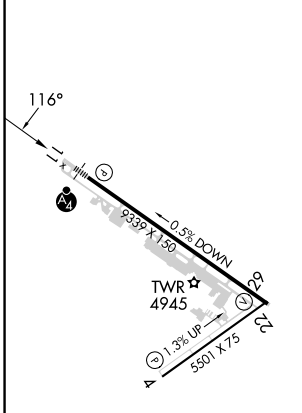
GRAND JUNCTION RGNL (GJT)

RNP APCH - GPS.	MALSF	MISSED APPROACH: Climb to 6700 direct JETRY then climbing right turn to 9000 on track 206° to AYEDY and track 285° to JNC VOR/DME and track 347° to LOMMA and hold. *Missed approach requires minimum climb of 206 feet per NM to 7740.
⚠ Circling NA for Cat D north of Rwy 11-29. For uncompensated Baro-VNAV systems, LNAV/VNAV NA below -17°C or above 54°C. For inop ALS, increase LPV all Cats visibility to RVR 4500 and increase LNAV Cat C/D visibility to 1 1/2. Inop table does not apply to LPV*.		

ATIS <b>118.55</b>	DENVER APP CON * <b>119.7 317.4</b>	GRAND JUNCTION TOWER * <b>118.1 (CTAF) 257.8</b>	GND CON <b>121.7 257.8</b>	UNICOM <b>122.95</b>
-----------------------	--	---	-------------------------------	-------------------------

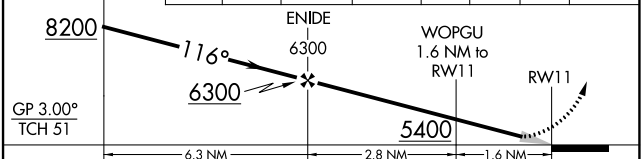


ELEV 4861	<b>D</b>	TDZE 4840
-----------	----------	-----------



HIRL Rwy 11-29  
MIRL Rwy 4-22  
REIL Rwy 4, 22 and 29

CARKU	6700	JETRY	9000	AYEDY	JNC	LOMMA
↑	◆	↷ tr 206°	△	tr 285°	tr 347°	△



CATEGORY	A	B	C	D
LPV DA*		5040/40	200 (200-3/4)	
LPV DA		5120/40	280 (300-3/4)	
LNAV/VNAV DA		5317/60	477 (500-1 1/4)	
LNAV MDA*	5280/40	440 (500-3/4)	5280/50	440 (500-1)
LNAV MDA	5360/40	520 (500-3/4)	5360-1 1/4	520 (500-1 1/4)
CIRCLING	5380-1 519 (600-1)	5520-1 659 (700-1)	5840-3	979 (1000-3)

SW-1, 28 NOV 2024 to 26 DEC 2024

SW-1, 28 NOV 2024 to 26 DEC 2024