

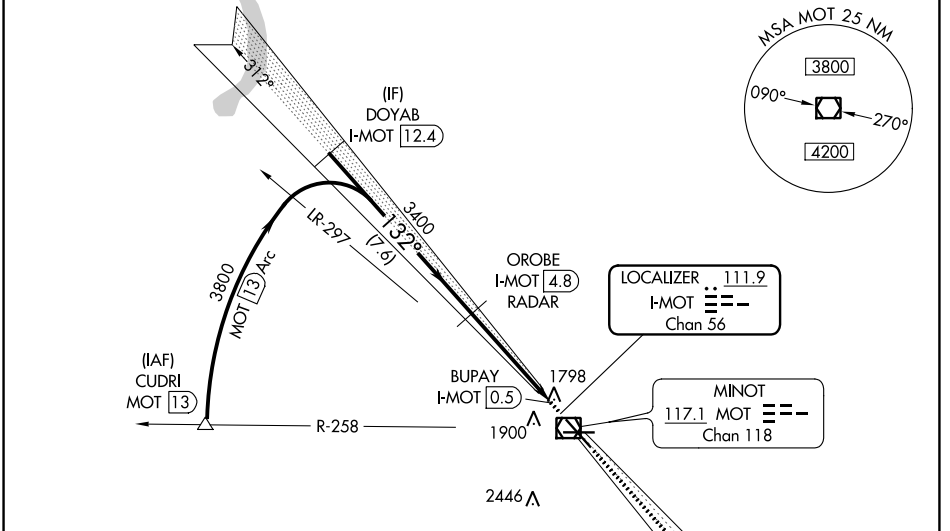
LOC/DME I-MOT 111.9 Chan 56	APP CRS 132°	Rwy Idg 7700 TDZE 1702 Apt Elev 1716
---	------------------------	---

LOC BC RWY 13

MINOT INTL (MOT)

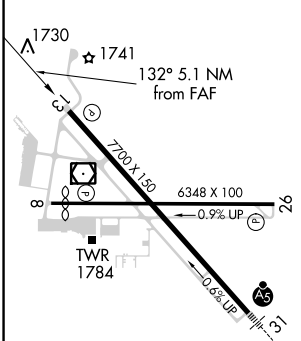
DME required		MISSED APPROACH: Climb to 3700 on I-MOT SE course to HEKTA/I-MOT 13.6 DME/RADAR and hold.		
--------------	--	--	--	--

ASOS 118.725	MINOT APP CON ★ 119.6 363.8	MAGIC CITY TOWER ★ 118.2 (CTAF) 0 251.125	GND CON 121.9	UNICOM 122.95
------------------------	---------------------------------------	---	-------------------------	-------------------------

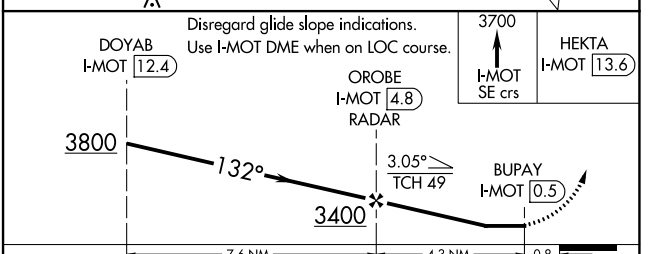


BACK COURSE

ELEV 1716	D	TDZE 1702
-----------	----------	-----------



REIL Rwy 13
REIL Rws 8 and 26
HIRL Rws 8-26 and 13-31



CATEGORY	A	B	C	D
S-LOC13	2060-1		358 (400-1)	
CIRCLING	2200-1 484 (500-1)	2240-1 524 (600-1)	2800-3 1084 (1100-3)	

NC-1, 28 NOV 2024 to 26 DEC 2024

NC-1, 28 NOV 2024 to 26 DEC 2024