

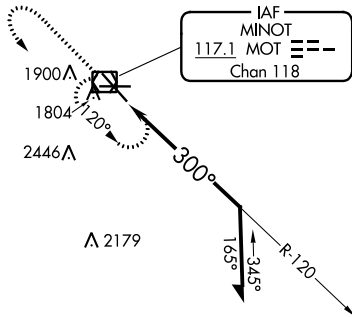
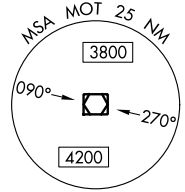
VOR/DME MOT <b>117.1</b> Chan <b>118</b>	APP CRS <b>300°</b>	Rwy Idg TDZE <b>1700</b> Apt Elev <b>1716</b>
--	------------------------	---

# VOR RWY 31

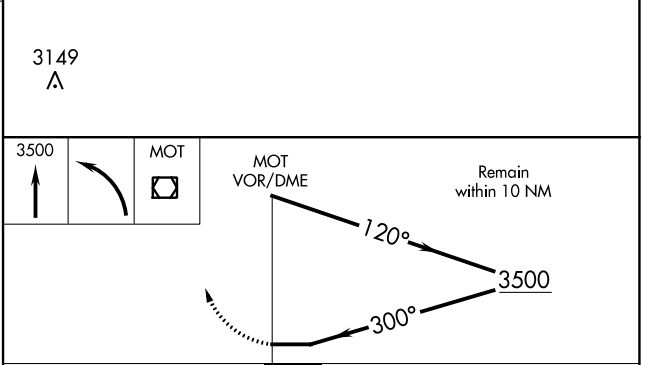
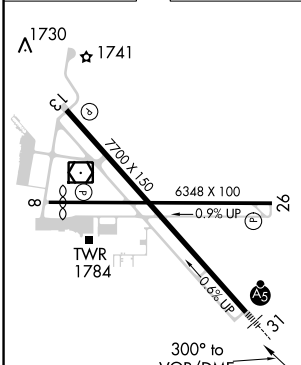
MINOT INTL (MOT)

		MISSED APPROACH: Climb to 3500 then left turn direct MOT VOR/DME and hold.

ASOS <b>118.725</b>	MINOT APP CON * <b>119.6 363.8</b>	MAGIC CITY TOWER * <b>118.2 (CTAF) 251.125</b>	GND CON <b>121.9</b>	UNICOM <b>122.95</b>
------------------------	---------------------------------------	---	-------------------------	-------------------------



ELEV 1716	<b>D</b>	TDZE 1679
-----------	----------	-----------



CATEGORY	A	B	C	D
S-31	2200/24	521 (500-½)	2200/55 521 (500-1)	2200/60 521 (500-1¼)
CIRCLING	2200-1 484 (500-1)	2240-1 524 (600-1)	2800-3 1084 (1100-3)	

REIL Rwy 13  
REIL Rwy 8 and 26  
HIRL Rwy 8-26 and 13-31

NC-1, 28 NOV 2024 to 26 DEC 2024

NC-1, 28 NOV 2024 to 26 DEC 2024