

WAAS CH <b>53732</b> <b>W35A</b>	APP CRS <b>349°</b>	Rwy Idg TDZE Apt Elev	<b>4808</b> <b>39</b> <b>40</b>
--	------------------------	-----------------------------	---------------------------------------

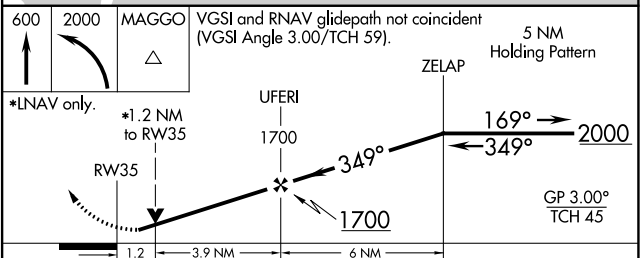
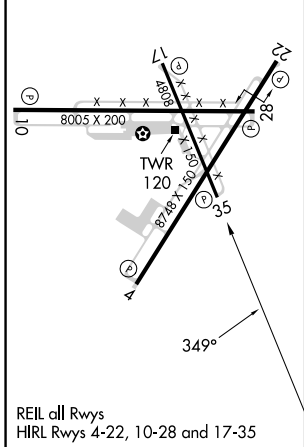
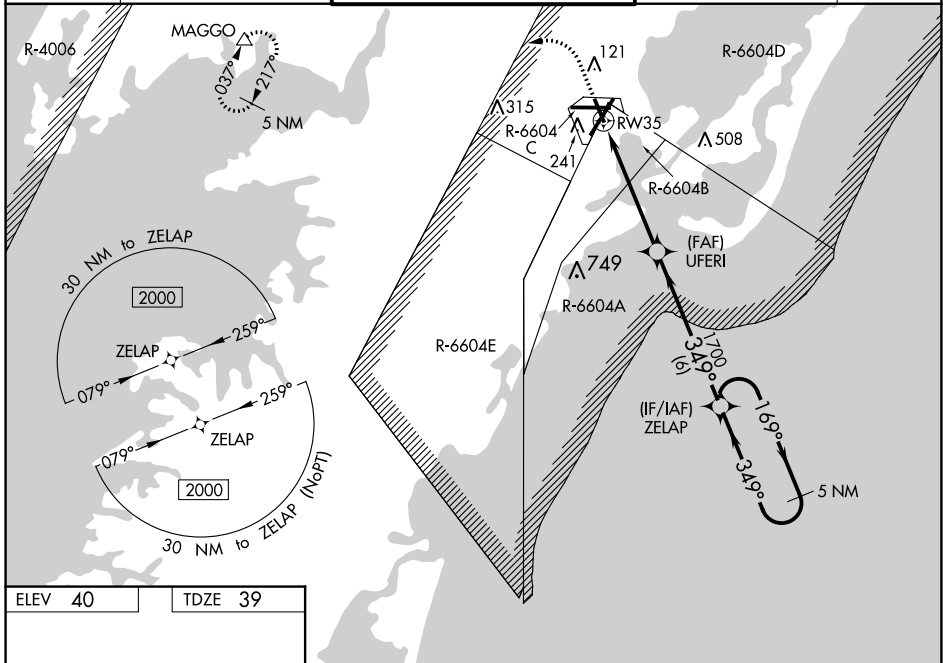
# RNAV (GPS) RWY 35

WALLOPS FLIGHT FACILITY (WAL)

**⚠** For uncompensated Baro-VNAV systems, LNAV/VNAV NA below -11°C (13°F) or above 54°C (130°F). DME/DME RNP-0.3 NA. When local altimeter setting not received, use Salisbury altimeter setting: increase LPV DA to 343; increase LNAV/VNAV DA to 464 and all Cats visibility ¼ mile; increase all MDA 60 feet and LNAV Cats C/D visibility ½ mile and Circling Cat C visibility ¼ mile. Baro-VNAV and VDP NA when using Salisbury altimeter setting. Helicopter visibility reduction below ¾ SM NA. Procedure NA when R-6604 active.

**MISSED APPROACH:** Climb to 600 then climbing left turn to 2000 direct MAGGO and hold.

ASOS <b>119.175</b>	PATUXENT APP CON ★ <b>127.95 314.0</b>	WALLOPS TOWER ★ <b>126.5 (CTAF) 0 306.975 (CTAF) 0</b>	GND CON <b>127.875 269.325</b>	CLNC DEL <b>121.7</b>
------------------------	---	---	-----------------------------------	--------------------------



CATEGORY	A	B	C	D
LPV DA		289-1	250 (300-1)	
LNAV/VNAV DA		410-1¼	371 (400-1¼)	
LNAV MDA	460-1	421 (500-1)	460-1¼	421 (500-1¼)
<b>CIRCLING</b>	600-1	560 (600-1)	620-1½ 580 (600-1½)	860-2¾ 820 (900-2¾)

NE-3, 28 NOV 2024 to 26 DEC 2024

NE-3, 28 NOV 2024 to 26 DEC 2024